



10486

MCM70

T-Mech Cement Mixer

T-MECH

Try **Monster** - Buy **Monster** - Be **Monster**

Specification

Product Description

The T-Mech Cement Mixer can be used to mix concrete, cement and mortar quickly and easily. With a large capacity of 70 litres you can mix concrete for different sized projects and the two wheels allow you to simply move the machine to suit your needs.

The rotary handle allows the drum to be positioned at many angles for adding materials to the mixer and tipping concrete out after mixing. As a portable mixer it should be used for jobs such as domestic repairs, residential renovations and hobbyist projects.

Please note: this mixer is not suitable for industrial use or for operation on a construction site, at 240V this mixer should be powered by mains electricity with the 13A 3 pin UK plug.

Technical Information

Voltage: 240V/50Hz

Power: 250W

Weight: 30kg

Plug: 13A 3 pin UK plug

Product Specifics

Dimensions: 100cm W, 97cm H & 55cm D

Capacity: 70 litres

Monster Guarantee

If you wish to return a product in perfect working order, we provide a 30 day returns policy as long as the item is unopened and in a resalable condition.

A 12 month warranty applies to all of our electrical products; we will cover the cost of labour and parts. Our policy is to try and repair the item before arranging an exchange or refund.

If for any reason a part is missing please get in touch with us within 7 days on receipt of your order. You can contact our friendly and helpful Customer Support Team via email or call. For full terms and conditions contact our Support Department via the details on the Contact Us page.

Specification

Product Features

- 1) Front Support
- 2) Rotary Handle
- 3) Mixing Drum
- 4) Power Switches
- 5) Wheels



A number of bolts, nuts, screws and washers are included to assemble the cement mixer:

Bag 1- 1 x small metal plate (17mm)

Bag 2- 2 x M8x20 Bolt, 2 x 8mm Washer, 2 x 8mm-300HV Washer, 2 x M8 Nuts

Bag 3- 6 x M8x55 Bolt, 6 x 8mm-300HV Washer, 6 x M8 Nuts

Bag 4- 1 x M10 x70 Bolt, 2 x 10mm-300HV Washer, 2 x M10 Nut, 2 x M8x25 Bolt, 2 x 8mm-300HV Washer, 2 x M8 Nut, 1 x Spring, 1 x Washer

Bag 5- 8 x M6x16 Bolt, 2 x 6mm-300HV Washer, 8 x M6 Nut, 6 x Spring Washer

Bag 6- 2 x M6x50 Bolt, 2 x M8x25 Bolt, 4 x 8mm-300HV Washer

Bag 7- 4 x Washer, 2 x 5x45 Pin

User Guide

Assembly Instructions

Thank you for purchasing this cement mixer from Monster Group.

Please follow these simple instructions for assembling it.

If you have any issues don't hesitate to contact our Support team on 01347 878887 who will be happy to guide you through the assembly.

The stand and drum can be assembled separately then fitted together. These instructions will start with the drum assembly first.

Step 1:

Take the bottom half of the drum, both paddles and bag 2 of your nuts and bolts. Place the longest side of the paddle into the drum and loosely secure to one of the holes in the base of the drum. Repeat with the other paddle. Both paddles should now be secured to the drum. Do not fully tighten these into place as they may need to move later in assembly.

Step 2:

Take the top half of the drum and lay it face down. Lay the circular black seal on the outside of the drum aligning each hole with the holes on the drum. Thread 8 bolts and spring washers from bag 5 from underneath the drum through the corresponding holes on the belt.

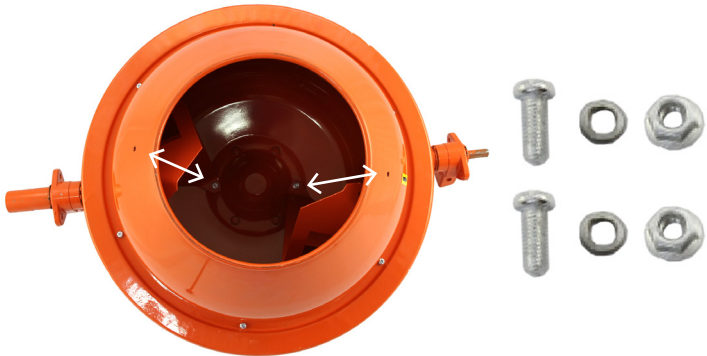
Step 3:

Both halves of the drum can now be connected. Turn the base of the drum upside down and slot on top of the other half of the drum. With the screws threaded through the screw holes and connecting the two halves, you can now attach the nuts from bag 5 and tighten them to secure the drum as one unit.

When turning the drum upright, ensure the two holes on the outside of the top half of the drum align with the two screws holding the paddles in place, as shown on the opposite page.

Step 4:

The mixing paddles still remain loosely attached inside the drum. Stand the drum upright. Reach inside to align each paddle with the holes located on the outside of the drum. Secure each paddle in place using the remaining two screws, spring washers and smallest nuts. Finally tighten the two nuts that were earlier left loose. The paddles should not move around in the drum.



User Guide

Assembly Instructions

Step 5

To assemble the stand take the three stand pieces as shown here. The drum stand will slot down onto the main support and wheel support, connect and secure using 4 of bolts, washers and nuts from bag 3.

Step 6

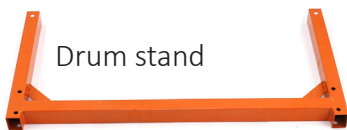
Attach the wheels to the wheel support using the fixings from bag 7.

Place an extra large washer onto one side of the spindle, then a wheel, another washer and finally secure the wheel in place using one of the pins. These pins may need to be hammered into place. Repeat on the other side.

Step 7

With the stand fully assembled you can now attach the drum to the stand.

The entire drum unit sits at the top of the stand, secured in place at the top of the stand on the left and right of the drum. Use the remaining fixings from bag 3 to do so.



Drum stand



Main support



Wheel support



User Guide

Assembly Instructions

Step 8

Slide the motor onto the thread on the right hand side of the stand, the same side as the wheels.

Attach the motor to the stand in two places.

First at the top of the stand with 2 x smaller bolts and washers from bag 6. This threads straight into the motor.

Then at the base of the motor. Using the included orange bracket (bag 1), and the remaining fixings from bag 6. This also threads straight into the motor.

The flat side of the orange bracket should be flat against the stand, as shown. See the image on the right.

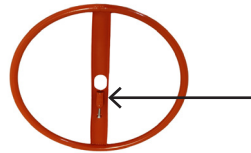
Step 9

The final stage is attaching the handle.

Thread the handle plate onto the left hand side of the stand and secure in place on either side using the smaller nuts, bolts and washers from bag 4.

Thread the handle onto the handle plate. Place the small metal plate inside the hole of the handle. Then follow this with the spring. Tighten the bolt underneath the spring.

Secure the handle in place using the remaining fixings from bag 4.



User Guide

Operation Instructions

1) Ensure the mixer is positioned on a flat and stable surface, preferably a slab of existing concrete or mixing board to stop concrete dripping onto the ground. Connect the power cord to a power supply and turn on the mixer.

2) Position the drum at the angle you wish to operate it at using the rotary handle. If the drum is positioned vertically the concrete will not mix properly, tip the mixer to around 45° without spilling any concrete.

Always start the mixer before loading. Press the green power button to start the mixer.

3) Add water first then begin to load the drum with the required gravel, cement, sand - as advised on your cement or concrete mix packaging.

4) Do not throw materials into the mixer to avoid bounce back from the drum. Press the red power button to stop the machine before reaching into the machine to check the consistency.

5) When the cement or concrete is mixed to the required consistency, do not turn off the mixer. The machine should be unloaded whilst the drum is rotating.

6) Using the rotary handle, tip the drum towards the ground and pour the cement or concrete into a wheelbarrow ready to be cast.

7) Clean this product immediately after every use and unplug the appliance from the wall whilst cleaning. Do not leave this for later as it will become difficult to remove and avoid scraping the dried cement from the drum using tools, as this may cause damage to the mixer.

8) Do not use harsh chemicals and liquids to clean the mixer, it can be cleaned using a mixture of water and approximately 25mm gravel in the rotating drum. After two minutes, unload then spray with water inside and out.

9) Never pour any active cement or water containing bits of mixed cement down a drain. Unload any excess onto a tarpaulin and allow it to dry before disposing of it.

Troubleshooting

Recommendations

- 1) Add water first so the sand and cement doesn't stick to the sides, making it easier to clean afterwards.
- 2) Only mix the amount of concrete you need, as once the cement starts setting you will be limited to the amount of time you have to work with the concrete.
- 3) Add water a little bit at a time to achieve a thick and workable consistency.
- 4) Do not overload the drum, the maximum capacity is 70 litres.
- 5) If you plan to store the machine for a long period of time, prevent rust by covering the drum in a thin layer of oil.

Resolution Guide

Please read through the guide below if you have any issues or faults with your device. The information covers and resolves the majority of frequently asked questions.

Q: The materials are not mixing thoroughly.

A: If the machine isn't positioned horizontally enough during mixing, the blades will not blend the materials together. Using the rotary handle, tip the drum to a more horizontal position without spilling any cement. Continue mixing, if the problem persists turn off the machine and use a shovel to mix in any problem areas. If this issue continues please contact our Customer Support department via the details on the Contact page.

Q: The mixing drum doesn't turn.

A: The most common cause of this is the belt that has either broken, stretched or loosened. Another problem could be something like sand or grit is stuck in the bearings. Clean down the machine inside and out, see if this solves the problem. If you still have issues please contact our Customer Support department via the details on the Contact page.

Safety Advice

Safe Working Practice

Please read through the safe working practice to ensure prevention of injury or damage to the device.

Do not operate the device in areas of high temperature or humidity as the machine may not function correctly.

When the device is not in use ensure that the power plug is removed from the socket. This will prevent damage to the appliance through power surges.

Disconnect the cement mixer from the power source before replacing accessories or putting into storage.

Never use the power cord to pull the plug from the socket. Keep away from heat, oils and sharp objects. If the cord is damaged do not operate the appliance and replace before use.

Do not operate the mixer if you are drowsy or under the influence of drugs or alcohol – slow responses can cause injuries to the user.

Avoid wet concrete contacting the skin or eyes, wash immediately with plenty of water and seek medical attention.

This appliance can be dangerous if the power cord or wires come into contact with water. Attaching a RCD adaptor will instantly cut off the electricity supply to the machine to prevent potentially fatal shocks.

The workstation should be well lit and clear of hazards. Do not operate the mixer around flammable liquids and gases or dusty environments.

Maintain proper control of the machine at all times, distractions may cause damage to the machine or injury to the user. Bystanders should keep a safe distance from the machine during operation.

This concrete mixer should be operated by a competent person. Keep out of reach of children and do not allow children to operate the machine.

Do not pour water on the electrical housing or near the vents.

Appropriate clothing must be worn whilst operating this machine. Loose clothing, long hair and jewellery could be caught in moving parts and cause injury. Always wear safety glasses, respirator, non-slip safety shoes, hard hat and headphones in appropriate conditions.

Contact Us

Sales Department

For information regarding this device or other products from our Monster divisions please use the following details below.

Tel: 01347 878888

Email: hello@monstershop.co.uk

Support Department

For queries about this device, warranty, returns or reporting faults please use the following details below.

Tel: 01347 878887

Email: help@monstershop.co.uk

Website

To view our product range and fantastic offers in the Monster divisions please visit our website

www.monstershop.co.uk

Address

To visit our office Monster House and view our products, send postal correspondence or return items our address is provided below.

Monster House, Alan Farnaby Way, Sheriff Hutton
Industrial Estate, Sheriff Hutton, York YO60 6PG



Monster Group (UK) is one of the UK's fastest growing online retailers. We supply a diverse range of products which offer exceptional value for money. We strive to provide the best possible customer experience with free UK delivery across all our products and a Monster Guarantee for 100% satisfaction.

Our dedicated customer service team will be more than happy to help with any questions you may have.

Home & Garden
Storage Shelving
Sign & Digital
Retail & Hospitality
Commercial Equipment

Check out all our Monster brands at www.monstershop.co.uk
