



10638/10639

300L Aquarium



Try **Monster** - Buy **Monster** - Be **Monster**

Specification

Product Description

Fish are mesmerising and whether you are a child or adult, it can be very easy to spend hours staring into the blue depths of an aquarium.

If you want to replicate a tropical beach haven or simply need a new home for your beloved fish, this aquarium cabinet is perfect for you! With a capacity of 300 litres, there's plenty of room for gravel, ornaments, the filter and of course you little swimming friends!

Both engaging and restful, this aquarium comes in an option of black and white; both include a filtration system and lighting.

Now the cabinet itself – this features 2 doors, with a shelf concealed inside. So you can create tranquillity not only by watching the fish – but by tidying away any bits of mess. Now that's one good stress buster!

Not only suitable for households, the tank is great for offices, hotel lobbies, doctor and dental surgery reception areas.

Product Specifics

Power:	300 Watts
Weight:	74 KG (Tank) + 33 KG (Cabinet)
Dimensions:	39cm W x 143.5cm H x 120.5cm D 39cm D x 77cm H x 120cm W (Tank) 38cm D x 66.5cm H x 120cm W (Cabinet)
Tank Capacity:	300 Litre

Monster Guarantee

If you wish to return a product in perfect working order, we provide a 30 day returns policy as long as the item is unopened and in a resalable condition.

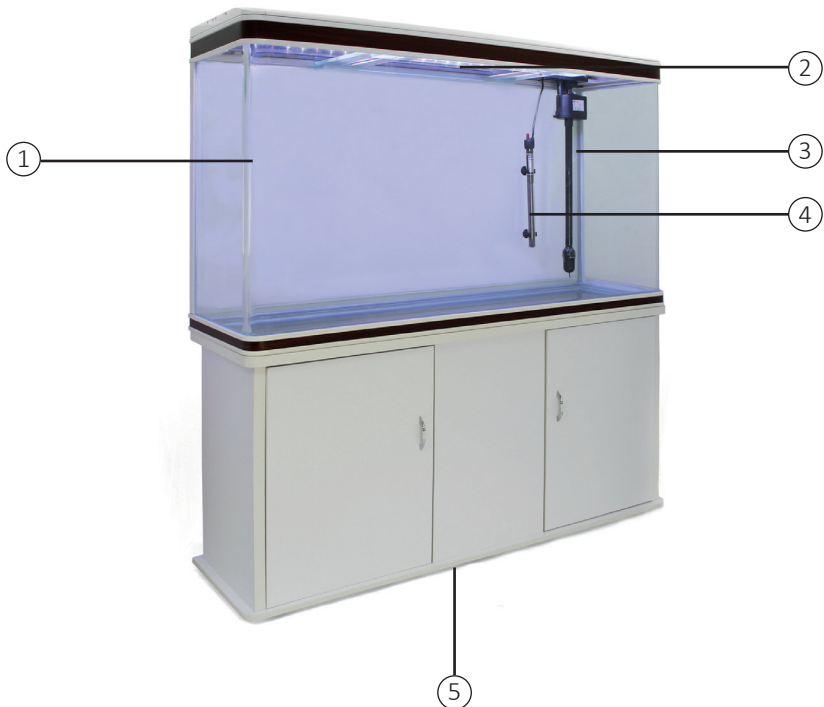
A 12 month warranty applies to all of our electrical products; we will cover the cost of labour and parts. Our policy is to try and repair the item before arranging an exchange or refund.

For full terms and conditions contact our Support Department via the details on the Contact Us page.

Specification

Product Features

1. Fish Tank
2. Light
3. Filter
4. Heater (Optional)
5. Cabinet
6. Feet

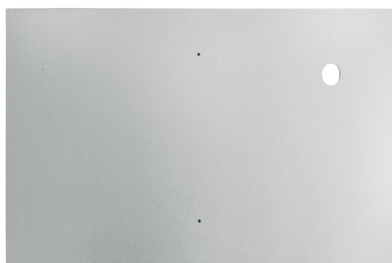


Specification

Product Parts

A number of items will come with your Aquarium:

- 1 Top
- 1 Base
- 1 Shelf
- 1 Back Panel
- 1 Front Panel
- 1 Centre Panel
- 2 Side Panel
- 2 Door



Back Panel



Top



Base



Side Panel (2)

Centre Panel



Door (2)



Front Panel



Shelf

Specification

Product Parts



Cam Lock (16)



Cam Dowel (16)



Hinge Screw (16)



Feet Screw (6)



Handle Screw (4)



Wooden Dowel (4)



Metal Dowel Pin (4)



Handles (2)



Hinges (4)



Feet (6)



Wire Ring (1)

User Guide

Assembly Instructions

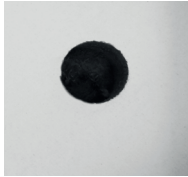
Please follow these simple instructions to assemble the cabinet part of the fish tank. Once the cabinet is complete, the tank can be placed on top.

Step 1:

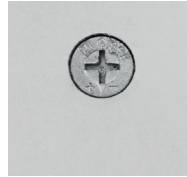
Familiarise yourself with all the parts using the images in Product Parts. Work in an appropriate area, with plenty of room.

Step 2:

First place all the cam locks into the various cabinet parts, with the arrow pointing towards the edge.



Cabinet Part
WITHOUT Cam Lock



Cabinet Part WITH
Cam Lock

Step 3:

Screw all the cam dowels into the appropriate holes (they are rubberised for your reference).



User Guide

Assembly Instructions

Step 4:

Now all the parts are prepped, start with the base. The cam dowelling should be at the top. The front of the cabinet will have the curved edges.



Step 5:

Ensuring the thicker part of the side panel is at the front of the base, place a side panel and fix by slotting together and tightening the cam locks. This is done by turning in the direction of the + sign using a cross head screwdriver.

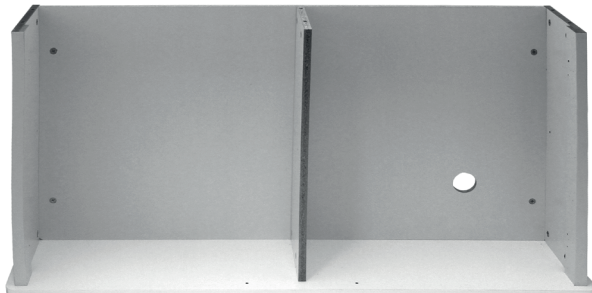
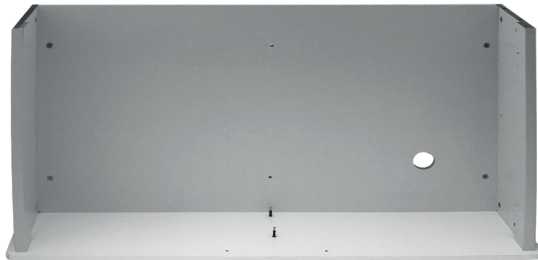
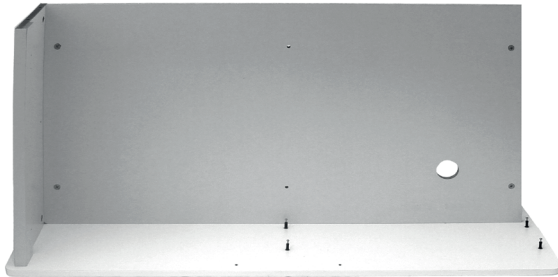


User Guide

Assembly Instructions

Step 6:

Repeat this process with the back panel, the second side panel and lastly the centre panel.



User Guide

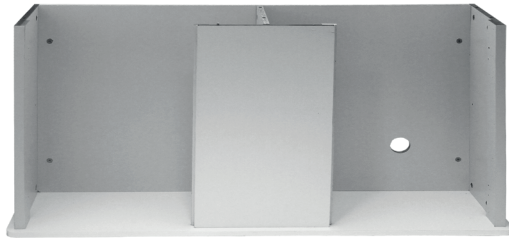
Assembly Instructions

Step 7:

For the front panel, before attaching to the cabinet, gently tap the wooden dowels into the 4 holes on the edges.

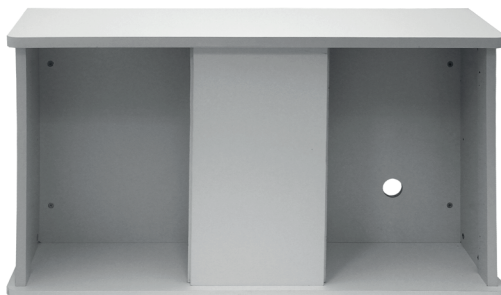
Step 8:

Slot the front panel into the base and gently tap down if necessary.



Step 9:

Attach the cabinet top, again using the cam lock and cam dowel mechanism, turning with a cross head screwdriver in the + direction.



User Guide

Assembly Instructions

Step 10:

Push in the plastic wire ring.



Step 11:

Using the 4 metal dowel pins, push them into the shelving holes (located on either side, you can choose which side you want it on). Then simply slot in the shelf.



Step 12:

The 4 hinges now need to be attached to the cabinet doors. To do this, first attach the hinges with screws onto the doors.

User Guide

Assembly Instructions

Step 13:

Once the hinges are attached to the doors, screw them into place on the side panels. Repeat this process for the second door.

DO NOT shut the doors before attaching the handles – you will struggle to get it open again without tipping the entire cabinet it forward.



Step 14:

Screw on the 2 handles.

Please Note: You may find the doors do not sit straight when closed. To rectify this, please loosen or tighten the hinge screws until the door sits straight.

Step 15:

Turn the cabinet onto its front and screw in place the 6 feet. Attach 3 along the front and 3 along the back, all evenly distributed.



User Guide

Assembly Instructions

Step 16:

You can now place the glass tank on top.

Please Note: This is a 2 man job as it is very heavy!

Now you are ready to create your aquarium.



User Guide

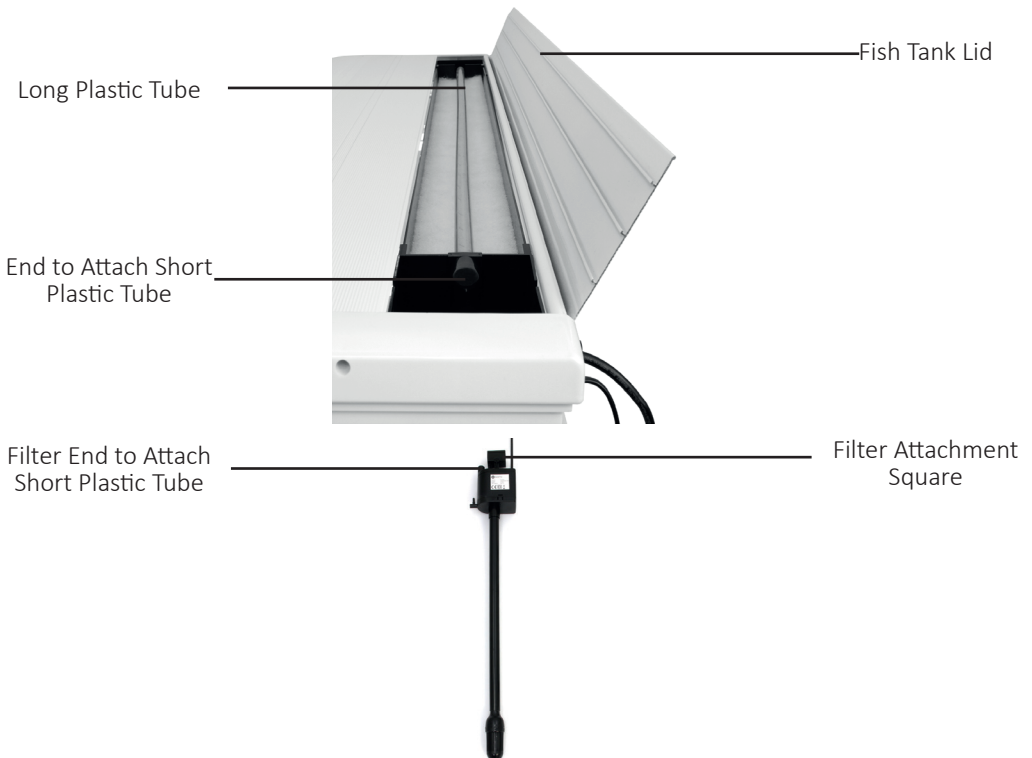
Installing the Filter

Step 1:

With the lid open, there is a long plastic tube that runs along the width of the tank.

At the right hand end (when looking from the front) of the tube, push in the short plastic tube provided. This is a tight fit and may take a little force to attach properly. This will hang down into the tank.

Now, place the filter in the tank and push it up through the open rectangle. The filter attachment square needs to be pushed up while simultaneously attaching the short plastic tube to the filter. The filter will click into place when securely attached.



User Guide

Installing the Filter

Step 2:

If the filter stays in place when left to hang, then it has been installed successfully.

Step 3:

To adjust the bubble flow rate there is a small flow duct at the top of the air and oxygen hose pipe. This can be turned to increase or decrease the bubble flow. This flow duct needs to be above the water level.

Step 4:

Once you have filled the tank with a desired amount of gravel, the filter may be too long. The filter will need to be trimmed, to sit at least 2 inches above the gravel surface.

Please Note: Filling the tank with gravel and trimming the filter will be done at a later stage (User Guide, First Water Filling, Step 5).

User Guide

First Water Filling

Step 1:

Your fish tank should now be assembled and tested before being moved to its final location. To do this, cover a level surface with sheets of newspaper and place the tank on top. Carefully fill the tank to the rim and leave it for a couple of hours. If the newspaper is wet you know you have a problem with your tank. It is extremely rare to have a leak, but it is worth testing before filling. Once you know that there are no issues with your tank you can empty the testing water and then move it to its permanent location.

Step 2:

Make sure that the floor beneath the aquarium is perfectly level as otherwise water could leak from the top of your aquarium, and in the long term, the strain could make the glass crack. Make sure the tank is also placed near sockets so you can switch on the filter and lighting.

Step 3:

We recommend giving the tank a quick clean using tap water to remove any debris collected during transit. Do not use washing up liquid or any chemicals, at this stage or at any point in the future on the tank or any of the equipment. Repeat this process for any ornaments.

Step 4:

Fill the tank with tap water. Different fish have different living environment requirements. When deciding on what fish and or aquatic plants you wish to house please speak with an aquatic specialist at a store or centre. This will determine if you require specific heating, water conditions etc. This advice is best suited to a specialist. You cannot simply place the fish in untreated tap water.

Step 5:

Now the fun part – time to decorate with ornaments. Trim filter to appropriate length.

User Guide

First Water Filling

Step 6:

Turn on the filtration system- it is vital you cycle the fish tank to allow the ecosystem to develop in order to minimise any fish loss. It's important not to overstock the tank and also not to add too many fish all at once especially in the early stages. There are many articles online that provide advice on cycling fish tanks; alternatively you can gain advice from your local aquatic store.

Step 7:

Allow the fish to acclimatise. Do not feed them straight away, it will take them a few days to feel safe in their new surroundings.

Step 8

Specific fish and aquatic plant species will require a certain climate, please speak to experienced staff before adding to the tank.

Please Note: At Monster Group, we are not to be held responsible for the health and care of your aquatic life. We heavily stress the importance of gaining advice from professionals.

Troubleshooting

Resolution Guide

Please read through the guide below if you have any issues or faults with your device. The information covers and resolves the majority of frequently asked questions.

Q: There are parts missing from my order

A: If there appears to be any part missing from your package contact our Customer Support team via the details on the 'Contact Us' page.

Q: I think my tank is leaking.

A: Please refer to 'First Filling' in the User Guide. If you have replicated this process and the tank is leaking first you will need to locate the leak. You should be able to locate it through touch and sight. Mark with a felt-tip pen. Drain the water below the leaking location and dry the area. If you already have fish in the tank, you make need to relocate them temporarily.

Scrape off the old sealant around the leaking area with a razor scraper, do not remove sealant that is in working order. Clean and wipe down the area, removing any excess. Leave for 15 minutes.

Apply nontoxic 100% silicone sealant to the leak area. Leave to dry for 24 hours.

Refill the tank and inspect for leaks. If you have removed fish and plants from the tank, replace them when you are confident the leak is repaired.

Q: The water is cloudy.

A: Make sure your filtration system is turned on. Like the tank, you will need to clean the filter to maintain its working life. A weekly partial water change is also recommended. If the filter is clean/on and the water is still going cloudy then there is a fault with the filter. Please contact our Support Team and we will talk you through further solutions or repair/replace based on its warranty.

Q: There is a large build up of algae.

A: You will need to clean the tank, but you can reduce the build up of algae by ensuring the light switch is turned off at times. Turning the lights off will also keep your fish happier.

Q: The light will not turn on.

A: Ensure the lighting is plugged in at the mains and switched on. If it still does not work, please check the fuse in the plug.

Safety Advice

Safe Working Practice

Please read through the safe working practice to ensure prevention of injury or damage to the device.

Use only for indoors.

Only use genuine spare parts to maintain a safe and usable aquarium cabinet.

If damaged, do not operate or use.

Do not operate or build if you are drowsy or under the influence of drugs or alcohol – slow responses can cause injuries to the user.

The workstation should be well lit and clear of hazards.

To avoid back injury, lift the tank with 2 people.

Do not attempt to lift by bending forward. Bend your hips and knees to squat down to your load, keep it close to your body, and straighten your legs to lift. Never lift a heavy object above shoulder level. Avoid turning or twisting your body while lifting or holding a heavy object.

Test fill the tank before filling properly.

Create an appropriate atmosphere for different species of fish.

Get expert advice before choosing fish.

Keep the Aquarium Cabinet and accessories clean to prolong working life.



Contact Us

Sales Department

For information regarding this device or other products from our Monster divisions please use the following details below.

Tel: 01347 878888

Email: hello@monstershop.co.uk

Support Department

For queries about this device, warranty, returns or reporting faults please use the following details below.

Tel: 01347 878887

Email: help@monstershop.co.uk

Website

To view our product range and fantastic offers in the Monster Chef division please visit our website

www.monstershop.co.uk

Address

To visit our office Monster House and view our products, send postal correspondence or return items our address is provided below.

Monster House, Alan Farnaby Way, Sheriff Hutton
Industrial Estate, Sheriff Hutton, York YO60 6PG



Monster Group (UK) is one of the UK's fastest growing online retailers. We supply a diverse range of products which offer exceptional value for money. We strive to provide the best possible customer experience with free UK delivery across all our products and a Monster Guarantee for 100% satisfaction.

Our dedicated customer service team will be more than happy to help with any questions you may have.

Home & Garden
Storage Shelving
Sign & Digital
Retail & Hospitality
Commercial Equipment

Check out all our Monster brands at www.monstershop.co.uk
