



10678

80 Litre

Industrial Vacuum

MAXBLAST

Try **Monster** - Buy **Monster** - Be **Monster**

Specification

Product Description

Keep that warehouse not only organised, but now clean with the Maxblast 80 Litre Industrial Vacuum. It is perfectly suited towards any industrial environment, but can adapt to any location – as long as there's a power outlet for the plug socket!

The highly powerful 3000 Watt motor can vacuum both wet and dry substances with one of its four hose attachments. Choose from the two floor brushes, the bristle and crevice nozzle attachment.

Effortless to empty and fill the stainless steel drum, combined with the 80 Litre tank capacity and easy to manoeuvre castor wheels means you really can clean every nook and cranny.

Technical Information

Voltage:	230 V / 50 Hz
Power:	3000 W
Amperage:	10 A
Air Flow:	106 L/S
Noise Level:	80 dB
Filter:	Cloth Filter

Product Specifics

Drum Capacity:	80 L
Weight:	28 Kg
Dimensions:	58.5 x 57.3 x 99 CM

Monster Guarantee

If you wish to return a product in perfect working order, we provide a 30 day returns policy as long as the item is unopened and in a resalable condition.

A 12 month warranty applies to all of our electrical products; we will cover the cost of labour and parts. Our policy is to try and repair the item before arranging an exchange or refund.

If for any reason a part is missing please get in touch with us within 7 days on receipt of your order. You can contact our friendly and helpful Customer Support Team via email or call. For full terms and conditions contact our Support Department via the details on the Contact Us page.

Specification

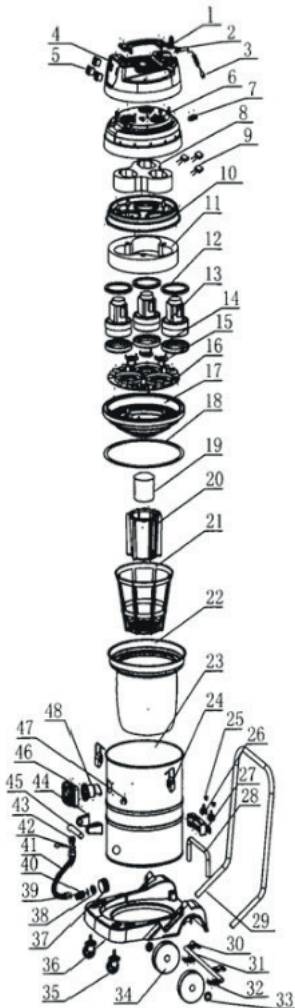
Product Features

- 1) Vacuum Attachment
- 2) Pedestal
- 3) Stainless Steel Drum
- 4) Vacuum Hose
- 5) Handle
- 6) Power Switch
- 7) Drain Hose
- 8) Wheel



Specification

Product Parts



1. Handle
2. Coating
3. Power Cable
4. Top Cover
5. Switch
6. Middle Cover
7. Pad
8. Sponge
9. Capacitor
10. Middle Cover Gasket
11. Air Outlet Sponge
12. Upper Gasket
13. Motor
14. Lower Gasket
15. Air Inlet Blocking Board
16. Motor Pedestal
17. Drum Cover
18. Wind Tight Ring
19. Protective Valve
20. Pedestal Basket
21. Support Basket
22. Filter
23. Drum
24. Drum Lock
25. Locking Block
26. Turnover Part
27. Turnover Shelf
28. Turnover Support Shelf
29. Base Big Handrail
30. Axle Press-Cover
31. Axle
32. Axle Press-Bottom
33. Cork
34. Rubber Wheel
35. Wheel
36. Pedestal
37. Tight Gasket
38. Water Outlet
39. Rubber Gasket
40. Water Outlet Screw
41. Water Outlet Hose
42. Connector Ring
43. Water Outlet Coating
44. Handle Pedestal
45. Stainless Steel Tube
46. Suction Pedestal
47. Ring
48. Suction Valve

User Guide

Operation Instructions

Step One:

Insert the hose connector into the air inlet mouth. Make sure the connector is securely fastened.



Step Two:

Check the dual filter is in place for dry vacuuming. If you are wet vacuuming, remove everything from the drum. Place the power cord right at the back of the drum when in use. If you wish, before dry vacuuming, you can add the dust bag.

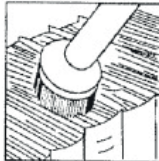
Step Three:

Attach desired vacuum nozzle.



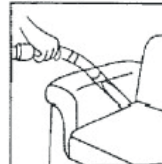
Wet Floor Nozzle

For carpet and hard flooring.



Bristle

For windows and tables.



Crevice Nozzle

For tight corners and crevices.

Step Four:

Switch on at mains, and press 'On' button to power up.

User Guide

Cleaning Care

Drum Cleaning

If you have noticed the suction has decreased, the drum is full. To empty:

1. First you need to switch off at the power supply.
2. Unfasten the locking knob and lift off the top cover.
3. Take off the filter bag and clean the dust away from the drum.
4. When empty, replace the clean filter bag and lock the top cover back into place.

Dual Filter Cleaning

The Cloth Filter should be washed with warm water. If required, you can use a soft cloth to wipe.

Remove the filter before cleaning and allow to dry before re-installing.

Note: The Dust Bag should not be washed, please ensure you are washing the Cloth Filter, not the Dust Bag.



Cloth Filter



Dust Bag

Troubleshooting

Resolution Guide

Please read through the guide below if you have any issues or faults with your device. The information covers and resolves the majority of frequently asked questions.

Q: The vacuum has lost suction.

A: Ensure the vacuum is empty, the filter is clean and there are no blockages in the hose/attachment.

Q: There are parts missing from my order.

A: If there appears to be any part missing from your package contact our Customer Support team within 7 days of receipt. Details are on the Contact Us page.

Q: My industrial vacuum will not start.

A: Check the plug is attached to a power supply and the drum is empty. Check the fuse in the plug. When checking the fuse, ensure the vacuum is switched off at the mains. If it still will not start, simply call or email our Support Team. They will guide you through issues or arrange a date and time for us to collect the product and fix it with our 12 month guarantee.

Q: My hose attachment isn't working properly.

A: This is most likely a broken belt. To replace, unscrew the cover plate behind your vacuum's brush and see the condition of the belt. If it looks damaged, just place one end into the drive shaft and the other on the brush's grooves. Place back the brush and turn it a few times to check if you have replaced it properly.

Safety Advice

Safe Working Practice

Please read through the safe working practice to ensure prevention of injury or damage to the device.

Do not use the machine if the power cord is frayed or damaged.

When the device is not in use ensure that the power plug is removed from the socket. This will prevent damage to the appliance through power surges.

This appliance can be dangerous if the power cord or wires come into contact with water.

Clean this product after use and unplug the appliance from the wall whilst cleaning.

Do not overwork the machine.

If damaged, do not operate the machine.

Do not pour water on the electrical housing or near the vents.

Appropriate clothing must be worn whilst operating this machine.

Keep clean to prolong the life.

Do not jam the air inlet mouth.

Do not operate near combustible and explosive areas/items.

Do not vacuum combustible, explosive or sharp items.

Do not turn the machine upside down.

When repairing, remove plug from power supply.

Keep away from bright sunlight and high temperatures.

To clean, do not pour water on it. Wipe down and dry with a cloth.



Contact Us

Sales Department

For information regarding this device or other products from our Monster divisions please use the following details below.

Tel: 01347 878888

Email: hello@monstershop.co.uk

Support Department

For queries about this device, warranty, returns or reporting faults please use the following details below.

Tel: 01347 878887

Email: help@monstershop.co.uk

Website

To view our product range and fantastic offers in the Monster divisions please visit our website

www.monstershop.co.uk

Address

To visit our office Monster House and view our products, send postal correspondence or return items our address is provided below.

Monster House, Alan Farnaby Way, Sheriff Hutton
Industrial Estate, Sheriff Hutton, York YO60 6PG



Monster Group (UK) is one of the UK's fastest growing online retailers. We supply a diverse range of products which offer exceptional value for money. We strive to provide the best possible customer experience with free UK delivery across all our products and a Monster Guarantee for 100% satisfaction.

Our dedicated customer service team will be more than happy to help with any questions you may have.

Home & Garden
Storage Shelving
Sign & Digital
Retail & Hospitality
Commercial Equipment

Check out all our Monster brands at www.monstershop.co.uk
