



**20245**

# Metal Planetary Ring Roller



Try **Monster** - Buy **Monster** - Be **Monster**

# Specification

## Product Description

The T-Mech Mini Ring Roller can be used to form metal rings for ornamental iron work, chandeliers, chains, chain link fencing and plant holders.

Create rings from 1" diameter to as large as you need, just turn the knob to increase or decrease the pressure and form different radius rings of metal.

Both flat stock and round stock can be made into rings using this ring roller.

We at Monster Group UK understand this is a new and exciting purchase, and although it is tempting to get stuck in please carefully read these instructions before you start using the machine.

**Please Note: The T-Mech Gear Driven Metal Planetary Ring Roller is designed to be used by a competent adult. Personal Protective Equipment (PPE) must be worn by the operator of this equipment and it should not be used in wet or damp conditions.**

**Please refer to and read Safety Advice, Safe Working Practice to ensure prevention of injury or damage to the device before starting.**

# Specification

## Product Specifics

Construction: 5/16" Steel

Ring Capacity: Unlimited

Flat Stock Capacity: 3/16" x 1"

Round Stock Capacity: 3/16" Diameter

Drive: Gear

Rollers: Heat Treated Steel

Handle: 13-1/2" Long

Weight: 7KG

## Monster Guarantee

If you wish to return a product in perfect working order, we provide a 30 day returns policy as long as the item is unopened and in a resalable condition.

A 12 month warranty applies to all of our electrical products; we will cover labour, parts and delivery charges. Our policy is to try and repair the item before arranging an exchange or refund.

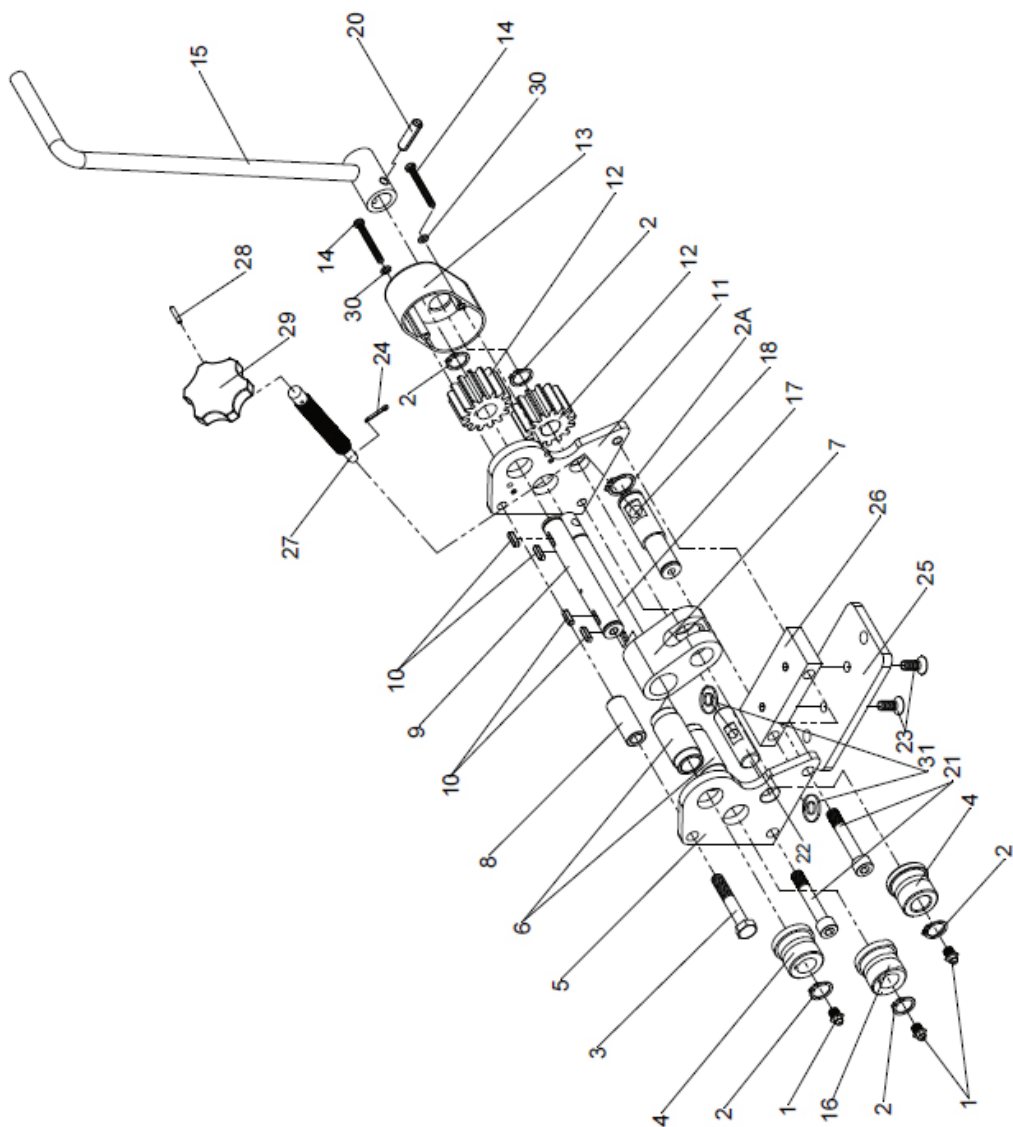
If for any reason a part is missing please get in touch with us within 7 days on receipt of your order. You can contact our friendly and helpful Customer Support Team via email or call. For full terms and conditions contact our Support Department via the details on the Contact Us page.

# Specification

## Product Features

1)	Grease Nipple M8X1	Qty: 3
2)	C-Ring 18mm	Qty: 5
2A)	C-Ring 22mm	Qty: 1
3)	Hex Bolt M10X60	Qty: 1
4)	Drive Wheel	Qty: 2
5)	Left Frame	Qty: 1
6)	Copper Bushing	Qty: 2
7)	Stand	Qty: 1
8)	Bushing	Qty: 1
9)	Drive Shaft I	Qty: 1
10)	Key 4X16	Qty: 1
11)	Right Frame	Qty: 1
12)	Gear	Qty: 2
13)	Cover	Qty: 1
14)	Screw M5X45	Qty: 2
15)	Handle	Qty: 1
16)	Adjustable Wheel	Qty: 1
17)	Drive Shaft II	Qty: 1
18)	Adjustable Shaft	Qty: 1
20)	Taper Pin 8X28	Qty: 1
21)	Hex Key Screw M10X60	Qty: 2
22)	Shaft (w/hole)	Qty: 1
23)	Hex Key Screw M8X20	Qty: 2
24)	Pin 3X12	Qty: 1
25)	Base	Qty: 1
26)	Mounting Plate	Qty: 1
27)	Lead Screw	Qty: 1
28)	Locking Pin 3X18	Qty: 1
29)	Knob	Qty: 1
30)	Washer 5mm	Qty: 2
31)	Washer 8mm	Qty: 2

# Specification



# Safety Advice

## Safe Working Practice

**Please read through the safe working practice to ensure prevention of injury or damage to the device.**

Keep the work area clean and tidy.

Do not use this machine in damp or wet conditions.

Do not expose to rain or snow.

Keep the work area well lit.

Only competent adults should operate this machinery, children must never be allowed in the work area.

Store this machinery in a dry place to prevent rust. Always lock up these tools and keep them out of reach of children.

Do not modify this tool or use this tool for purposes it was not intended.

Do not force this tool to do the work of a large industrial tool.

Do not wear loose clothing or jewellery and tie long hair back, as they may be caught in the moving parts of this machinery.

Protective, electrically non-conductive clothes and non-skid footwear are recommended when working. Wear restrictive hair covering to contain long hair.

Always wear PPE impact eye protection and a dust mask when working around metal.

Keep proper footing and balance at all times.

Do not reach over running machines, keep hands and feet clear of the rollers when operating.

# Safety Advice

## Safe Working Practice

Always maintain tools with care - keep tools sharp and clean for better and safer performance. Follow instructions for lubricating and changing accessories.

Use gloves when operating this machinery to protect your hands and keep the handles clean, dry and free from oil and grease.

Check that keys and adjusting tools are removed from the machine before starting to work.

Do not operate this machine if you are ill, tired or under the influence of drugs or alcohol.

Before using the tool check for damaged parts. Make sure that the moving parts are aligned properly, any broken or misaligned parts may affect the working of the machinery.

Any damaged parts should be properly repaired or replaced by a qualified technician.

For your safety, service and maintenance should be carried out by a qualified technician.

When servicing, any replacement parts must be identical parts.

After bending or cutting work pieces, they may be sharp so use heavy duty gloves when handling metal work.



# User Guide

## Assembly

When unpacking your item, check to make sure that all parts shown in the Parts Diagram are included. If any parts are missing please contact our Support team via the details on the Contact page.

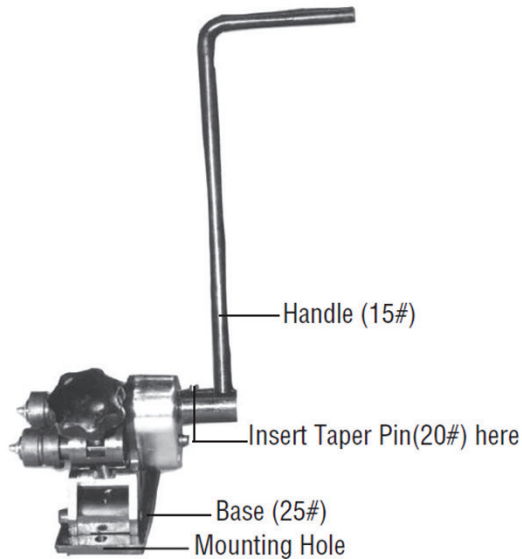
This T-Mech Mini Ring Roller will require minor assembly prior to operation. Please read this manual before assembling and using the Ring Roller.

Please refer to the Parts List when using this assembly guide to ensure all parts are attached correctly.

- 1) Slide the Handle (Part #15) onto the Drive Shaft II (Part #17), be sure that the holes in the Handle line up with the hole in the Drive Shaft II - see Fig.1.
- 2) Secure the Handle to the Drive Shaft II using the Taper Pin (Part #20). Insert the Taper Pin into the hole as seen in Fig.1. If necessary, lightly tap the Taper Pin into place.
- 3) Mounting surface - this must be flat, level and capable of supporting the weight of the roller combined with the materials to be rolled and the leverage force of the handle movement.  
  
The Ring Roller should be secured to the mounting surface using two bolts, lock washers, washers and nuts (not included).
- 4) Set the T-Mech Ring Roller on your appropriate mounting surface, making sure you can operate the handle comfortably.
- 5) Make marks through the two holes located at the far ends of the Base (Part #25).
- 6) Remove the Ring Roller from the mounting surface and drill holes through the marked locations on the mounting surface.
- 7) Place the Ring Roller back onto the mounting surface and secure it in place using two bolts, lock washers, washers and nuts (not included).



# User Guide



**Figure 1**

## Pre-Start Checks

Perform these checks before using the machine for the first time and at the start of each work session.

- 1) All operators should read the Safe Working Practice before operating this machinery.
- 2) Thoroughly inspect the Ring Roller for any signs of damage. Check all components are present and secure.
- 3) Make sure the working area is well lit, clear and the operator has enough space to use the machine
- 4) Personal Protective Equipment (PPE) especially eye protection, must be worn by the operator of this equipment.

# User Guide

## Operation Instructions

Never force the tool to do the work of a larger industrial tool. It is designed to do the job better and safer at the rate for which it was intended.

1) Determine the size of the ring you wish to create.

**Warning: Do not use flat stock larger than 3/16" x 1". Do not use round stock larger than 3/16".**

2) Move the Adjustable Wheel (Part #16) up or down (as required) by turning the Knob (Part #29)

For small ring sizes (approximately 1"), the Adjustable Wheel must be in its uppermost position.

For 2" rings, the Adjustable Wheel must be in the middle position.

For larger rings, the Adjustable Wheel must be at its lowest position.

It is recommended to practice on scrap stock to find the correct wheel adjustment to make the desired ring size.

3) Insert the stock between the Upper Drive Wheel (Part #4) between both the Adjustable Wheel and Lower Drive Wheel (Part #4) - see Fig.2.

4) Turn the Knob clockwise to clamp the stock between the Wheels.

**Warning: After stock has been clamped between the Wheels, keep hands and fingers clear of the Wheel whilst the handle is rotated.**

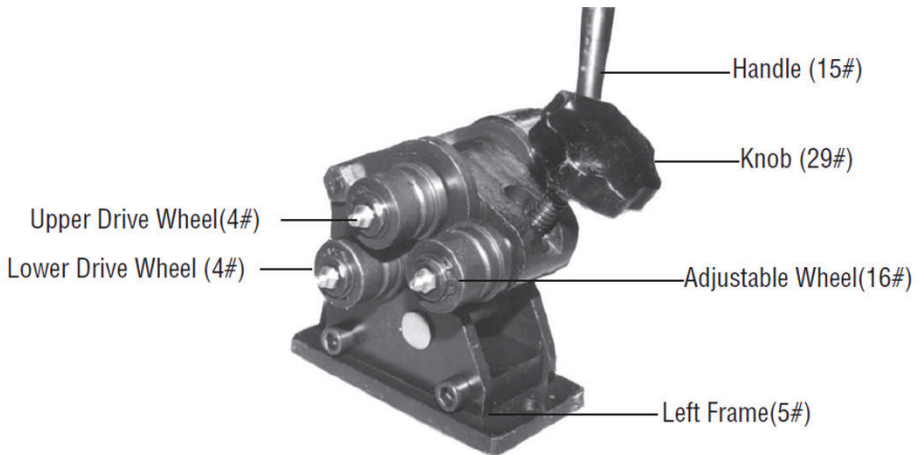
# User Guide

## Operation Instructions

5) Rotate the Handle counter-clockwise to process the ring.

6) To remove the completed rings, turn the Knob counter-clockwise to loosen the clamping action.

If you have any issues don't hesitate to contact our Support team on 01347 878887 who will be happy to advise you through the User Guide.



**Figure 2**

# User Guide

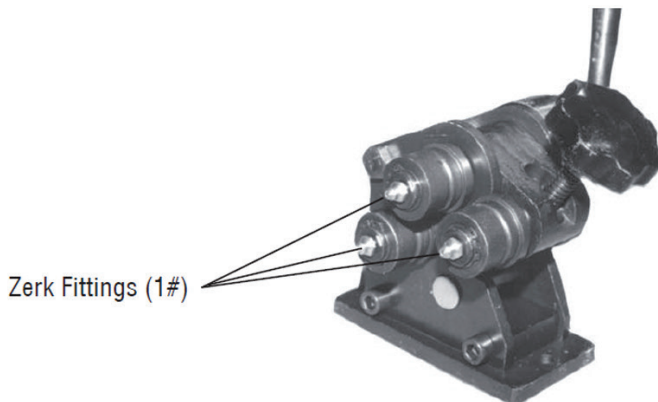
## Maintenance

**Please note: Maintenance should be carried out regularly, especially if the item has been in storage or unused for a long period of time.**

Regularly clean the work surface using a non-toxic solvent.

Lubricate the Drive Shaft (Part #9), Drive Shaft II (Part#17) and the Adjustable Shaft (Part #18). Grease using the Grease Nipples (Zerk Fittings) (Parts #1) - see Fig. 3.

Store in a dry area out of reach of children.



**Figure 3**

# Contact Us

## Sales Department

For information regarding this device or other products from our Monster divisions please use the following details below.

Tel: 01347 878888

Email: [hello@monstershop.co.uk](mailto:hello@monstershop.co.uk)

## Support Department

For queries about this device, warranty, returns or reporting faults please use the following details below.

Tel: 01347 878887

Email: [help@monstershop.co.uk](mailto:help@monstershop.co.uk)

## Website

To view our product range and fantastic offers in the Monster divisions please visit our website

[www.monstershop.co.uk](http://www.monstershop.co.uk)

## Address

To visit our office Monster House and view our products, send postal correspondence or return items our address is provided below.

Monster House, Alan Farnaby Way, Sheriff Hutton  
Industrial Estate, Sheriff Hutton, York YO60 6PG







---

Monster Group (UK) is one of the UK's fastest growing online retailers. We supply a diverse range of products which offer exceptional value for money. We strive to provide the best possible customer experience with free UK delivery across all our products and a Monster Guarantee for 100% satisfaction.

Our dedicated customer service team will be more than happy to help with any questions you may have.

Home & Garden  
Storage Shelving  
Sign & Digital  
Retail & Hospitality  
Commercial Equipment

**Check out all our Monster brands at [www.monstershop.co.uk](http://www.monstershop.co.uk)**

---