

20246

Metal Shrinker/Stretcher



Try **Monster** - Buy **Monster** - Be **Monster**

Specification

Product Description

This handy Metal Shrinker/Stretcher is the perfect tool for making perfect fit patch panels around wheel openings, door jambs, trunk rain gutters and windshields. The shrinker attachment forms outside radius curves and the stretcher attachment forms inside radius curves.

It is easy to operate and is made from strong cast iron. Mount it to your bench or work surface for extra stability whilst working (mounting hardware is not included).

Product Specifics

Mild Steel Maximum Thickness: Up to 18 gauge (1.2mm)

Aluminium Maximum Thickness: Up to 16 gauge (1.5mm)

Weight: 5.9KG

Monster Guarantee

If you wish to return a product in perfect working order, we provide a 30 day returns policy as long as the item is unopened and in a resalable condition.

A 12 month warranty applies to all of our electrical products; we will cover labour, parts and delivery charges. Our policy is to try and repair the item before arranging an exchange or refund.

If for any reason a part is missing please get in touch with us within 7 days on receipt of your order. You can contact our friendly and helpful Customer Support Team via email or call. For full terms and conditions contact our Support Department via the details on the Contact Us page.

Contact Us

Sales Department

For information regarding this device or other products from our Monster divisions please use the following details below.

Tel: 01347 878888

Email: hello@monstershop.co.uk

Support Department

For queries about this device, warranty, returns or reporting faults please use the following details below.

Tel: 01347 878887

Email: help@monstershop.co.uk

Website

To view our product range and fantastic offers in the Monster divisions please visit our website

www.monstershop.co.uk

Address

To visit our office Monster House and view our products, send postal correspondence or return items our address is provided below.

Monster House, Alan Farnaby Way, Sheriff Hutton
Industrial Estate, Sheriff Hutton, York YO60 6PG

Safety Advice

Safe Working Practice

Please read through the safe working practice to ensure prevention of injury or damage to the device.

Do not operate the device in areas of high temperature or humidity as the machine may not function correctly.

This product should only be used by a competent person who has read and understood this manual.

Do not modify this product in any way. Unauthorised modification may impair the function and/or safety and could decrease the life of the product.

If damaged, do not use.

Ensure the equipment is assembled securely before use.

Keep the working area clear from obstructions.

Wear appropriate clothing during use.

Do not exceed the capacities.

Do not use the product for applications other than which it was intended.

General cleaning and maintenance is required to prolong the working life of the product.

Do not use the tool where there is a risk of causing a fire or an explosion; e.g., in the presence of flammable liquids, gases, or dust. The tool can create sparks, which may ignite dust or fumes.

Do not allow the tool to come into contact with an electrical source. Contact will cause a shock.

Keep children and bystanders away from the work area while operating the tool. Do not allow children to handle the tool.

Safety Advice

Safety Working Practice

Do not use the tool while you are tired or under the influence of drugs, alcohol, or medication.

Do not wear loose clothing, dangling objects, or jewellery. Keep your hair, clothing and gloves away from moving parts. Loose clothes, jewellery, or long hair can be caught in moving parts.

Personal Protective Equipment (PPE) must be worn by the operator of this equipment.

Store the tool when it is not in use. Store it in a dry, secure place out of the reach of children. Inspect the tool for good working condition prior to storage and before re-use.

Use only accessories that are recommended by the manufacturer for use with your tool. Accessories that may be suitable for one tool may create a risk of injury when used with another.

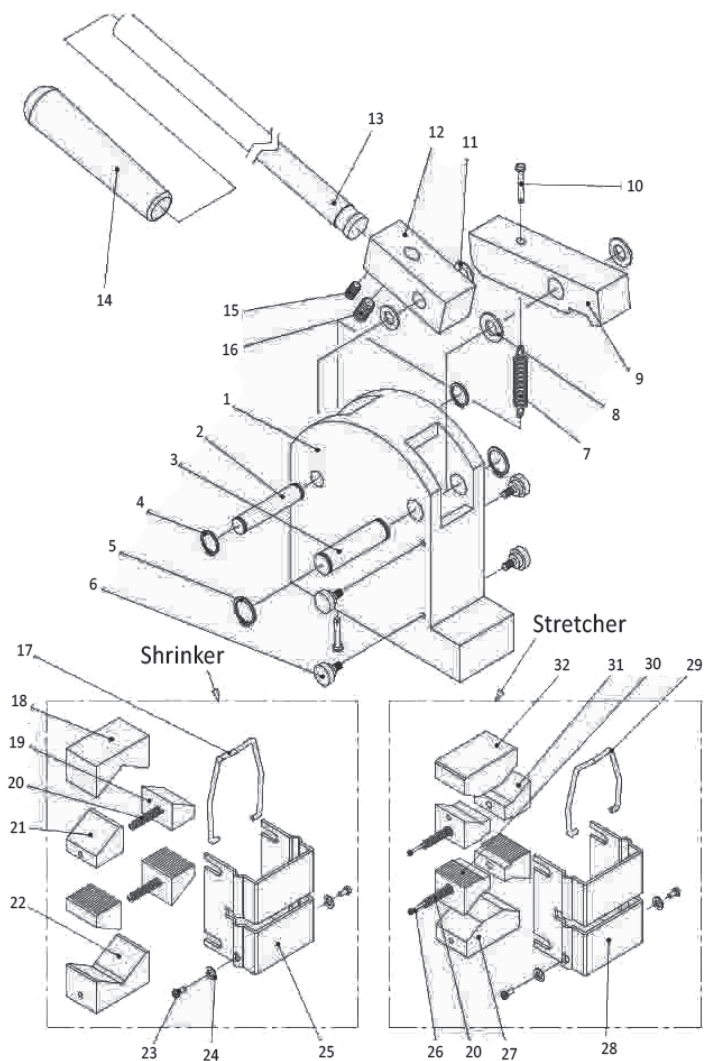
Use on a sturdy and level work surface.

When mounting this product to a work surface, check that all mounting hardware are secure before commencing operation.



Specification

Product Features



Specification

Product Features

Parts List

Part No.	Fig. No.	Description	Q'ty
1	SS18-105	Body	1
2	SS18-103	Pin I	1
3	SS18-104	Pin II	1
4	GB/T894.1	Retaining ring for bearing 10	2
5	GB/T894.1	Retaining ring for bearing 13	2
6	SS18-102	Bolt	4
7	SS18-108	Spring	1
8	SS18-401A	Washer	2
9	SS18-110	Pressure Arm	1
10	SS18-109	Rivet	2
11	SS18-401B	Washer	2
12	SS18-107	Fulcrum Arm	1
13	SS18-106	Handle	1
14	SS18-106.1	Vinyl Grip for Handle	1
15	GB/T77	Inner-hex bolt M6X10	1
16	GB/T77	Inner-hex bolt M8X20	1
17	SS18-301	Suspension Wire	1
18	SS18-302	Die 1	1
19	SS18-305	Die 3	2
20	SS18-206	Spring	4
21	SS18-303	Die 2	2
22	SS18-306	Die 4	1
23	GB/T67	Bolt M4X10	4
24	GB/T95	Washer 4	4
25		Cover for Shrinker	1
26	GB/T65	Bolt M4X35	2
27	SS18-205	Die 4	1
28		Cover for Stretcher	1
29	SS18-201	Suspension Wire	1
30	SS18-204	Die 3	2
31	SS18-203	Die 2	2
32	SS18-202	Die 1	1

User Guide

Before Each Use

Check that the die (shrinker or stretcher) that will be used is attached to the body securely and the body is securely mounted on a suitable work surface.

Verify that the die used will close when the handle (Part #13) is pulled down and open when the handle is raised.

Periodically check the shrinker/stretcher for wear or damaged parts and that it is debris-free to perform its function.

Operating Instructions

Note: Any work piece must be within the shrinker/stretcher's maximum capacity.

After testing the shrinker/stretcher operation, place the work piece in the middle of the jaw box then press down the handle to form the piece.

Bolt #16 can be adjusted to control the handle height and the open spaces between the upper and lower dies to accommodate different requirements.

Maintenance Instructions

It is recommended that the general condition of any tool be examined before it is used.

Keep your tool in good repair by adopting a program of conscientious repair and maintenance in accordance with the recommended procedures found in this manual.

Keep all cutting tools sharp and clean. Properly maintained cutting tools with sharp cutting edges are less likely to bind and are easier to control.

Keep handles dry, clean, and free from oil and grease.



Monster Group (UK) is one of the UK's fastest growing online retailers. We supply a diverse range of products which offer exceptional value for money. We strive to provide the best possible customer experience with free UK delivery across all our products and a Monster Guarantee for 100% satisfaction.

Our dedicated customer service team will be more than happy to help with any questions you may have.

Home & Garden
Storage Shelving
Sign & Digital
Retail & Hospitality
Commercial Equipment

Check out all our Monster brands at www.monstershop.co.uk
