

# Portable Horse Shower 18L

212157

INSTRUCTION MANUAL

[www.monstershop.co.uk](http://www.monstershop.co.uk)



# SPECIFICATION

## PRODUCT DESCRIPTION

The Monster Portable Horse Shower 18L is an indispensable tool expertly tailored for horse owners! It ensures a comfortable bathing experience, accommodating various sizes. Whether for routine cleaning, post-exercise, or grooming, enjoy consistent water flow and temperature control. Its portability adds convenience, and the 200kg trolley capacity enhances adaptability.

## PRODUCT SPECIFICS

### WATER HEATER

<b>DIMENSIONS:</b>	59cm (H) x 35cm (W) x 15cm (D)
<b>WEIGHT:</b>	2kg
<b>CAPACITY:</b>	18L
<b>WATER PRESSURE:</b>	0.025 - 0.8 mpa (reccomended range)
<b>TEMPERATURE:</b>	0°C to 75°C
<b>BATTERY:</b>	2 pcs D 1.5V batteries (not included)
<b>SAFETY CERTIFICATION:</b>	CE certification

### TROLLEY

<b>DIMENSIONS:</b>	126cm (H) x 53.5cm (W) x 47cm (D)
<b>TROLLEY TUBE THICKNESS:</b>	1.1mm
<b>WHEELS:</b>	10" pneumatic tires
<b>TOE PLATE DIMENTIONS:</b>	35cm (H) x 24cm (W) x 0.3cm (D)
<b>TROLLEY CAPACITY:</b>	MAX 200kg

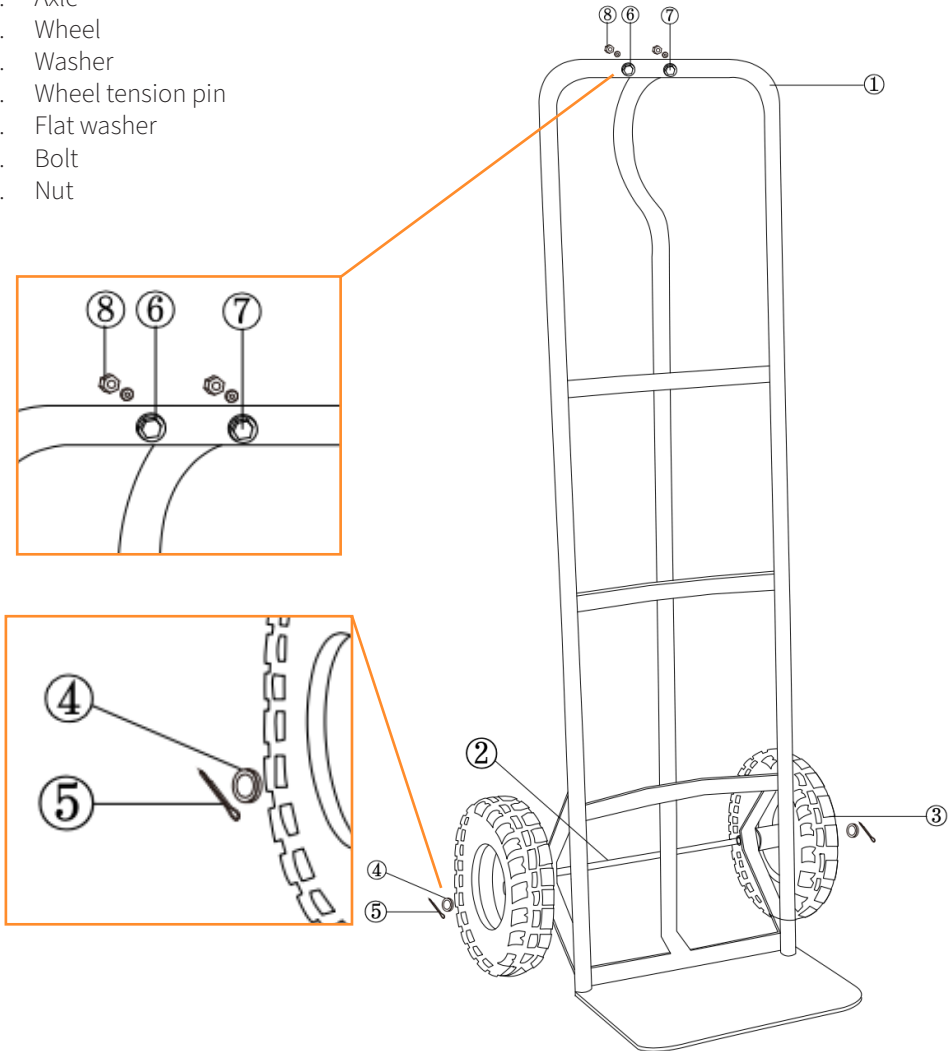
## ITEM CONTENTS

- 1 x Water Heater
- 1 x 10m Outlet Pipe
- 1 x Sprayer
- 1 x Gas Tube
- 2 x Screws
- 1 x Trolley

# SPECIFICATION

## PRODUCT FEATURES

1. Handle
2. Axle
3. Wheel
4. Washer
5. Wheel tension pin
6. Flat washer
7. Bolt
8. Nut

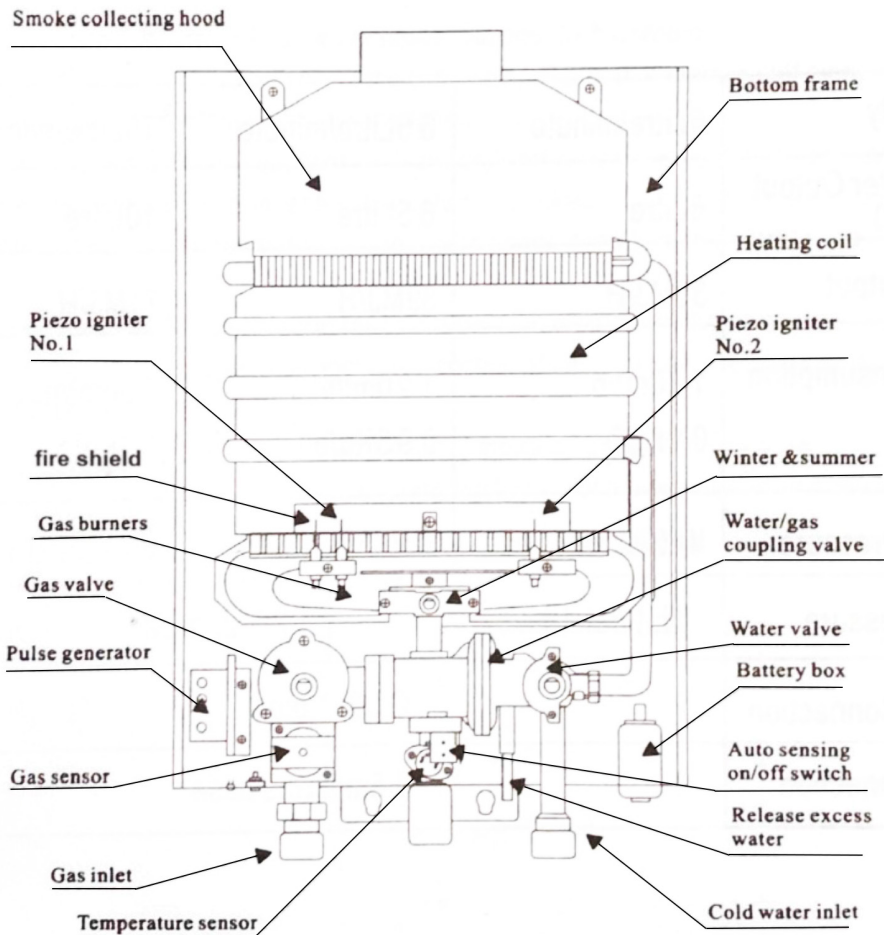


Monster Group UK Limited's liability will be limited to the commercial value of the product only.

# SPECIFICATION

## PRODUCT FEATURES

### WATER HEATER



# SAFETY ADVICE

## SAFE WORKING PRACTICE

- DO NOT use this product for anything other than its intended purposes.
- DO NOT leave children or pets unattended near this product.
- DO NOT touch the burner viewing window while the burner is on.
- Ensure that the water heater and all electrical components always remain dry.
- Avoid exposing the product to water, moisture or damp environments to prevent electrical hazards.
- Follow proper battery installation guidelines and handle batteries with care.
- When adjusting the water temperature and pressure, exercise caution to avoid extremes that may cause discomfort or injury to animals or users.
- Test the water temperature before use to ensure it is suitable for the intended application.
- Load the trolley within its specified weight capacity of 200kg to prevent structural damage or accidents.
- Ensure proper load distribution on the toe plate to maintain stability during transportation.
- Follow the provided assembly instructions to securely attach all components, including the water heater, outlet pipe, sprayer and gas tube.
- Regularly inspect all attachments and connections for signs of wear or damage and address any issues promptly.
- Check the condition of the trolley's wheels before each use, ensuring they are free from damage or debris that could hinder movement.
- Always supervise the use of the Portable Horse Shower, especially when animals are being bathed, to prevent accidents or injuries.
- To prevent gas leakage, always close the main gas supply when heater is not in use.
- Do not cover the heater with any material (for example: towels or cloths).
- In case of gas leakage, always call a qualified technician.
- Check the gas pipe regularly for any damage, as this could cause gas leakage.
- It is recommended to replace the rubber gas tube every six months.

# USER GUIDE

## ! PRECAUTIONS

1. Before using the heater, please read the instructions carefully. Always retain the user manual for future use. It is not only quality but also correct installation which will ensure that your heater works to your satisfaction. The heater must be installed, maintained and checked only by qualified and authorized technicians.
2. The water heater requires plenty of fresh air to work efficiently. Fixed ventilators or air inlets near the heater should never be obstructed or blocked.
3. Check that the gas supply meets the specification (LPG/Natural Gas) given on the heater.
4. Ensure that the water and gas pressure are correct.
5. Do not place the gas water heater near a flammable, explosive or acidic environment.
6. In winter and in freezing temperatures (below 4°C), drain out the water from the heater completely through the drain valve to avoid any damage to the heater.
7. If the water heater is not going to be used for a long time, please drain the water from the heater via the drain valve and remove the batteries from the battery box.

## TECHNICAL DATA

Capacity	8Litre/minute	10Litre/minute	12Litre/minute	16Litre/minute	18Litre/minute
Hot Water Output(T-2525 °C)	8Litre	10Litre	12Litre	16Litre	18Litre
Heat Output	16KW	20KW	24KW	32KW	36KW
Gas Consumption LPG	1KG/H	1.2KG/H	1.5KG/H	1.8KG/H	2.0KG/H
Water Pressure	Min.0.015bar MAX.0.5bar				
Gas Pressure	LPG-28m bar				
Water Connection	G1/2"pipe				
Gas connection	9.5mm (0.37in) Gas hose				

# USER GUIDE

## ASSEMBLY INSTRUCTIONS

1. Fix the wheels on the trolley as shown in the diagram under “Product Features”.
2. Add the gas water heater box on top of the trolley, and keep it in place near the handles of the trolley. Use the provided screws to mount the water heater onto the trolley handles.
3. Ensure the gas and water connection pipes are clean and free of any debris.
4. Connect the gas pipe and the inlet/ outlet water pipes as shown in the diagram under “Product Features”.
5. Insert two D 1.5V in the battery box. Ensure these are thoroughly dry prior to insertion and that they are placed in their corresponding polarities.
6. Before turning the water heater on, always ensure there is no gas leakage from the gas connection.

## OPERATION INSTRUCTIONS

1. Open the water tap. Once water starts flowing, multiple sparks will ignite the main burner.
2. If the burner does not ignite, close the water tap and repeat the process. This can happen due to some air in the gas pipe.
3. To turn it off, close the water tap.

### Gas Regulator Control Button Knob:

- Turn the gas button knob clockwise to increase the gas supply and anti-clockwise to decrease the gas supply to the main burner.

### Water Regulator Control Button Knob:

- To get **hotter** water, reduce the flow rate by turning the button knob clockwise.
- To get **colder** water, increase the flow rate by turning the button knob anti-clockwise.
- The temperature of the water can be controlled by turning the gas control button knob and/ or water control button knob accordingly.

### Summer and Winter Button Knob:

- Regulate the quantity of fire rows by the use of winter-summer switch. In summer, shut off 1/4 fire rows to save 40% energy.

# USER GUIDE

## MAINTENANCE

1. The heater must be maintained and checked only by qualified and authorized technicians.
2. The heater must be checked for safe operation annually, regardless of the frequency of use. This is principally to ensure the correct combustion for the main burner.
3. If the heater is used in an environment with prevalent hard water, in time, a reduction in the hot water temperature or hot water flow may occur. This is due to scale formation.
4. To reduce scaling, it is recommended to use the water and gas control button knob to obtain the desired water temperature, instead of mixing cold and hot water together.
5. Scaling can only be removed by authorised technicians.

# TROUBLESHOOTING

## RESOLUTION GUIDE

### WHAT DO I DO IF THERE ARE MISSING PARTS FROM MY ORDER?

If there appears to be any part missing from your order, contact our friendly and helpful Customer Support Team within 7 days of receipt.

**FOR ALL OTHER ISSUES, PLEASE CONTACT OUR  
CUSTOMER SUPPORT TEAM.**



TROUBLE	CAUSES	REMEDIES
Unsuccessful ignition  Dry cell used up Gas pipe is full of air. Non avail ability of Gas supply Low water pressure (less than 0.3bar)	Main gas cock and/or cold water tap is not opened.	Open main gas cock and/ or cold water tap
	Dry cell used up	Replace batteries
	Gas pipe is full of air.	Repeat the operation
	Non avail ability of Gas supply Low water pressure (less than 0.3bar)	Replace the LPG bottle or inform the natural gas supply that they need to check the water Pressure and increase it
Heater dose not start Fire goes off during operation Abnormal flame and smell Flame turns yellow with smoke Abnormal ignition noise	Water inlet filter is clogged	Clean the filter
	Gas cock is half open	Call the technician
	Gas pressure is too low Blocked burners	Deliver it to the nearest service center