



23292

5 in 1 Master Pan



Try **Monster** - Buy **Monster** - Be **Monster**

Specification

Product Description

The KuKoo 5-in-1 Master Pan is the perfect way to cook your full English breakfast that would normally require more than one pan. The central section is 15-20% hotter making it ideal for cooking meat and fish whilst the outside sections are perfect for vegetables and eggs. Simply preheat the pan for 3 minutes before use.

Made from heavy duty cast aluminium with a non-stick coating makes it easy to cook five different items at once. The non-stick surface means cleaning the pan afterwards is quick and easy.

Item Contents

1 x 5-in1 Master Pan
1 x Fish Slice

Product Specifics

Dimensions: 38 x 30 x 3.15cm
Standard 9.5" (24cm) base plate
Dishwasher safe

Can be used on gas, electric and halogen hobs. (Please note this pan is not compatible with induction hobs.)

Monster Guarantee

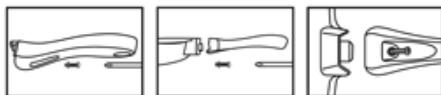
If you wish to return a product in perfect working order, we provide a 30 day returns policy as long as the item is unopened and in a resalable condition. A 12 month warranty applies to all of our electrical products, we will cover labour, parts and delivery charges. Our policy is to try and fix the item before arranging an exchange or refund. For full terms and conditions contact our Support department via the details on the Contact page.

User Guide

Operation Instructions

Handle Assembly / Repair:

If your Master Pan has come with the handle un-assembled or needs replacing then simply take the handle and fit into the clamp and position washer and screw as per pictures shown below and using a standard Phillips head screw-driver tighten properly. Do not over tighten.



Before First Use:

Prior to using your pan for the first time, we recommend you wash it with warm water and a mild detergent, then rinse and dry thoroughly. Apply a little cooking oil over the non-stick surface then wipe off excess oil with kitchen roll. This “seasoning” of the pan will ensure optimum performance over time.

Heating:

Cast aluminium pans do not require you to use a high heat when cooking which, over a period of time, may damage the non-stick coating. Let the pan heat up gradually using a low to medium heat so the heat is evenly distributed over the pan before you start cooking.

Dishwasher Warning:

The base plate will gradually stain and discolor over time after multiple washes. This is normal with most frying pans and will also affect the non-stick coating or the performance of the pan.

Helpful Tips:

To remove white film or water-spotting caused by minerals in tap water try rubbing with a sponge using vinegar or lemon juice.

Damage to your pan due to overheating and improper cooking techniques will void our guarantee.

Contact Us

Sales Department

For information regarding this device or other products from our Monster divisions please use the following details below.

Tel: 01347 878888

Email: hello@monstershop.co.uk

Support Department

For queries about this device, warranty, returns or reporting faults please use the following details below.

Tel: 01347 878887

Email: help@monstershop.co.uk

Website

To view our product range and fantastic offers in the Monster divisions please visit our website

www.monstershop.co.uk

Address

To visit our office Monster House and view our products, send postal correspondence or return items our address is provided below.

Monster House, Alan Farnaby Way, Sheriff Hutton
Industrial Estate, Sheriff Hutton, York YO60 6PG