



23568

Pre-rinse Commercial Tap



Try **Monster** - Buy **Monster** - Be **Monster**

Specification

Product Description

The Pre-Rinse Commercial Tap enhances the performance of the dishwasher function, however it can be used on its own without the need of a dishwasher. It is quick and easy to assemble and can be mounted onto any wall.

This product will come with two FREE tap connectors.

Technical Information

Dimensions: 70cm x 30cm x 10cm

Item Contents

Pre-Rinse Unit:

Faucet

Eterna cartridges with spring checks

Lever handles

Add-on faucet

12" swing nozzle with stream regulator outlet

38" flexible stainless steel hose

9" 1.42 GPM spray valve

12" wall bracket

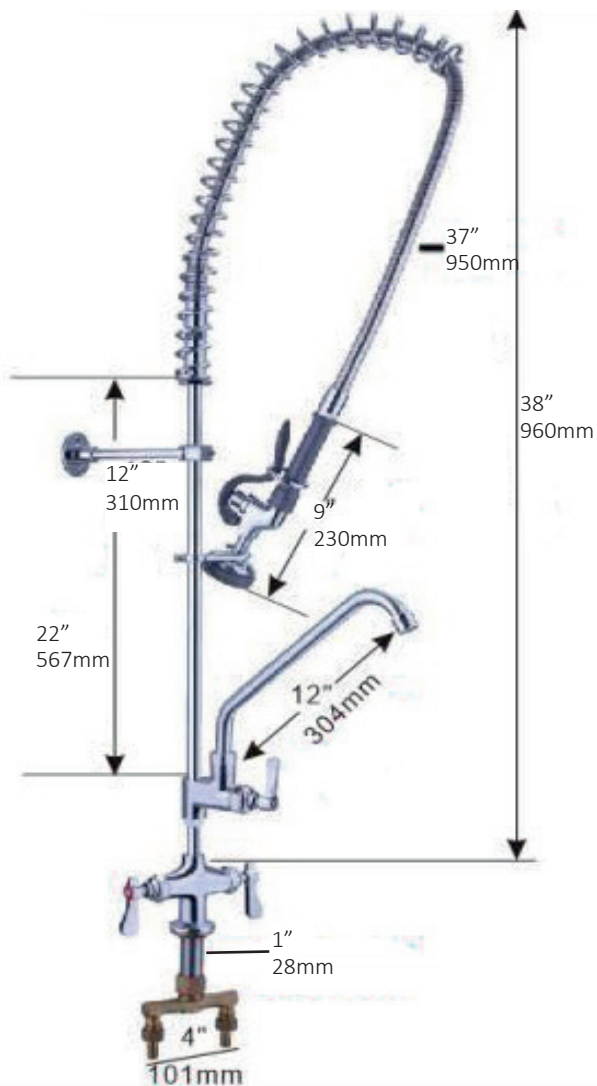
Monster Guarantee

If you wish to return a product in perfect working order, we provide a 30 day returns policy as long as the item is unopened and in a resalable condition.

If for any reason a part is missing please get in touch with us within 7 days on receipt of your order. You can contact our friendly and helpful Customer Support Team via email or call. For full terms and conditions contact our Support Department via the details on the Contact Us page.

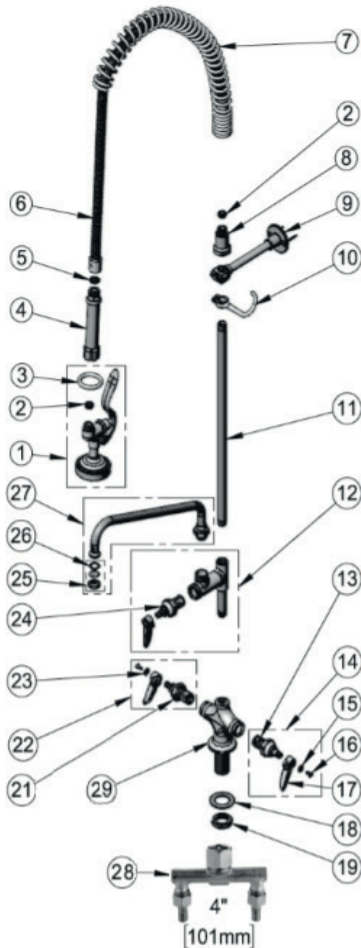
Specification

Product Features



Specification

Product Features



- 1) 1.42 GPM Spray Valve
- 2) #27 Washer
- 3) Spray Valve - Hold Down Ring
- 4) Handle
- 5) Washer- Hose Barrel
- 6) Flexible Stainless Steel Hose
- 7) Spring
- 8) Spring Body
- 9) Wall Bracket
- 10) Finger Hook
- 11) 3/8" NPT x 18" Riser
- 12) Add-on Faucet Nozzle
- 13) Eterna Cartridge, LTC w/ Spring Check
- 14) Eterna Cartridge, LTC w/ Spring Check, Handle, Index & Screw
- 15) Blue Index- Cold
- 16) Screw
- 17) Lever Handle
- 18) Lock washer
- 19) Lock Nut
- 20) Flexible Supply Hose (2) (not pictured)
- 21) Eterna Cartridge, RTC w/ Spring Check
- 22) Eterna Cartridge, RTC w/ Spring Check, Handle, Index & Screw
- 23) Red Index- Hot
- 24) 1/4 Eterna Cartridge, RTC
- 25) Stream Regulator Outlet
- 26) Nozzle Tip Washer
- 27) Swing Nozzle
- 28) Main Body
- 29) Taps- Main Body

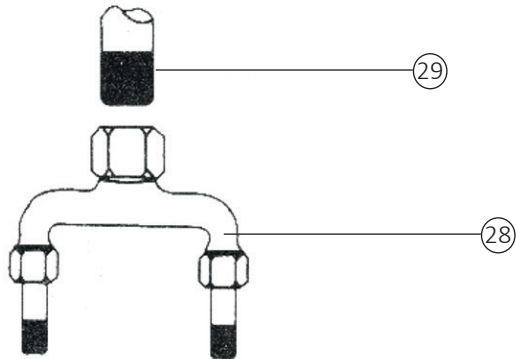
User Guide

Assembly Instructions

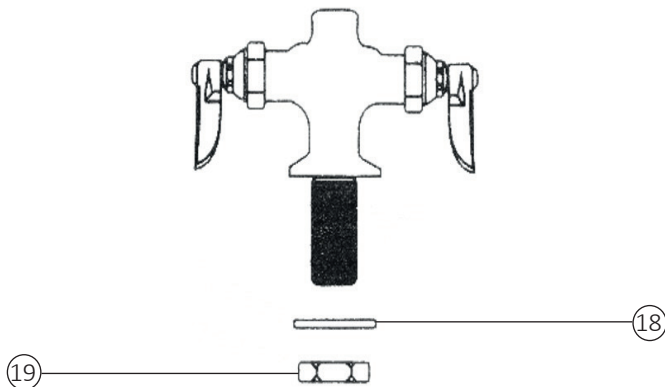
Faucet Installation:

Turn off the water supply before installing this tap.

- 1) Drill a 1/4" hole in the counter top where you are installing the Pre-Rinse Commercial Tap.
- 2) Loosen no. 18 and 19 with a 15/16" wrench. Separate no. 29 from no. 28.



- 3) Remove no. 18 and no. 19 from no. 29.

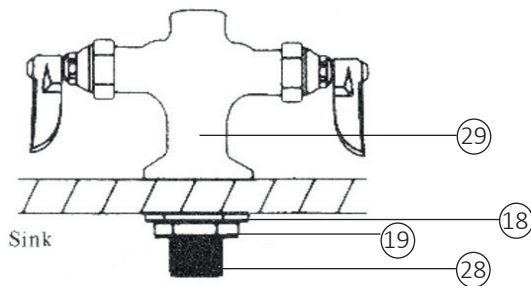


User Guide

Assembly Instructions

4) Place no. 29 through the hole in the sink. Align the hot and cold taps with the sink.

5) Attach no. 18 and no.19 to the bottom of no. 29. Tighten no. 19 and screw no. 28 up onto no. 29. Tighten it by hand and make sure to align the pins on no. 28 with the corresponding holes at the base of the no. 29.



7) Connect the supply lines and check for any leaks.

Pre-rinse Installation:

Turn off the water supply before installing this tap.

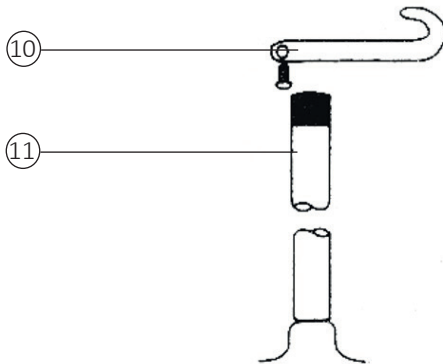
1) Apply PTFE tape or a pipe joint compound to the threads on both ends of no. 11.

2) Screw no. 11 into no. 12 and tighten by hand. Then screw this into no. 29.

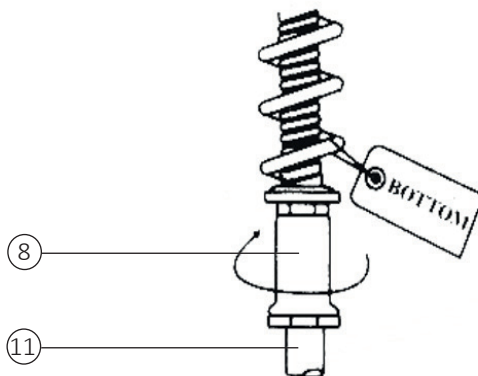
User Guide

Assembly Instructions

3) Slide no. 10 down onto no. 11 (about half way) and tighten temporarily.



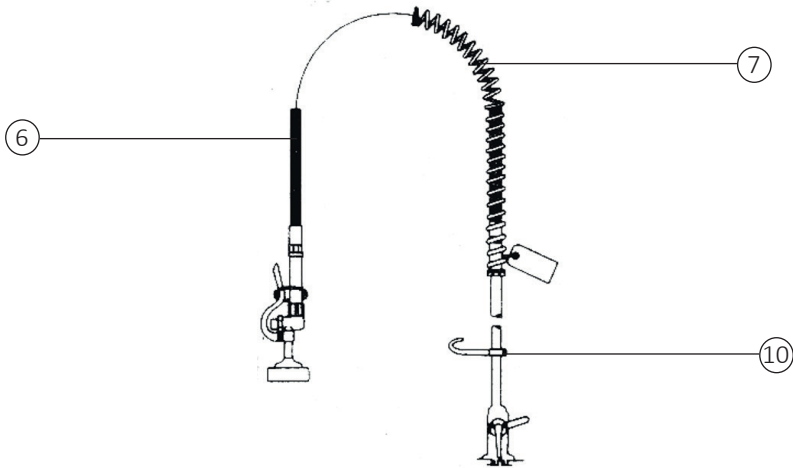
4) Screw no. 8 down onto no. 11. Tighten no. 8 with a wrench- this will consequently tighten no. 11.



User Guide

Assembly Instructions

5) Make sure no. 10 is aligned over the centre of the sink and directly in front of no. 8 when tightening.



6) Adjust the position of no. 10 so that no. 1 hangs loosely in it without straining no. 6 or no. 7.

7) Turn on the water supply and check for leaks.

Troubleshooting

Resolution Guide

Please read through the guide below if you have any issues or faults with your device. The information covers and resolves the majority of frequently asked questions.

Q: There are parts missing from my order.

A: If there appears to be any part missing from your package contact our Customer Support team via the details on the Contact Us page within 7 days of receipt.

For all other issues please contact our Customer Support department via the details on the Contact page.

Safety Advice

Safe Working Practice

Please read through the safe working practice to ensure prevention of injury or damage to the device.

Be careful when using a drill. Make sure all loose clothing and hair is tucked away.

Wear eye protection when using a drill.

Ensure all parts are properly attached before use.



Contact Us

Sales Department

For information regarding this device or other products from our Monster divisions please use the following details below.

Tel: 01347 878888

Email: hello@monstershop.co.uk

Support Department

For queries about this device, warranty, returns or reporting faults please use the following details below.

Tel: 01347 878887

Email: help@monstershop.co.uk

Website

To view our product range and fantastic offers in the Monster Chef division please visit our website

www.monstershop.co.uk

Address

To visit our office Monster House and view our products, send postal correspondence or return items our address is provided below.

Monster House, Alan Farnaby Way, Sheriff Hutton
Industrial Estate, Sheriff Hutton, York YO60 6PG



Monster Group (UK) is one of the UK's fastest growing online retailers. We supply a diverse range of products which offer exceptional value for money. We strive to provide the best possible customer experience with free UK delivery across all our products and a Monster Guarantee for 100% satisfaction.

Our dedicated customer service team will be more than happy to help with any questions you may have.

Home & Garden
Storage Shelving
Sign & Digital
Retail & Hospitality
Commercial Equipment

Check out all our Monster brands at www.monstershop.co.uk
