



23660

T-Mech Mini Garden Tiller



Try **Monster** - Buy **Monster** - Be **Monster**

Specification

Product Description

Ideal for DIY enthusiasts and professional landscapers, this tiller features 4 tines each with 4 teeth, and a high powered engine. The tines can reach 15cm into the soil, ideal for maintaining lawns, borders and vegetable plots.

Equipped with a 52cc petrol engine, a 1.2L tank capacity and combined with a 2 stroke oil mix means your Mini Tiller can be easily operated. The perfect tool for cultivating small to medium sized vegetable gardens and allotment plots.

You will also receive FREE safety wear including: eye and ear protection and gloves.

We at Monster Group UK understand that this is a new and exciting purchase, and although it is tempting to get stuck in, please carefully read these instructions before you start using the machine.

Please Note: The Mini Tiller is designed to be used by a competent adult. The Tiller is designed to only be used on soft ground. Please keep away from any flames during the use of your Mini Tiller. Personal Protective Equipment (PPE) must be worn by the operator of this equipment.

Please refer to and read Safety Advice, Safe Working Practice to ensure prevention of injury or damage to the device before starting.

Technical Information

Power: 1.65kw

Fuel: 2 Stroke Oil Mix- 40/1

Weight: 17kg

Specification

Product Specifics

Dimensions: 90cm L x 54cm W x 98cm H

Engine: 52cc

Tank size: 1.2L

Item Contents

1 x Engine

1 x Right handle

1 x Left handle

1 x Middle handle

1 x Connecting rod

4 x Screw

4 x Handle Fastener

4 x Nut

1 x Multi-tool

1 x Spanner

1 x Screwdriver

2 x Allen Key

3 x Cable Tie

1 x Fuel mixing container

Monster Guarantee

If you wish to return a product in perfect working order, we provide a 30 day returns policy as long as the item is unopened and in a resalable condition.

A 12 month warranty applies to all of our electrical products; we will cover the cost of labour and parts. Our policy is to try and repair the item before arranging an exchange or refund.

If for any reason a part is missing please get in touch with us within 7 days on receipt of your order. You can contact our friendly and helpful Customer Support Team via email or call. For full terms and conditions contact our Support Department via the details on the Contact Us page.

Specification

Product Features

- | | |
|---------------------------|---------------------|
| 1) Right handle | 10) Drag stake |
| 2) Left handle | 11) Tine |
| 3) Middle handle | 12) Cotter Pin |
| 4) Lower handle frame | 13) Mud guard |
| 5) Start/Stop switch | 14) Engine |
| 6) Throttle lever | 15) Fuel Tank |
| 7) Cable Tie | 16) Recoil Starter |
| 8) Wheel | 17) Connecting Rod |
| 9) Wheel adjustment plate | 18) Handle Fastener |



Safety Advice

Safe Working Practice

Please read through the safe working practice to ensure prevention of injury or damage to the device.

Make sure you are wearing sturdy footwear, heavy duty gloves, eye and ear protection. Loose clothing, long hair and jewellery need to be tucked away as they could be caught in moving parts and cause injury.

Do not operate the tiller if you are tired, ill or under the influence of alcohol or drugs.

Petrol is very flammable. Do not use or fuel the tiller anywhere near a flame, sparks or while smoking. Allow the engine to cool before re-fuelling.

Ensure caution when handling fuel. We recommend you fuel the machine at least 3m away from your work area in case any spilt fuel ignites when starting the engine.

Fuel the machine only once you are happy the machine has been completely assembled

Check that you have filled the tank with the correct petrol/oil mix. Never attempt to run this engine using anything other than unleaded petrol.

Carefully inspect the area to be tilled, remove all debris and remove hard or sharp objects such as glass, wire and large stones.

Be aware of the risk of injury to yourself and possible bystanders. Any bystanders, children or pets should be at least 15 meters away as stones and other objects may be thrown up and cause injury.

Inspect the tiller, and in particular the tines, before and after use, for any worn or damaged parts or loose nuts and bolts. Do not use until the parts are re-tightened, repaired or replaced.

Always carry the tiller when the engine has stopped, and never walk away and leave the engine running.

Never lay the hot tiller down on dry grass or any combustible material where there is a risk of fire from the hot engine.

Only use the tiller in good light and visibility. Do not use on frozen ground.

Always shut off the engine before setting it down.



Safety Advice

Safe Working Practice

Unscrew the fuel cap, and fuel the machine to 80% capacity. Fasten the fuel cap tightly avoiding any cross threading and wipe up any spillages. Make sure the tiller is in a horizontal position when fuelling.

If the tiller is not going to be used for long periods, drain the mixture from the fuel tank, start the engine and drain the carburetor of any remaining fuel.

Please take care on slippery/wet ground.

If the tines become locked, please stop the engine. Clean off the debris and start again.

Use only outdoors. The Mini Tiller needs ventilation – the emissions contain carbon monoxide.

Do not overwork the machine.

Maintain proper control of the machine at all times, distractions may cause damage to the machine and/or injury to the user.

Do not transport the machine when it is on.

Never touch the tines when the engine is running, or when accelerating.

Engine should be turned off, cool, and spark plug wire must be removed from spark plug before any repairs are attempted.

Do not pour water on the electrical housing or near the vents.

Avoid getting soil into eyes- wash immediately with plenty of water and seek medical attention.

Keep the Mini Tiller clean to prolong working life.

After turning off the machine, keep your hands away from the tines as they still might be turning after switching off the machine.

Engine should be turned off and cool before you touch any parts of the Tiller. Parts of the Tiller get extremely hot during operation, and they remain hot for a short time after the unit is turned off.

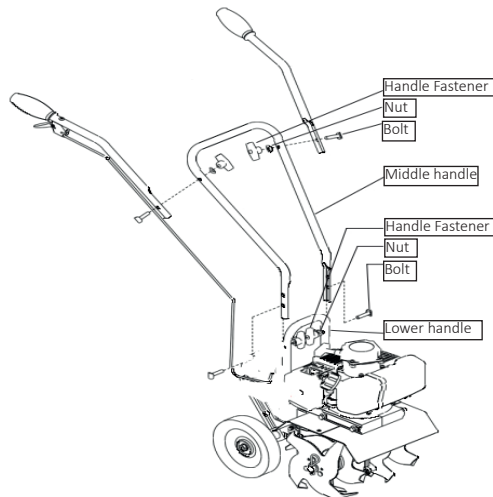


User Guide

Assembly Instructions

Assembling the handles:

1. The handles and middle handle need to be secured in place before the unit can be used.
2. Place the middle handle onto the lower handle frame so that it bends in the direction of the user. Ensure that the holes in the bars of both handle frames are in alignment. Using two screws, two handle fasteners and two nuts, fix the handles together. The handle fasteners can be positioned on the inside or outside of the handles.
3. Attach the left and right handles to the middle handle frame with the remaining two nuts, two screws and two handle fasteners.
4. The connecting rod acts as an additional support to the handle frame. Insert each threaded end of the connecting rod through the corresponding holes in the left and right handles. If fitting the connecting rod is difficult, loosen one of the handle fasteners on the handles.
5. Cap the threaded ends of the connecting rod with the nuts supplied. Ensure everything is securely tightened.
6. Use the cable ties to fasten the cable container to the middle handle frame and the right handle. Make sure the cable container follows the curve of the handle, and that there is no overhang. Do not place tension on the cable.



User Guide

Assembly Instructions

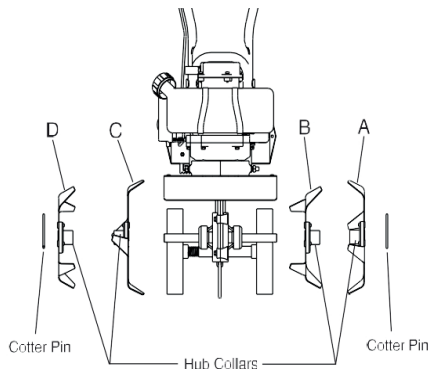
Tine Removal and Installation:

To Remove Tines:

1. Remove the cotter pins from each end of the tine shaft.
2. Slide the four tines off the shaft.

To Install Tines:

1. First slide the inside tines onto each end of the tine shaft. One inside tine should be stamped with a 'B', and the other will be stamped with a 'C'.
2. Slide the outside tines 'A' and 'D' onto each end of the shaft. Make sure that the hub collars on both the left and right pairs of tines face each other, so that there is adequate spacing between the tine blades.
3. Insert the cotter pins into the holes at each end of the tine shaft to lock the tines into place.



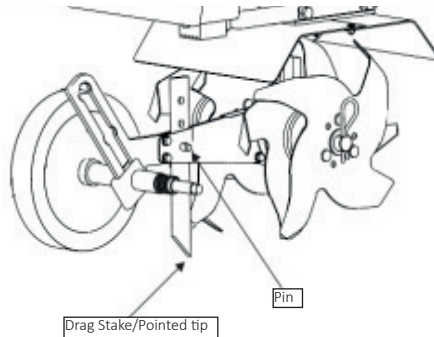
Adjusting the drag stake:

The drag stake is used to regulate the depth of the turning tiller tines. It also serves as a brake, slowing the tiller's forward motion, enabling the blades to penetrate the soil.

User Guide

Assembly Instructions

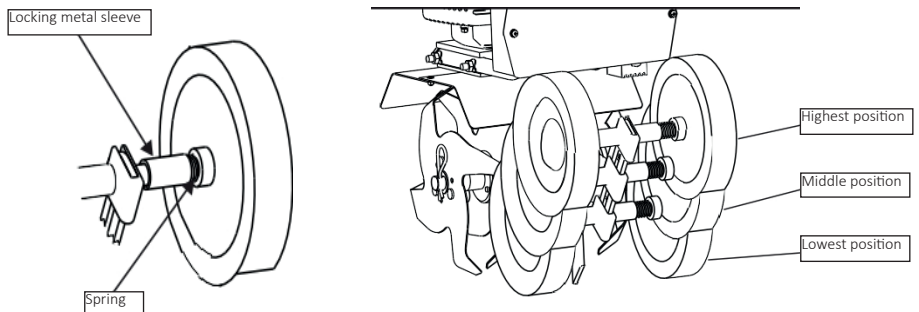
1. Pull the pin out of the drag stake hole.
2. Position the drag stake so the pointed tip is directed downward.
3. Insert the pin into the hole that will achieve the desired depth.



Adjusting the wheels:

The wheels on the Mini Tiller can be adjusted to one of three positions. The lowest wheel position is used to transport the Mini Tiller when the engine is not running. The two higher positions are used when cultivating the soil and help to stabilise the unit when cultivating at different depths.

1. Pull the locking metal sleeve against the spring until the wheel releases from one of the three grooves.
2. Slide the wheel set up or down to the desired position, and release the locking metal sleeve until it locks into one of the three grooves.



User Guide

First Fuelling

The engine will need to be fuelled after assembly and before being operated.

1. Using a fuel mixing container, combine 40:1 - Unleaded Petrol:2 Stroke Lubricating Oil.
2. The fuel mixing container will have level indicators to allow for accurate mixing. Shake the fuel mixing container to combine. It will now be referred to as a 2 Stroke Oil Mix. Fuel must be mixed in a container in a well ventilated area.
3. Open the fuel tank cap. Using a fuel funnel, pour the 2 Stroke Oil Mix into the fuel tank. Once filled to 80% or the indicated level, place the fuel tank cap back on and tighten. Ensure there is also 30-50ml of oil in your gearbox. For instructions on how to do this, see Maintenance Instructions.

Operational Instructions

Move the Mini Tiller to the work area prior to starting the engine.

From Cold:

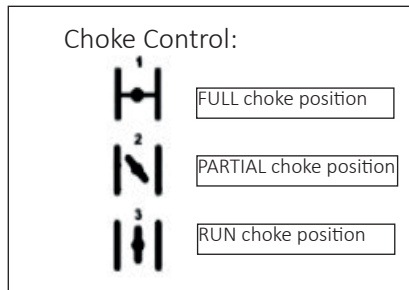
1. Set the Start/Stop switch to START.
2. Set the choke lever (on the left hand side of the engine) to the cold start position (position 1- refer to the opposite page).
3. Press the primer bulb until you see the fuel flow through the transparent hose from the fuel tank to the carburetor.
4. Pull the recoil starter to start the engine. The engine should start after a few pulls.
5. Allow the engine to run for a few seconds and then move the choke lever back towards the run position (position 2). Allow the engine to run for a few seconds and then move the choke lever to the run position (position 3).
6. Squeeze the throttle lever and hold the handle grips firmly as you slowly lower the tiller and the tines make contact with the ground.
7. To stop, release the throttle and turn the start/stop switch to STOP.

From Hot:

1. Follow the exact process as from cold, except keep the choke in the run position (position 3).
2. With the engine running and the tines off the ground, pull up the throttle lever to increase the engine speed.

User Guide

Operational Instructions



Using the Mini Garden Tiller:

1. Move the Tiller to the work area before starting the engine. Transport it by pushing on the wheels and not the tines.
2. With the wheels in the correct position, the engine running and the tines off the ground, gradually increase the engine speed by pulling up the throttle lever.
3. Holding the handlebars firmly, slowly lower the tiller onto the soil. As the tines rotate, tilt the tiller forwards so that the tines can penetrate the soil. Once the ground has been broken, continue at a moderate pace.
4. You can pull the tiller backwards to improve the depth of cultivation.

By manipulating the handle bars, the operator can control the depth and speed of the tiller:

- Pushing down on the handles will allow the drag bar to penetrate the soil and slow the forward motion of the tiller.
- Easing up on the handles and moving the tiller gently from side to side will help to release any tines that are dug in too deeply.
- When turning, push down on the handles to bring the tiller's weight to the rear; this will make turning easier.

After an initial trial of your tiller, you may find you need to adjust the depth of the drag stake and the height of the wheels. Instructions for the adjustment of these elements can be found on the previous pages.

User Guide

Maintenance Instructions

Periodical maintenance is required on the Spark Plug to make sure the Mini Garden Tiller starts correctly. This should also be done before the first use after winter storage, along with a fresh fuel mix.

Spark Plug:

1. The correct air gap should be 0.5mm.
2. Stop the engine and allow it to cool. Using the mutli-tool remove the spark plug.
3. Clean any dirt from around the spark plug. Do not let any dirt enter the cylinder. Re-gap the spark plug using a Feeler Gauge, replace and tighten.

Air Filter:

4. Remove the air filter cover by loosening the socket head cap screws.
5. Remove the sponge air filter from inside and wash it in detergent and water. Rinse thoroughly and make sure it is completely dry.
6. Apply oil to the filter and replace it and the air filter cover. Remember to secure the socket head cap screws.

Body Maintenance:

7. After the first use, check that no screws are loose.
8. After the first use and 20 hours of use lubricate the gear box. To do this, simply unscrew one of the small screws on the gearbox and, using a small funnel or dropper, fill with 30- 50ml of lubricating oil.

Troubleshooting

Resolution Guide

Please read through the guide below if you have any issues or faults with your device. The information covers and resolves the majority of frequently asked questions.

Q: There are parts missing from my order.

A: If there appears to be any part missing from your package contact our Customer Support team via the details on the Contact Us page within 7 days of receipt.

Q: My Mini Garden Tiller will not start.

A: Check that the fuel tank has the correct type and amount of fuel in it. Then carry out the Spark Plug maintenance listed under Maintenance Instructions to see if this solves the problem. If the issue continues, call or email our Support Team via the details on the Contact Page.

Q: I do not think my Mini Garden Tiller is running correctly.

A: Call or email our Support Team, details on the Contact Us page and our friendly and helpful team will listen to any problem and find a resolution. If we can't fix it, we will replace any faulty product up to 12 months of receipt date.

Q: The tines are still slowly operating after the throttle has been released.

A: There may be tension on the throttle cable, move the throttle cable down the handle towards the engine to release tension. However, the engine might be overfilled. This can simply be fixed by turning the carburetor screw anti-clockwise until the engine revs drop and the tines stop.

For all other issues please contact our Customer Support department via the details on the Contact page.

Contact Us

Sales Department

For information regarding this device or other products from our Monster divisions please use the following details below.

Tel: 01347 878888

Email: hello@monstershop.co.uk

Support Department

For queries about this device, warranty, returns or reporting faults please use the following details below.

Tel: 01347 878887

Email: help@monstershop.co.uk

Website

To view our product range and fantastic offers in the Monster Chef division please visit our website

www.monstershop.co.uk

Address

To visit our office Monster House and view our products, send postal correspondence or return items our address is provided below.

Monster House, Alan Farnaby Way, Sheriff Hutton
Industrial Estate, Sheriff Hutton, York YO60 6PG



Monster Group (UK) is one of the UK's fastest growing online retailers. We supply a diverse range of products which offer exceptional value for money. We strive to provide the best possible customer experience with free UK delivery across all our products and a Monster Guarantee for 100% satisfaction.

Our dedicated customer service team will be more than happy to help with any questions you may have.

Home & Garden
Storage Shelving
Sign & Digital
Retail & Hospitality
Commercial Equipment

Check out all our Monster brands at www.monstershop.co.uk
