

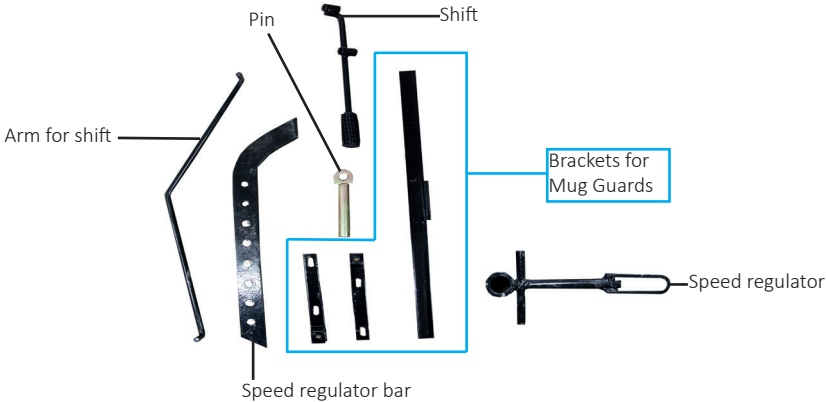


# 7HP Petrol Tiller

## 23780

### Assembly Instructions

This guide is purely for the assembly of the T-Mech 7HP Tiller. Once you have assembled the unit, use the instruction manual for the operation and maintenance of the T-Mech 7HP Tiller. You will find a number of fixings, spare fixings and tools within your package.



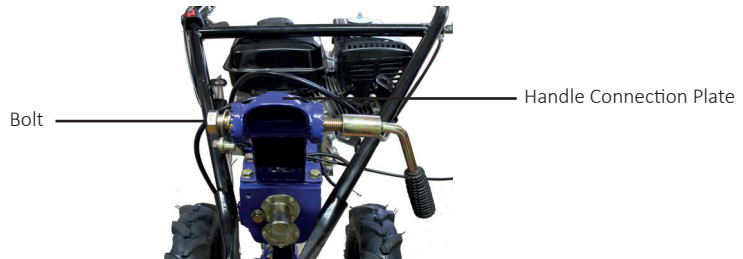
Wheels:

1. Mount the wheels at the end of the hexagonal output shaft on the tiller. Attach the wheels using 1 x pin and 1 x R Clip per wheel.



### Handle:

1. The handle needs to be secured in place before the unit can be used.
2. Remove the bolt from the handle connection plate.

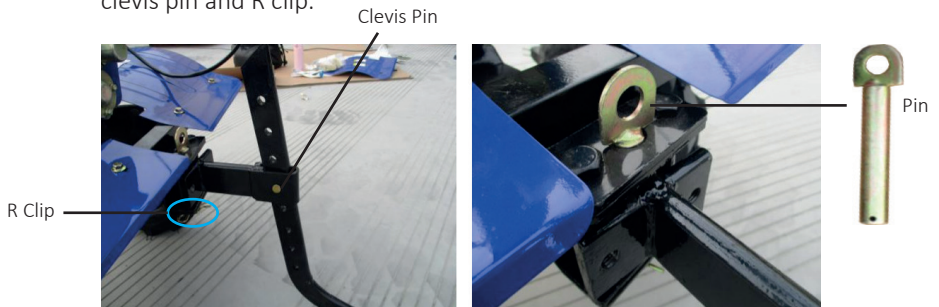


3. Align the handle with the handle connection plate.
4. Put the bolt back through the handle and connection plate.
5. Use the handle adjustment bar to tighten.



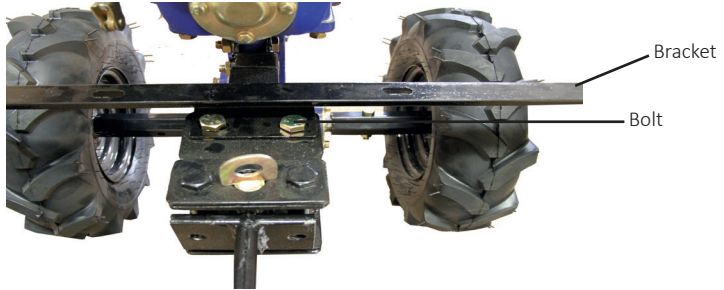
### Speed Regulator and Speed Regulator Bar:

1. The speed regulator attaches to the back of the unit using a large pin. Secure it with an R clip.
2. The speed regulator bar slides into the regulator and secures with a clevis pin and R clip.

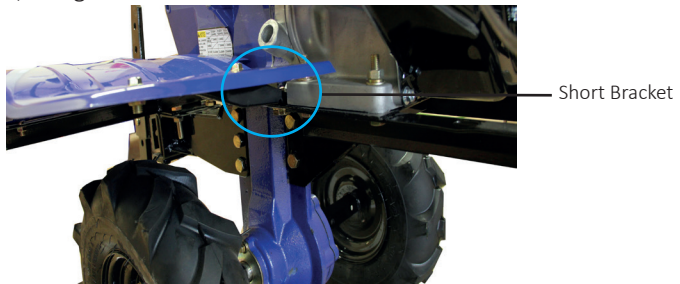


### Mud Guards and brackets:

1. Attach the long black bracket, for the mud guards, to the back of the unit, using 2 x bolts and nuts.



2. Attach the 2 short black attachment bars to the left and right hand side of the tiller, using a small bolt and nut.



3. Attach the blue mud guards to the brackets. Use 4 x bolts and 4 x nuts per each guard.



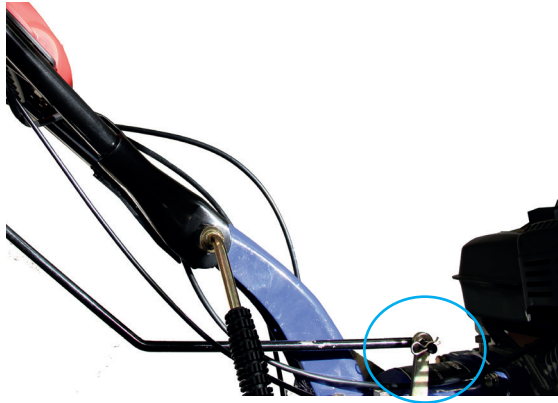
### Tool Box:

1. The tool box needs to be secured onto the handle bars using 4 x bolts and nuts.

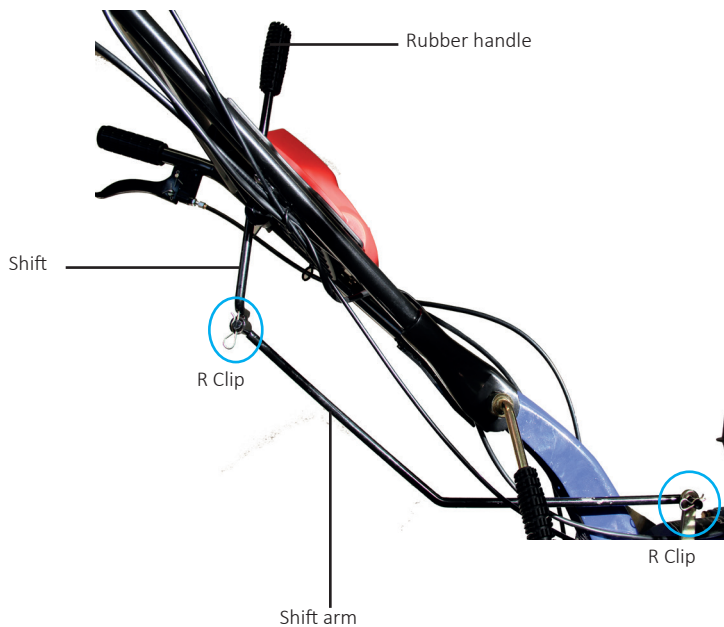


Shift:

1. Insert the shift arm into the gear lever using an R clip.



2. Remove the rubber handle end in order to insert the shift through the tool box.
3. Insert the shift into the shift arm and secure with an R clip.



Tines:

1. Mount the tines onto the tine shaft.



- 3 tines fit onto one square connecting plate. There will be 12 tines per tine shaft.
  - You will need 3 x black bolts, washers and nuts per square connecting plate.
2. Place 1 tine against the connecting plate and then another tine over it. Connect them to the plate using a bolt, washer and nut.



3. Connect the remaining tines using the remaining bolts, nuts and washers.
4. Once all tines are in place, attach the tine shaft to the unit using a pin and R clip per tine shaft. Securely tighten.



# Contact Us

## Sales Department

For information regarding this device or other products from our Monster divisions please use the following details below.

Tel: 01347 878888

Email: [hello@monstershop.co.uk](mailto:hello@monstershop.co.uk)

## Support Department

For queries about this device, warranty, returns or reporting faults please use the following details below.

Tel: 01347 878887

Email: [help@monstershop.co.uk](mailto:help@monstershop.co.uk)

## Website

To view our product range and fantastic offers in the Monster Chef division please visit our website

[www.monstershop.co.uk](http://www.monstershop.co.uk)

## Address

To visit our office Monster House and view our products, send postal correspondence or return items our address is provided below.

Monster House, Alan Farnaby Way, Sheriff Hutton  
Industrial Estate, Sheriff Hutton, York YO60 6PG



---

Monster Group (UK) is one of the UK's fastest growing online retailers. We supply a diverse range of products which offer exceptional value for money. We strive to provide the best possible customer experience with free UK delivery across all our products and a Monster Guarantee for 100% satisfaction.

Our dedicated customer service team will be more than happy to help with any questions you may have.

Home & Garden  
Storage Shelving  
Sign & Digital  
Retail & Hospitality  
Commercial Equipment

**Check out all our Monster brands at [www.monstershop.co.uk](http://www.monstershop.co.uk)**

---