



T-Mech Mortice Jig

24373



Try **Monster** - Buy **Monster** - Be **Monster**

Specification

Product Description

Thank you for purchasing this T-Mech Mortice Jig.

Perfect for locksmiths, joiners and tradesmen, this Mortice Jig is capable of cutting the body and faceplate of locks into wooden doors in as little as five minutes. Robust and precise with self-centring housing and fitted depth collar, this T-Mech Mortice Jig provides a perfect, professional finish every time.

It includes six cutters of different size (2 x 19mm, 2 x 22mm, 2 x 25mm), door clamps, stops, guide blocks, and drive shaft all contained within the handy carrying case, so you'll only need a power drill to begin. This T-Mech Mortice Jig fits doors of 30mm-85mm in depth.

NOTE: The T-Mech Mortice Jig is designed to cut wooden doors. With alternative cutters, it can also cut aluminium doors. These cutters are not included.

We at Monster Group UK understand this is a new and exciting purchase, and although it is tempting to get stuck in please carefully read these instructions before you start using the tool.

Please refer to and read Safety Advice, Safe Working Practice to ensure prevention of injury or damage to the device before starting.

Product Specifics

Dimensions: (H x W x D) 43cm x 20cm x 15cm

Weight: 1.6 KG

Material: Steel rods, cast alloy housing, carbide steel cutters

Standard Shaft fitting: Locks up to 100mm

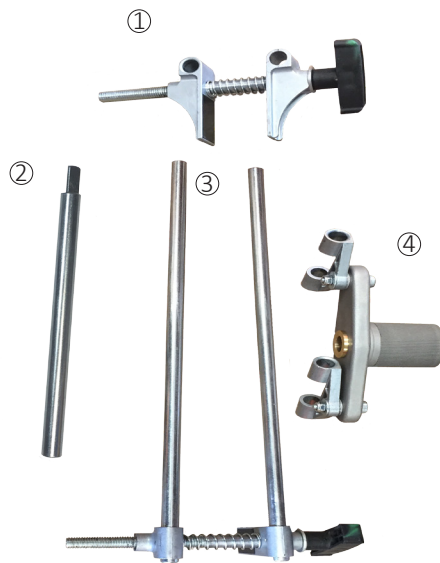
Door fitting: Doors between 30mm-85mm

Required Component: Power drill with 13mm chuck running at 2000-3000rpm

Cutters for wooden doors: 3 sizes of 19mm, 22mm, 25mm

Specification

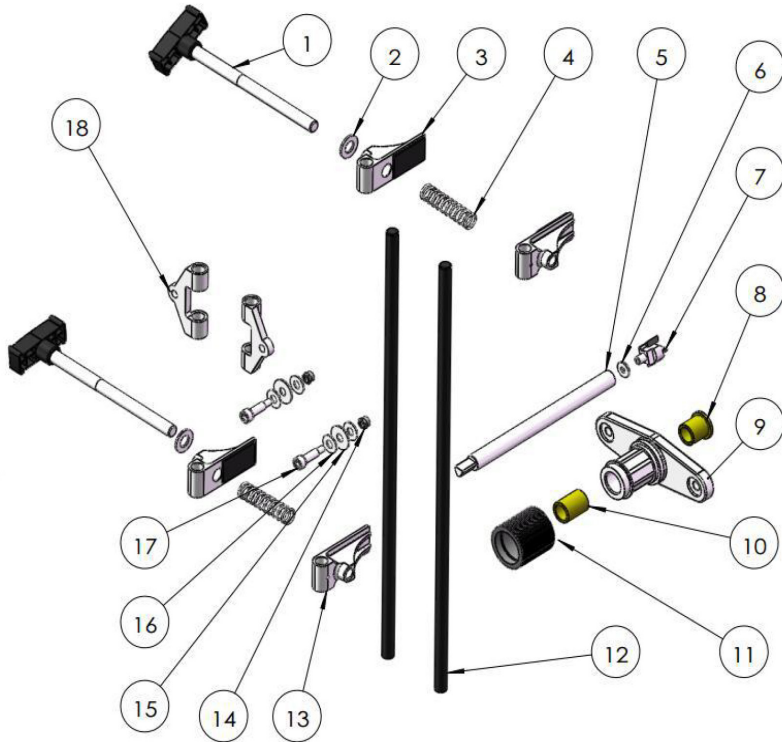
Assembly Components



- 1) Upper Clamp
- 2) Shaft
- 3) Main Frame with Lower Clamps
- 4) Guide

Specification

Full Parts List



- 1) Adjustment Bolt & Handle x 2
- 3) Clamp x 2
- 5) Shaft
- 7) Cutter
- 9) Rod Guide
- 11) Depth Stop
- 13) Clamp
- 15) Washer x 2
- 17) Screw x 2

- 2) Washer x 2
- 4) Spring x 2
- 6) Washer
- 8) Outer Sleeve
- 10) Inner Sleeve
- 12) Guide Rod x 2
- 14) Nut x 2
- 16) Washer x 2
- 18) Guide x 2

Monster Guarantee

If you wish to return a product in perfect working order, we provide a 30 day returns policy as long as the item is unopened and in a resalable condition.

A 12 month warranty applies to all of our electrical products; we will cover the cost of labour and parts. Our policy is to try and repair the item before arranging an exchange or refund.

If for any reason a part is missing please get in touch with us within 7 days on receipt of your order. You can contact our friendly and helpful Customer Support Team via email or call. For full terms and conditions contact our Support Department via the details on the Contact Us page.

Monster Group UK Limited's liability will be limited to the commercial value of the product only.

Safety Advice

Safe Working Practice

Please read through the safe working practice to ensure prevention of injury or damage to the device.

Do not use this Mortice Jig unless you have fully read and understood the instruction manual.

Wear safety boots when commencing the mortice jig process. Always wear safety gloves and goggles whilst using the lock fitting jig and whilst drilling.

Ensure the working area is clear from children and animals.

Do not allow children or inexperienced users to operate a drill or this mortice jig.

Do not use the mortice jig for anything other than its intended purposes.

When operating, ensure the jig is securely fitted to the intended piece of wood.

Store out of reach of children.

Inspect the product for signs of wear and damage before and after every use. If you notice damage, do not proceed to use the product and arrange for repair.

Do not attempt to repair the tool yourself. Only a qualified professional should repair this tool.

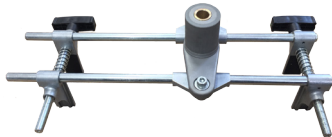
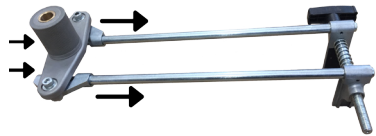


User Guide

Assembly

It is recommended you consult 'Assembly Components'. Familiarise yourself with all the parts prior to assembly.

1. Slide the Guide (4) onto the Main Frame (3) as in Image 1.



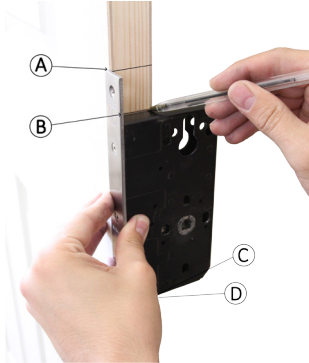
2. Slide the Clamp (1) onto the Main Frame (3) as in Image 2.

3. Place the Shaft (2) through the Guide (4) before attaching the cutter piece and before you attach the mortise jig to the door.



Morticing Wooden Doors

NOTE: There are many helpful guides and how-to videos online. We recommend you read and watch these guides and undertake research before commencing for best results.



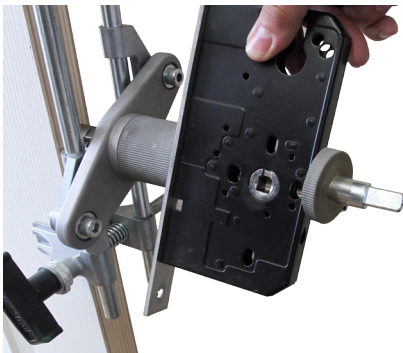
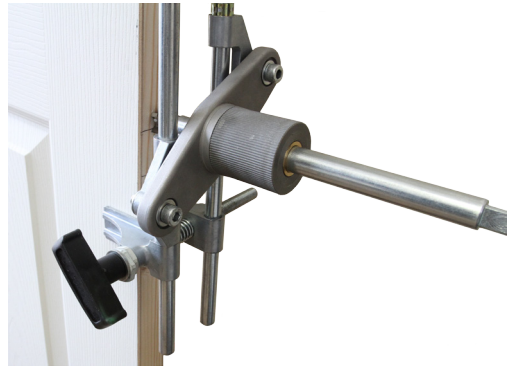
1) Use the lock as a template to mark off the top and bottom edges of the lock body and faceplate. A and D mark the faceplate, B and C mark the lock body.

2) Select an appropriate cutter for the depth of the door and lock body. Screw the cutter onto the shaft.

3) Place the mortise jig to the door edge. Position the jig so that the cutter can move no lower than 5mm below C. Tighten the lower clamps.

4) Position the jig so that the cutter can move no higher than 5mm above B. Use the provided clip to stop the cutter from moving beyond this point. Tighten the upper clamps.

The main frame should now slide up and down from B to C. You will want the cutter to overlap these two points slightly.



5) Place the lock between the guide and the depth stop. This sets the depth to which the cutter will enter the door. Tighten the depth stop with a grub screw.

DO NOT OVERTIGHTEN.

CAUTION: Grease the shaft before you continue. If you do not grease the shaft, it will expand in heat and become jammed.



Equip PPE and connect power.



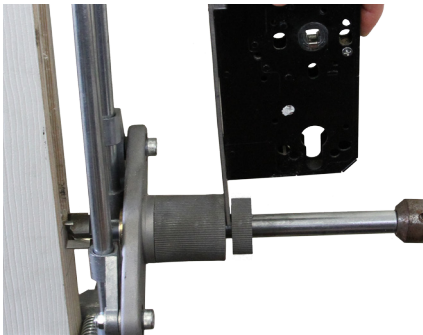
6) Connect an electric drill to the shaft. Place one hand on the guide and feed the cutter into the door. Use a high speed setting on the drill.



Disconnect power.

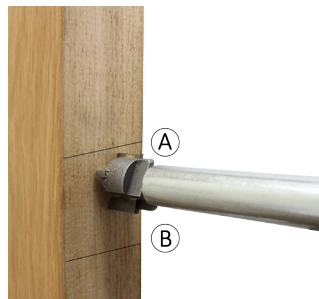
7) Use the spanner provided to unscrew the cutter whilst holding the depth stop. Take care as the jig may be hot.

8) Now that you have cut the hole for the lock, you need to cut a shallower hole for the lock faceplate so that it is flush to the door. Select a cutter that is the same width as your lock faceplate. Push the shaft through the housing and carefully screw the cutter into place until tight.



9) Place the lock faceplate between the guide and the depth stop to mark the depth you will cut.

10) Re-position the jig so that the cutter can move within 5mm of position A and within 5mm of position D. Ensure the cutter cannot cut beyond positions A or D.



Carefully cut the recess so that the faceplate can sit within the door. You will need to square off the recess using a hammer and chisel.

NOTE: The T-Mech Mortice Jig can be used in various other situations. These include morticing metal doors, offset morticing, morticing single holes, using plunging wood cutters, and morticing larger locks, too. For more information, speak with our Customer Service team. The contact details can be found on the 'Contact Us' page.

Maintenance

All maintenance should be carried out by a professional.

- 1) The cutters included are carbide-tipped. Carbide-tipped cutters can be sharpened using a diamond whetstone.
- 2) Screw the cutter onto the shaft. You should only ever sharpen the flat side, never the profile side. When sharpening, use only water as a lubricant. NEVER use oil.
- 3) Glide the cutter along the stone with light to mild pressure. Try to repeat the same number of strokes on both sides. This should be between 5-30 strokes.

You can find useful maintenance tips online.

Troubleshooting

Resolution Guide

This guide aims to cover most of the frequently asked questions or queries concerning this tool.

Q: The guide is loose and/or the cut made in the door is not straight.
A: Tighten the nuts fixing the sliders on the guide. Do not overtighten. Ensure the frame and guide are not binding when the clamps are being adjusted. Check on a spare piece of wood to test.

Q: The shaft is loose when placed through the guide.

A: This may happen over long periods of regular use. Contact our Customer Support team and we may be able to replace the part.

Q: The door is more than 55mm thick and the frame won't open any further.

A: Gently loosen the sliders on the guide housing and spin around. Re-tighten.

Q: How do I fit the lock off-centre to the door?

A: Carefully attach a packing strip or wooden block to the side of the door. Measure up and fit the clamps. You may need another pair of hands to hold whilst you tighten the mortice jig into place.

Q: The guide, sliders, and/or clamps have become difficult to move over time.

A: This is probably caused by a build up of wood dust trapped inside the parts. Pull off the sliders and upper clamp and clean thoroughly. Using grease on the shaft will also help to lubricate.

Q: Is there a faster technique if I want to cut several doors as quickly as possible?

A: We recommend you mark out and cut all the lock bodies first. Nip the spring clip on the upper rod with pliers and use a stopper (if the doors are all the same). Once you have cut all the lock bodies, reposition the spring clip, replace the cutter and cut the faceplates.

NOTE: Though not always possible, we recommend you take as much time as possible with cutting for a precise finish.

For all other enquiries, please contact our friendly and helpful Customer Support department. These contact details can be found on the 'Contact Us' page.

Contact Us

Sales Department

For information regarding this product or other products from our Monster divisions please use the following details below.

Tel: 01347 878888

Email: hello@monstershop.co.uk

Support Department

For queries about this product, warranty, returns or reporting faults please use the following details below.

Tel: 01347 878887

Email: help@monstershop.co.uk

Website

To view our product range and fantastic offers in the ***** division please visit our website;

www.monstershop.co.uk

Address

To visit our office Monster House and view our products, send postal correspondence or return items our address is provided below.

Monster House, Alan Farnaby Way, Sheriff Hutton
Industrial Estate, Sheriff Hutton, York YO60 6PG



Monster Group (UK) is one of the UK's fastest growing online retailers. We supply a diverse range of products which offer exceptional value for money. We strive to provide the best possible customer experience with free UK delivery across all our products and a Monster Guarantee for 100% satisfaction.

Our dedicated customer service team will be more than happy to help with any questions you may have.

Home & Garden
Storage Shelving
Sign & Digital
Retail & Hospitality
Commercial Equipment

Check out all our Monster brands at www.monstershop.co.uk
