



T-Mech English Wheel

24744



Try **Monster** - Buy **Monster** - Be **Monster**

Specification

Product Description

Thank you for purchasing the T-Mech English Mini Wheel.

The hand-operated English Mini Wheel sits in a vice and will shape sheet metal such as mild steel, aluminium, and copper for automotive, motorcycle, and aviation work.

The welded frame ensures minimum deflection of the work-piece during whilst the anvil rack stores six lower anvils of different sizes.

We at Monster Group UK understand this is a new and exciting purchase, and although it is tempting to get stuck in please carefully read these instructions before you start using the machine.

Please refer to and read Safety Advice, Safe Working Practice to ensure prevention of injury or damage to the device before starting.

Product Specifics

Mild Steel Maximum Thickness: Up to 16 gauge (1.519mm)

Aluminium/Copper Maximum Thickness: Up to 10 gauge (2.588mm)

Throat Depth: 390mm

Top Wheel Dimensions: 149mm x 38mm

Lower Anvils Measurements (by radius): 12.7mm, 25.4mm, 38.1mm, 63.5mm, 127mm, 228.6mm

Power: Manual

Overall Dimensions: 534mm H x 635mm D x 51mm W

Weight: 14 KG

Monster Guarantee

If you wish to return a product in perfect working order, we provide a 30 day returns policy as long as the item is unopened and in a resalable condition.

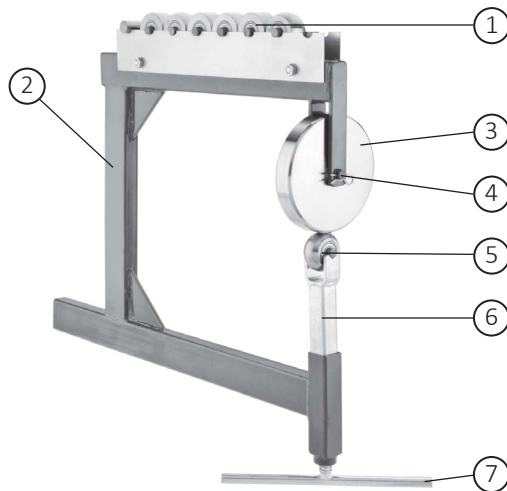
A 12 month warranty applies to all of our electrical products; we will cover the cost of labour and parts. Our policy is to try and repair the item before arranging an exchange or refund.

If for any reason a part is missing please get in touch with us within 7 days on receipt of your order. You can contact our friendly and helpful Customer Support Team via email or call. For full terms and conditions contact our Support Department via the details on the Contact Us page.

Monster Group UK Limited's liability will be limited to the commercial value of the product only.

Specification

Product Features



1: Lower Anvils (ranging from 12.7mm-228.6mm)

2: Frame

3: Upper Anvil (149mm x 38.1mm)

4: Mounting Pin

5: Lower Anvil

6: Lower Anvil Bracket

7: Kick Wheel (adjusts height of Lower Anvil)

Safety Advice

Safe Working Practice

Please read through the safe working practice to ensure prevention of injury or damage to the device.

This product should only be used by a competent person who has fully read and understood this manual.

Ensure assembly is undertaken on a solid, level work surface. When in operation, ensure the tool is firmly fitted to the vice, and that the vice and workbench is also secure and level.

Ensure you have followed carefully the assembly of this product before commencing use. If parts are missing or damaged, do not attempt to fix or use.

Before commencing use, ensure you are wearing PPE (Personal Protective Equipment).

Do not wear loose-fitting clothes or dangling objects such as jewellery. Keep hair, clothing, and gloves safely away from the moving parts.

The tool may create sparks, so it is imperative you carefully consider the location of your workplace. Ensure inexperienced users, children, or pets/animals are not in the vicinity. Ensure the area is clear from clutter, and do not use the tool where there could be a risk of fire or explosion, such as in the presence of liquids or gases.

Do not operate the tool in areas of high temperature or humidity as it may not function correctly.

Only use the tool for its intended purpose. Do not tamper with, amend, or modify the design or parts of the tool.

Do not allow the tool to come into contact with an electrical source as this will cause electrical shocks.

Do not exceed the capacities outlined in this manual. You should fully be aware of and adhere to the maximum thickness of metal that the tool can deal with.

Correct and safe use of the tool requires a great level of concentration. Do not use the tool when you are tired or under the influence of drugs, alcohol or medication.

It is recommended you clean the tool after every use. This will prolong the tool's life and ensure maximum safety to yourself and your surroundings.

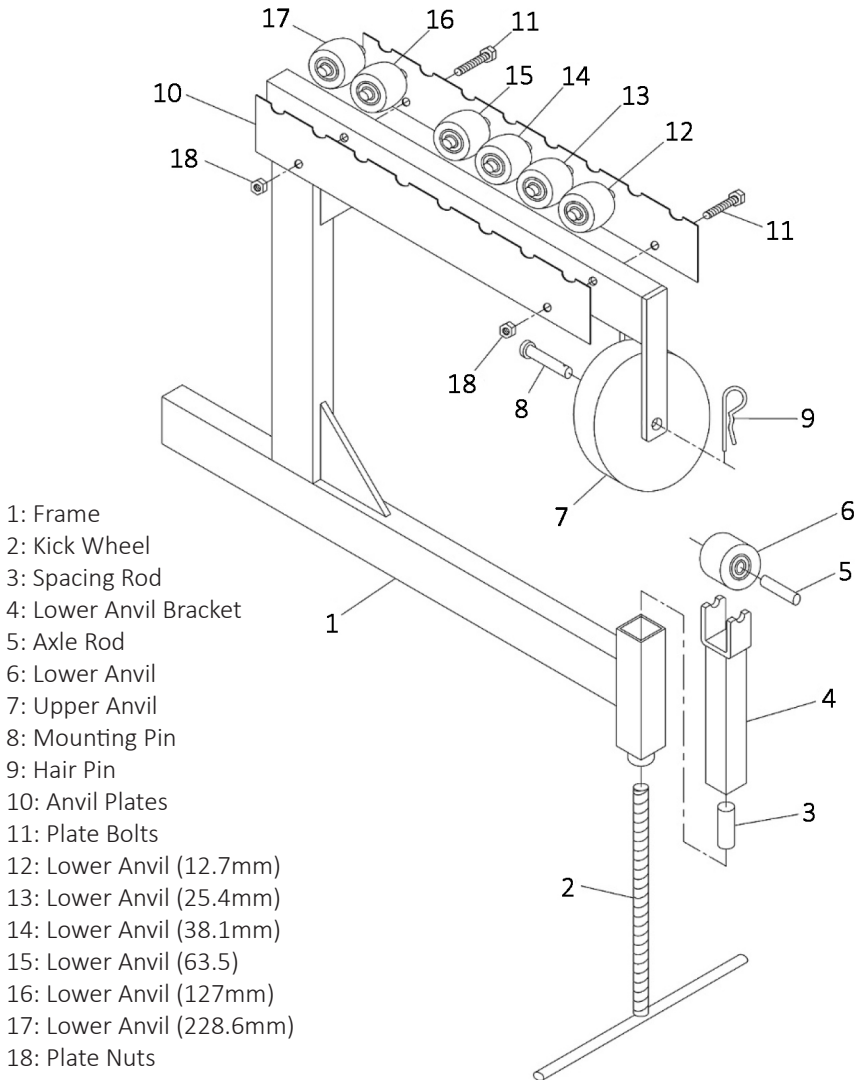
Store out of reach of children in a dry, secure place. Inspect the tool for good working condition prior to storage and before using it again.

Only use accessories that are recommended by the manufacturer. If parts of the tool become worn, contact our Customer Support team via the details on the 'Contact Us' page.



User Guide

Assembly Parts



User Guide

Assembly Instructions

The English Mini Wheel should be assembled on a level surface in a well-lit room. The surrounding area should be clear and free from scraps of metal, dirt, and oil.

For specific part numbers, please refer to 'Assembly Parts' when assembling the tool.

- 1) Insert the Kick Wheel (2) into the bottom of the Frame (1). Install the Spacing Rod (3) to the Lower Anvil Bracket (4). Now attach the Lower Anvil Bracket (4) to the Kick Wheel (2).
- 2) Attach the Lower Anvil (6) to the Lower Anvil Bracket (4) using an Axle Rod (5).
- 3) Attach the Upper Anvil (7) to the upper part of the Frame (1) using the Mounting Pin (8) and Hair Pin (9).
- 4) To the top bar on the Frame (1), attach the Anvil Plates (10) using Plate Bolts (11) and Plate Nuts (18).
- 5) Place the not-in-use Lower Anvils (12, 13, 14, 15, 16, 17) between the Anvil Plates (10).
- 6) Attach your T-Mech English Mini Wheel to a vice, tighten securely, and you are ready to begin.

Operation Instructions

The English Mini Wheel is used to stretch and shape metal work-pieces into thinner, longer, or bend sheet metal as it is rolled between the Upper and Lower Anvil.

- 1) Complete assembly following 'Assembly Instructions' and perform a final safety check.
- 2) If necessary, dull any sharp edges with a de-burring tool (not provided). Ensure you are wearing PPE (gloves, goggles).
- 3) Select the Lower Anvil you require for your operation and place this onto the Lower Anvil Bracket.
- 4) Adjust the position of the Lower Anvil using the Kick Wheel, leaving approximately 1-2 inches between the Upper and Lower Anvils.
- 5) Insert the work-piece between the anvils. Adjust the position of the Lower Anvil using the Kick Wheel until the required pressure is applied to the work-piece.
- 6) Roll the work-piece up to an edge, rotate slightly, and pull it back through. Repeat as you see fit based on your goal, increasing and decreasing the pressure and using the anvils until the work-piece is finished to your requirements.
- 7) If you wish to create curves/ridges, etc. to your work-piece, use the different Lower Anvils provided.

You can find helpful how-to videos on mastering these and other techniques online.

Maintenance

It is recommended that the general condition of any tool be examined before each and every use.

Following the use, maintenance, and safety tips found in this manual, and undertaking individual research on the use of English Wheels, will retain the overall quality you see in your English Mini Wheel.

Keep the handles dry, clean, and free from oil and grease.

Keep the anvils free from oil and dirt as this can be pushed into the metal as it is shaped which may not be remediable.

Top-up the oil cup periodically to keep the machine working correctly. Be careful not to fill with too much oil.

Troubleshooting

Resolution Guide

Please read through the guide below if you have any issues or faults with your device. The information covers and resolves the majority of frequently asked questions.

Q: There are parts missing from my order.

A: If you notice there are parts missing from your order, or if any part is damaged, do not attempt to use the item. Contact our friendly and helpful Customer Support team via the details on the 'Contact Us' page of this manual.

Q: The anvils won't shape/stretch my work-piece.

A: Ensure the sheet metal you have chosen is not thicker than specified in this manual. These maximum thickness specifications should be strictly adhered to.

Q: The Upper and/or Lower Anvil is loose when I insert my work-piece.

A: Consult the Assembly Instructions section of this manual. Ensure you have carefully followed each step. It may be that you have to tighten all parts to ensure the whole tool is tight. You should also check that the vice is tightly holding the frame and there is no give.

For any and all other queries, please contact our Customer Support department via the details on the 'Contact Us' page of this manual.

Contact Us

Sales Department

For information regarding this product or other products from our Monster divisions please use the following details below.

Tel: 01347 878888

Email: hello@monstershop.co.uk

Support Department

For queries about this product, warranty, returns or reporting faults please use the following details below.

Tel: 01347 878887

Email: help@monstershop.co.uk

Website

To view our product range and fantastic offers in the MonsterShop division please visit our website;

www.monstershop.co.uk

Address

To visit our office Monster House and view our products, send postal correspondence or return items our address is provided below.

Monster House, Alan Farnaby Way, Sheriff Hutton
Industrial Estate, Sheriff Hutton, York YO60 6PG



Monster Group (UK) is one of the UK's fastest growing online retailers. We supply a diverse range of products which offer exceptional value for money. We strive to provide the best possible customer experience with free UK delivery across all our products and a Monster Guarantee for 100% satisfaction.

Our dedicated customer service team will be more than happy to help with any questions you may have.

Home & Garden
Storage Shelving
Sign & Digital
Retail & Hospitality
Commercial Equipment

Check out all our Monster brands at www.monstershop.co.uk
