



COMPOSITE BOARDS

25881/25883/25882/25021

INSTRUCTION MANUAL

www.monstershop.co.uk



SPECIFICATION

PRODUCT DESCRIPTION

Thank you for purchasing our Composite Boards, they are ideal for any size and style of outdoor space. Not only are they durable, they are also low maintenance and easily cleaned. We hope they transform your outdoor space.

Please Note: The Composite Boards are designed to be installed by two competent persons. Personal Protective Equipment (PPE) must be worn by the fitter of these boards.

Please refer to and read the Safe Working Practice to ensure prevention of injury or damage to the device before starting.

PRODUCT SPECIFICS

MATERIAL: WPC (Wood Plastic Composite)
BOARD WIDTH: 150mm
BOARD LENGTH: 2900mm
SQM: 2.177sqm
COLOUR: Conker Brown or Castle Grey

ITEM CONTENTS

5/7 x WPC Decking Boards
1 x WPC Joist
100 x Stainless Steel Screws with T-Clips
1 x End Covers

ACCESSORIES (SOLD SEPARATELY)

1 x Starting Clips
1 x Plastic Expansion Screws
1 x Stainless Steel Clips

Monster Group UK Limited's liability will be limited to the commercial value of the product only.

SAFETY ADVICE

SAFE WORKING PRACTICE

Please read through the Safe Working Practice to ensure prevention of injury or damage to the device.

Do not use this product for anything other than its intended purposes.

Ensure you have read and fully understood the instruction manual and safety advice before using this product.

Do not apply bodyweight to this product before it is installed.

Keep small parts away from children.

Ensure this product is fitted correctly.

Use this product on a flat surface.

Do not expose this product to fire.

Do not allow this product to get excessively hot.

RECOMMENDED TOOLS

- 1 x Circular Saw
- 1 x Hand Drill
- 1 x Screwdriver Bit
- 1 x Twist Drill Bit

USER GUIDE

ASSEMBLY INSTRUCTIONS

Please Note: Before installing the Composite Boards, ensure the concrete is at least 10cm thick, and that it is also clean and dry.

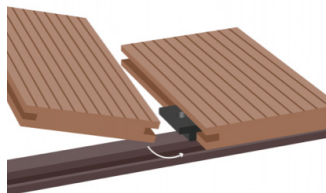
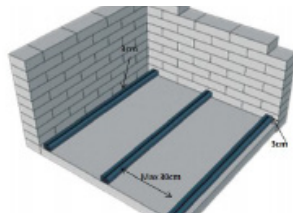
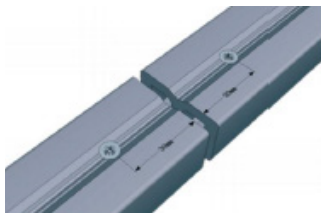
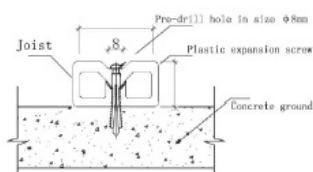
Please Note: Make sure there is sufficient drainage on the site to avoid water collecting underneath the boards after installation; we recommend laying the concrete with a slight incline to ensure drainage.

Please Note: Decking Boards must not be laid directly on the ground, but should be fixed to the supplied WPC joists.

Please Note: We suggest to install the Composite Boards in temperatures under 25° and avoiding exposure to the hot sun to reduce the influence of thermal expansion and contraction.

1. The WPC joists need to be fastened to the concrete base using screws through the joists and into the concrete base with plastic raw plugs. The joists should be at least 30cm apart and parallel to each other, in-line with the slope of the concrete base, this is to allow for easy drainage. When laying the joists, leave at least a 3cm gap between the end of the joist and a solid structure, such as a wall, again, to allow for easy drainage.

Please Note: The maximum distance between two joists should be 30cm. Leave at least 3cm gap between the end of the joist and a solid structure, such as a wall.



2. Start laying your decking boards at the outside of the area to be decked. Place your first board and screw it into each joist it crosses using a row of starter clips. Then fit T-Clips into the groove along the side of the board and screw them into each supporting joists with the screws provided, one T-Clip for each supporting joist.

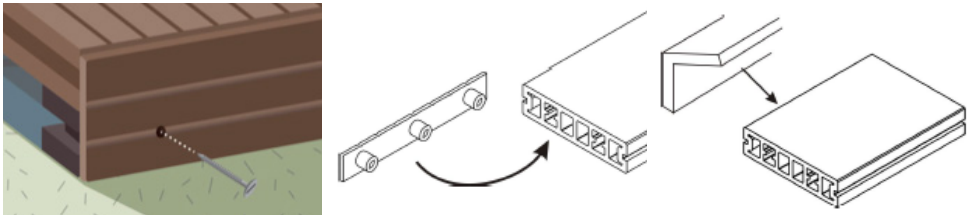
USER GUIDE

ASSEMBLY INSTRUCTIONS

- Fit your next board by sliding it into the T-Clips used to secure this first board, then fit another set of T-Clips to secure the opposite side of the board, again, one T-Clip for each supporting joist.

Please Note: Leave a gap of at least 5mm between each board to allow for expansion due to temperature changes and for sufficient drainage.

- Follow a similar process to fix subsequent boards, attaching the final board in a similar manner to your first: using starter clips.
- To finish the decking, either use an end cover to slot into the deck boards, or, use another piece of board to use as skirting. This can be screwed directly into the side of the joist with screws. Another type of finish is a piece of 90° skirting.



Please Note: We recommend that you do not fully close your decking to allow for the free movement of air and water for drainage.

USER GUIDE

MAINTENANCE

WPC Composite Boards need to be kept away from high temperature equipment, such as heaters and grilling apparatus, as this can cause discoloration, deformation and damage. Never let kerosine, petrol or other organic solvents come into contact with your deck.

We recommend when using a barbecue or fire pit on the decking, that there be a surface between them, and that the item is secure and does not wobble or move. Be careful when removing hot embers or ash from the decking as the decking will be hot also after coming into contact with the embers.

We also advise not to drag furniture or plant pots across the decking, dropping heavy items onto the deck, such as large plant pots, trees etc, items with metal feet should have suitable material between them and the decking to avoid damaging the deck.

Do not use corrosive or strong chemicals, such as bleach, when cleaning.

If your decking becomes dirty due to mildew, mould and debris, follow these simple steps to clean and maintain the boards:

1. Use a broom to remove excess debris and leaves, a hard bristled brush is best as this will also remove any accumulations of moss, algae and smaller leaves.
2. Mix composite board cleaner or mild detergent into a bucket of hot water.
3. Apply the hot soapy water to the decking and use the hard-bristle brush to scrub the surface of the decking.
4. Leave the hot soapy water on the decking for a few minutes before rinsing off with more warm water. Ensure all cleaning fluids and debris has been removed before leaving the decking to dry.

With routine cleaning, mould and mildew can be minimized, however, they are a common environmental condition. Sweeping and removing leaves often will help reduce the mould and mildew growth.

The above cleaning method should be used for all types of stains, such as wine, berries, oil and grease, although, not all stains will be removed.

A pressure washer is safe to use on the WPC Composite Boards.

TROUBLESHOOTING

RESOLUTION GUIDE

WHAT DO I DO IF THERE ARE MISSING PARTS FROM MY ORDER?

If there appears to be any part missing from your order, contact our friendly and helpful Customer Support Team within 7 days of receipt.

WHAT DO I DO IF THERE IS A BUILD UP OF MOULD OR MILDEW?

Follow our step by step cleaning guide in the Maintenance section. We recommend the decking is cleaned regularly to ensure the mould or mildew does not leave any discoloration or damage.

WHAT DO I DO IF MY DECKING IS BOWING?

This could be down to a number of reasons: the joists are more than 30cm apart, there is a build up of water underneath the joists and this has weakened them, or something heavy has been dropped on the decking in between the joists.

If the joists have been laid more than 30cm apart, then this needs to be rectified in order to make the decking safe.

If you think there is a build up of water, drain the water fully from underneath the deck, then assess the the dipped area to see if the joist needs replacing.

If something has been dropped, then this may have damaged the board permanently.

WHAT DO I DO IF THERE IS A STAIN ON THE DECKING?

Follow our step by step cleaning guide in the Maintenance section as soon as you spot the stain as this will help the removal. Unfortunately, not all stains can be removed.

WHAT DO I DO IF HOT EMBERS LAND ON THE DECKING?

The quicker the hot embers can be removed from the decking, the better, as more damage can be done if the embers are left to cool on the decking. Remove the hot embers or ash safely, if the decking is visibly still hot, cool it with water. Allow the decking to cool completely before cleaning with composite board cleaner or a mild detergent and warm water. Cleaning will only try to remove the ash or burn marks, if the decking has melted or has discoloured, then this will be permanent.

**FOR ALL OTHER ISSUES, PLEASE CONTACT OUR
CUSTOMER SUPPORT TEAM.**

Monster Group (UK) is one of the UK's fastest growing online retailers. We supply a diverse range of products which offer exceptional value for money. We strive to provide the best possible customer experience with free UK delivery across all our products and a Monster Guarantee for 100% satisfaction.

For information regarding this device or other products from our Monster divisions please contact Sales.

SALES

TEL: 01347 878 888

EMAIL: hello@monstershop.co.uk

For queries about this device, warranty, returns or reporting faults please contact Support.

SUPPORT

TEL: 01347 878 887

EMAIL: help@monstershop.co.uk

Pour plus d'informations concernant cet appareil ou d'autres produits de nos divisions de Monster veuillez utiliser les détails suivants ci-dessous.

DÉPARTEMENT COMMERCIAL

TEL: 01347 878 888

EMAIL: bonjour@monstershop.eu

Pour les interrogations concernant cet appareil, la garantie, les retours ou les défauts de déclaration veuillez utiliser les détails suivants ci-dessous.

DÉPARTEMENT DE SOUTIEN

TEL: 01347 878 887

EMAIL: help@monstershop.co.uk

Para información sobre este dispositivo u otros productos de nuestras divisiones de Monster por favor use los siguientes detalles.

DEPARTAMENTO DE VENTAS

TEL: 01347 878 888

EMAIL: hola@monstershop.eu

Para consultas sobre este dispositivo, la garantía, devoluciones o denuncias de fallos por favor use los siguientes detalles.

DEPARTAMENTO DE SOPORTE

TEL: 01347 878 887

EMAIL: help@monstershop.co.uk

Für Informationen bezüglich dieses Geräts oder anderer Produkte aus unserer Monster-Abteilung, benutzen sie die folgenden unten aufgeführten Angaben.

VERKAUFABTEILUNG

TEL: 01347 878 888

EMAIL: hallo@monstershop.eu

Für Fragen über dieses Gerät, die Garantie, Rückgaben oder bei Störungen, benutzen sie die folgenden unten aufgeführten Angaben.

SUPPORT-ABTEILUNG

TEL: 01347 878 887

EMAIL: help@monstershop.co.uk

Per informazioni riguardanti questo dispositivo o altri prodotti dalle categorie Monster utilizzare i dettagli sotto riportati.

DIPARTIMENTO VENDITE

TEL: 01347 878 888

EMAIL: ciao@monstershop.eu

Per domande riguardo dispositivo, garanzia, reso o per riferire di guasti, utilizzare i dettagli sotto riportati.

DIPARTIMENTO SUPPORTO

TEL: 01347 878 887

EMAIL: help@monstershop.co.uk

Monster House, Alan Farnaby Way,
Sheriff Hutton Industrial Estate,
Sheriff Hutton, York, YO60 6PG
www.monstershop.co.uk



 Try **Monster**. Buy **Monster**. Be **Monster**. 