

# POST HOLE DIGGER



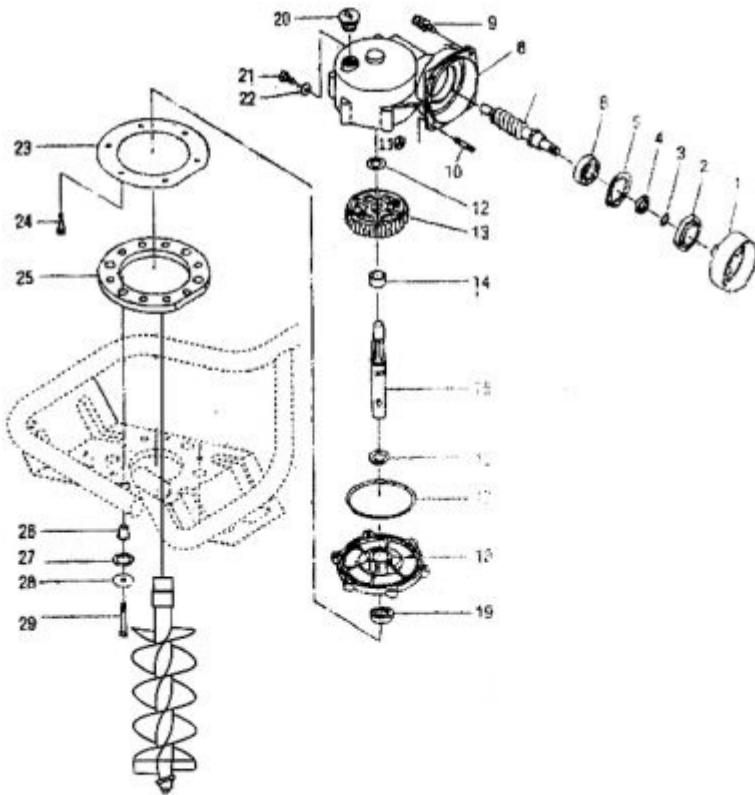
**CAUTION!**  
Please read this manual carefully before  
operating this planting machine.

S/N	Parts name	Specifications	QTY	S/N	Parts name	Specifications	QTY
1	Clutch plate		1	17	O seal	100×1.8	1
2	Frame oil seal	Φ47×20×8	1	18	Worm wheel crankcase cover		1
3	Washer 1		1	19	Frame oil seal	Φ35×20×10	1
4	Washer 2		1	20	Fuel cap bolt		1
5	Spring washer	Φ47×1.5	1	21	Hexagonal bolt	M5×12	1
6	Bearing	Φ47×20×14	1	22	Washer	Φ12×Φ6.5×1	1
7	Worm wheel		1	23	Rubber pad(1)		1
8	Worm wheel crankcase		1	24	Inner Hexagonal bolt	M6×16	6
9	Hexagonal bolt Spring washer		Each 3	25	Rubber pad(2)		1
10	Stud bolt		1	26	Separate sleeve		5
11	Nut	M8	1	27	Waveform washer		10
12	Worm wheel wash		2	28	Washer		5
13	Worm wheel		1	29	Inner Hexagonal bolt	M6×25	5
14	Sleeve		1	30	Drill pipe		1
15	Worm wheel shaft		1	31	Shaft(Pin)		1
16	Washer		1	32	split pin		1

# Owner's manual

4	Handle	∅38×25	1
5	Fuel supply control switch		1
6	Connection plate		1
7	Bolt	M12×20	2

## PARTS LIST

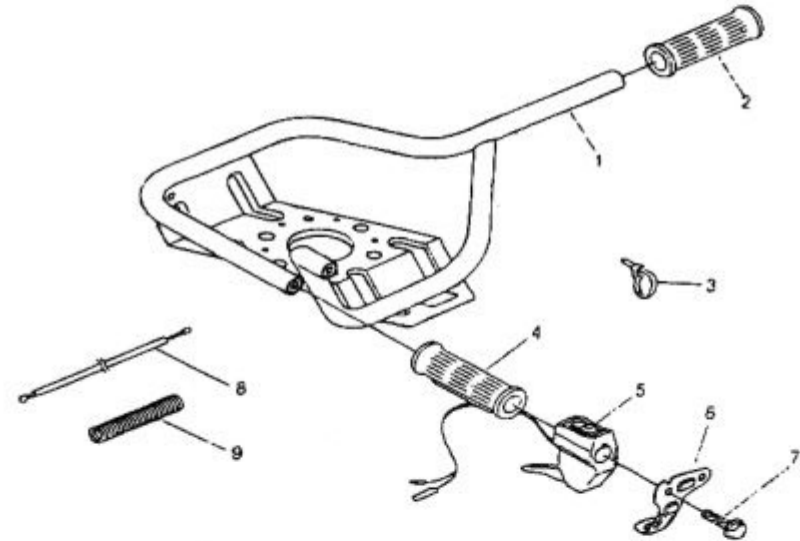
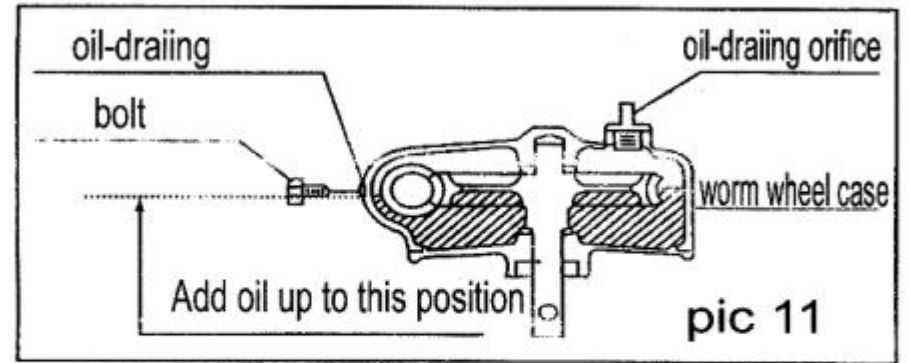


**Dear User,**

Thank you for purchasing Planting machine which manufactured by our company. This Owner's manual describes the operation, installation and maintenance of the Planting machine. Please make sure completely understand all details which describes in this manual before operate this Planting machine. All information in this manual is based on the latest product information available at the time of printing. Specifications are subject to change without additional notice.

**INDEX**

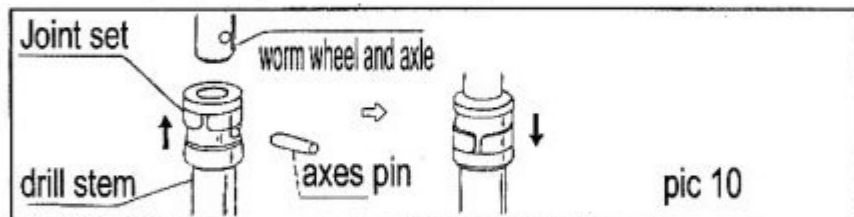
- A. SAFETY OPERATION MESSAGE
- B. COMPONENTS NAME & SPECIFICATIONS.
- C. INSTALLATION
  - 1. TRANSMISSION CASE & ENGINE
  - 2. CONNECTING ENGINE SWITCH WITH TRANSMISSION CASE
  - 3. ENGINE SWITCH CONNECTIONS
  - 4. DRILL BIT & GASOLINE ENGINE
- D. OPERATION NOTICE
- E. GASOLINE ENGINE
- F. MAINTENANCE. CHECKING. STORAGE



S/N	Parts name	Specifications	QTY
1	Handle holder	Φ25	1
2	Handle	Φ35×25	1
3	Lock catch		1

#### 4. Drill bit and transmission case(pic 10)

- (1). Remove the clip by slip upside,then remove the pin.
- (2). Make sure the gear shaft inline with drill bit shaft
- (3). Insert the pin again,slip downward cover the pin.



### D Operation Notice

#### 1. Checking

- (1). Check each parts,make sure that each parts didn't loss and missing,pay more attention for the spark plug.
- (2)Check if there are block exist in the intake pipe and exhaust pipe.The planting machine powered by air-cooled gasoline engine,if the air flow have been blocked,the engines will be overheat.
- (3)Check if there are dust exist in air cleaner.Please note that if using dirty air cleaner,it will casue higher fuel consumption.
- (4)Check if the spark plug damaged.

#### 2. Refuel

- (1)After the first 50-hours operating,please replace all lubricating oil.Every 100-hours operating time,replace lubricating oil when the transmission case getting heat.

(pic 11)

- (2)Fill in 250cc gasoline.(Lubricating oil SAE80-90 )

- (3)When refueling,make sure that the fuel never over the exhaust port.Aim to get proper fuel level,upright the planting machine is recommended,as it helpful for checking the fuel level.

### the main use of terra drill of planter:

Gasoline planter is designed for drilling and grubbing of yam and burdock planting holes, holes of radio detector, holes of fencing poles, holes of shed poles, sapling planting holes, holes of cableway marking poles, landmark noticing holes, holes of tree fertilizing and winter whiffing on the ice, ect..

**Remark:** users can request to collocate the various drill stems with different diameter with earth quality, humidity, using experience and specification of the drill stem.

### A. SAFETY OPERATION MESSAGE

**Your safety and the safety of other is very important.In order to ensure others and you's safety,it is necessary for you read this manual carefully before operating this plant machine.**

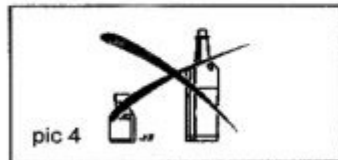
#### General knowledge:

Please consult the instruction manual before practice, and make sure to follow the manual strictly, to avoid the injury from the incorrect use. (pic 1)

- a、 Highly recommend to supply this machine to experienced users, plus instruction manual.
- b、 The fresh users ought to consult distributor for the general knowledge and explain to get familiar with the planter's capability and operation.
- c、 Under-18-year-old are strictly prohibited of the using of this machine.
- d、 Full attention and gingerliness are requested for using of this machine.
- e、 Users must be in the state of regain consciousness while operation, and

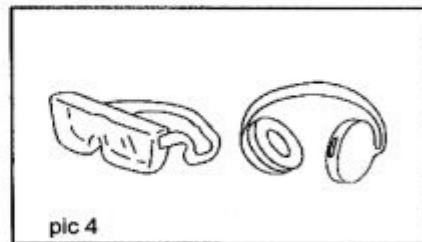
please also mind the people around.

- f. Utterly prohibited the using of this machine after drinking, drug-taking or in the stat state of tiredness and sickness. (pic 2)



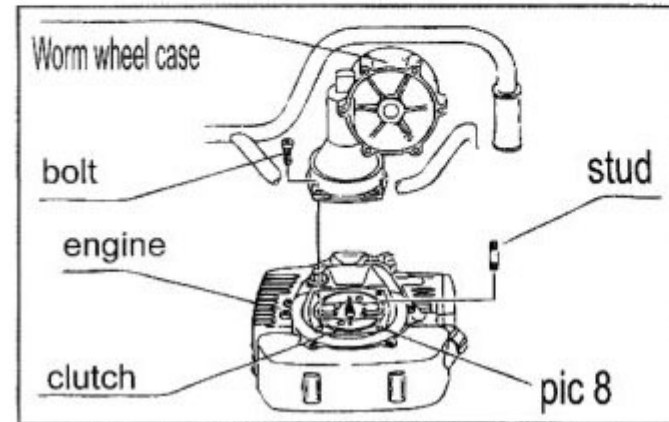
#### Work clothes

1. When operating this machine, good quality work clothes is recommended. (pic 3)
2. Never wear scarf and loose clothes, wind into the Drill bit is possible, serious injury maybe result.
3. Wear goggle is recommended to avoid possible damage to eyes. (pic 4)
4. When the operating ground is plain,work cap is recommended.However,when operating the incline ground,helmet is recommended.
5. Skidproof work shoe is recommended.(pic 3)
6. Wear earplug is recommended to avoid possible damaged to the ears.(pic 4)



#### 1. Transmission case & engine(pic 8)

- (1). Place the engine on the ground,make sure transmission plate upward.Fix it by bolt which marked asterisk place.
- (2). Put the transmission plate on the engine,fix it by bolt and nut.
- (3). Fix it by other 3pcs bolt,make sure the 4pcs in the same tight tune.

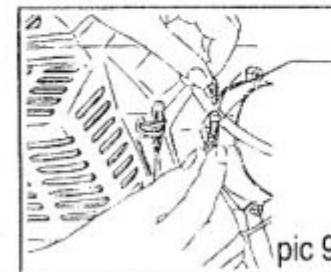


#### 2. Connecting Engine switch with transmission case

- (1). Open connecting case by using screwdriver unscrew bolt through Place A.
- (2). Connecting the engine switch to engine and transmission case accordingly.
- (3). Reassembly the connection case
- (4). Screw the connection case tightly.

#### 3. Engine switch and connections (pic 9)

Connecting Engine switch with Engine and Transmission case accordingly,make sure connections correctly(same color wire) and tightly.



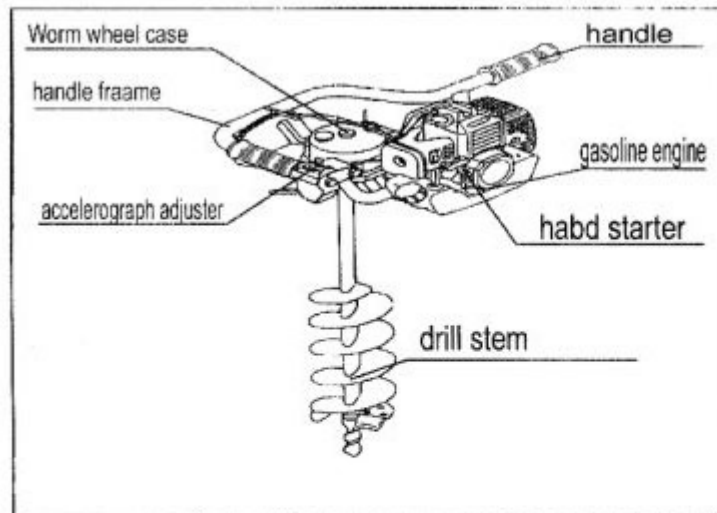
### Planting machine

Model	IE43F	IPE44F-6
Transmission type	automatic centrifugal transmission	
Transmission ratio	35:1	
Boring rotate speed (rpm)	170-200	170-200
Boring rotate direction	clockwise	
Weight(kg)	7.8(drill bit not including)	8.6(drill bit not including)
Dimension(L×W×H)	590×345×265(drill bit not including)	

### Engine specifications

Model	IE43F	IPE44F-6
Displacement(CC)	49.4	49.9
Max power(kw/r/min)	1.51/7000	1.9/7000
Max torque(N.m/r/min)	2.45/5300	2.7/6500
Max horsepower(PS)	2.3	2.6
Starting system	Recoil start	
Cooling system	Air-forced	
Ignition system	CDI	
Spark plug	L7T or MB6A	
Fuel mixed ratio	25:1 gasoline:lubricating oil	
Fuel tank capacity(L)	0.9	0.9
Noise level dB(A)av:ISO7917	93	93
Noise standard dB(A)av:ISO3744	99	99
Drill bit diameter (Max deepness:560 mm)	Diameter:φ60,φ100,φ150,φ200,φ250	

**Note:Specifications are subject to change without additional notice.**



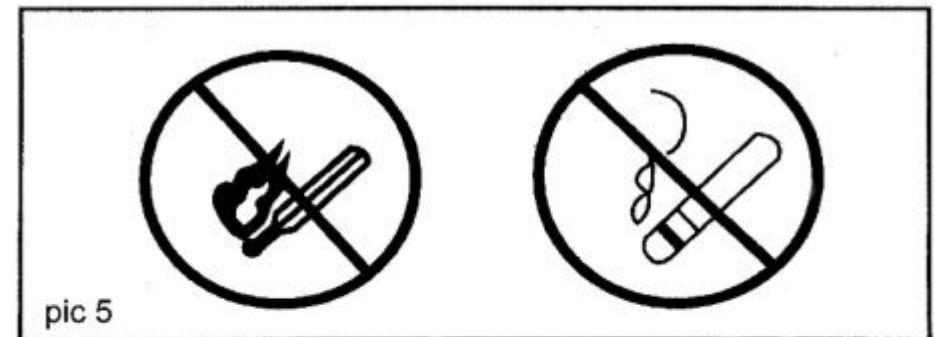
### C INSTALLATION

### Operating Environment note

1. Never overwork at any time.
2. Never operating this machine in rainy days,because it possible cause operator slip due to slippery ground.
3. Never operating this machine in door or poor ventilated area,because its emission contains carbon monoxide.

### No Open Flames

1. *Never smoking and fire in planting machine operating area.(pic 5)*
2. Never refuel when the engine is operating or overheat.
3. Please clean remains fuel by wipe the planting mahcine after refueling.
4. Keep the fuel 3 meter away at least when starting the engines.
5. Pay more attention to muffler and exhaust pipe,keep inflammable material away from them.
6. Using good quality fuel container.Make sure the fuel in dry and keep it away from inflammable area.



### Pre-operation check

1. Check each bolt and screw.Make sure them surely tightly.
2. Check Drill bit,if any damage,bend or crack existence.Never using damaged drill bit.

3. Use only genuine spare parts or their equivalent for maintenance or repair.

#### Starting

1. Fill in Fuel tank 25:1 (Gasoline:Two stroke lubricating oil)Mix fuel.



(Pic 6)

2. (Pic 6)Upright the machine,on hand grasp the frame,press it downwards,another hand pull the recoil starter,start the engine.

#### Cautions during operating process

1. Please keep 5-meter away at least from others,especially, keep child and animal away from the working site.
2. Please pay more attention when operating the incline rock ground surface, reverse rotate possible cause injury.
3. Never operating planting machine in unfavorable working conditions,hard and quality reliable working plate is recommended.
4. When planting machine stop operating,if somebody approach,to avoid any possible injury,approach from this machine's front is recommended.
5. When pause operating or turn to another working site,please stop the machine then transport,carry necessary accessories and Warning sign.
6. Only qualified operator can operating this machine.
7. Never touch drill bit when the engine is running.Maintenance can only be take in the conditions of engine stop and drill bit stop.
8. When the planting machine operating,pay more attention to the drill bit.Never touch the drill bit via any parts of body or clothes.
9. Planting machine only can be place on the ground when its engine and drill bit stop running completely.
10. When planting machine overwork or stop running,please control it in the conditions

of idle speed.

11. When take deep boring work, increase bore deep gradually is recommended.

#### Planting machine use



(Pic 7)



(Pic 8)

- 1, (Pic 7)Start the machine,both hand grasp the frame,increase the fuel supply gradually and press it downwards.
- 2, (Pic 8)When the drill bit bore into 10cm under the ground surface,grasp the frame tightly,press hard downwards.
3. When take deep boring work, increase bore deep gradually is recommended.Sometimes,pull the drill bit upwards,then press it downwards is recommended.
4. When the deep is enough,reduce the fuel supply,pull the drill bit,then bore another hole.

#### Maintenance

1. When Planting machine maintenance or parts replacement needed,stop the operation,in order to cooling the engine more quickly,remove the spark plug cap from Ignitor is recommended.
2. When Planting machine storage needed,exhaust all remain fuel,clean the machine.Make sure it keep away from inflammable area.

#### B、Components name and specifications.