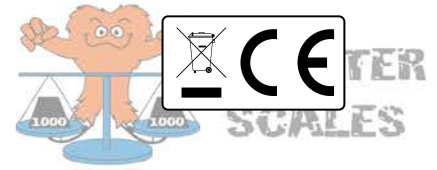


# T-Mech Note Counter

## By Monster Scales



# Contents

## Page by page overview of the instruction booklet

### Page 3 - Specification

Information regarding the technical parameters, inventory and product description of the product.

### Page 4 - Product Overview

Overview of the note counter features and functions

### Page 5 - Control Unit features

Overview of the control unit features and functions.

### Page 6 - Functions and Settings

A quick overview on the different counting functions.

### Page 7 - Counterfeit Detection

A quick overview of the different counterfeit note detection functions.

### Page 8 - Troubleshooting Guide

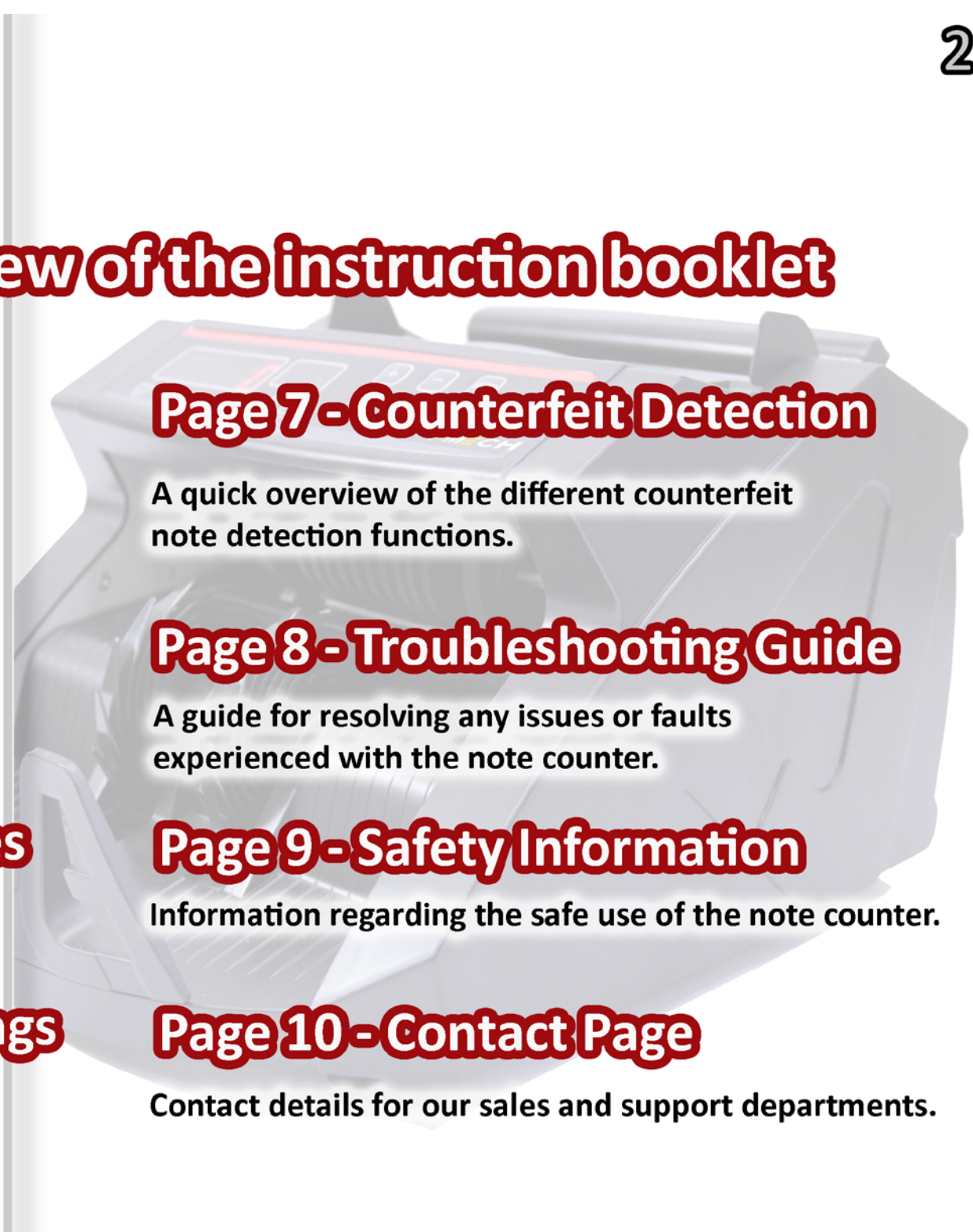
A guide for resolving any issues or faults experienced with the note counter.

### Page 9 - Safety Information

Information regarding the safe use of the note counter.

### Page 10 - Contact Page

Contact details for our sales and support departments.



# Specification

## Product Description

The T-Mech Note Counter is a perfect time saving device allowing for the quick and accurate counting of money notes. With an easy to use control interface and a counting speed of 1000 notes per minute the T-Mech note counter really is an essential for cashing in large amounts of money.

Additionally, the note counter also has four built in methods of counterfeit note detection so you can always ensure that the notes you are counting are secure.

## Monster Guarantee

On purchasing this product from our Monster Scales range you qualify for our 12 month electrical item guarantee.

## Item Contents

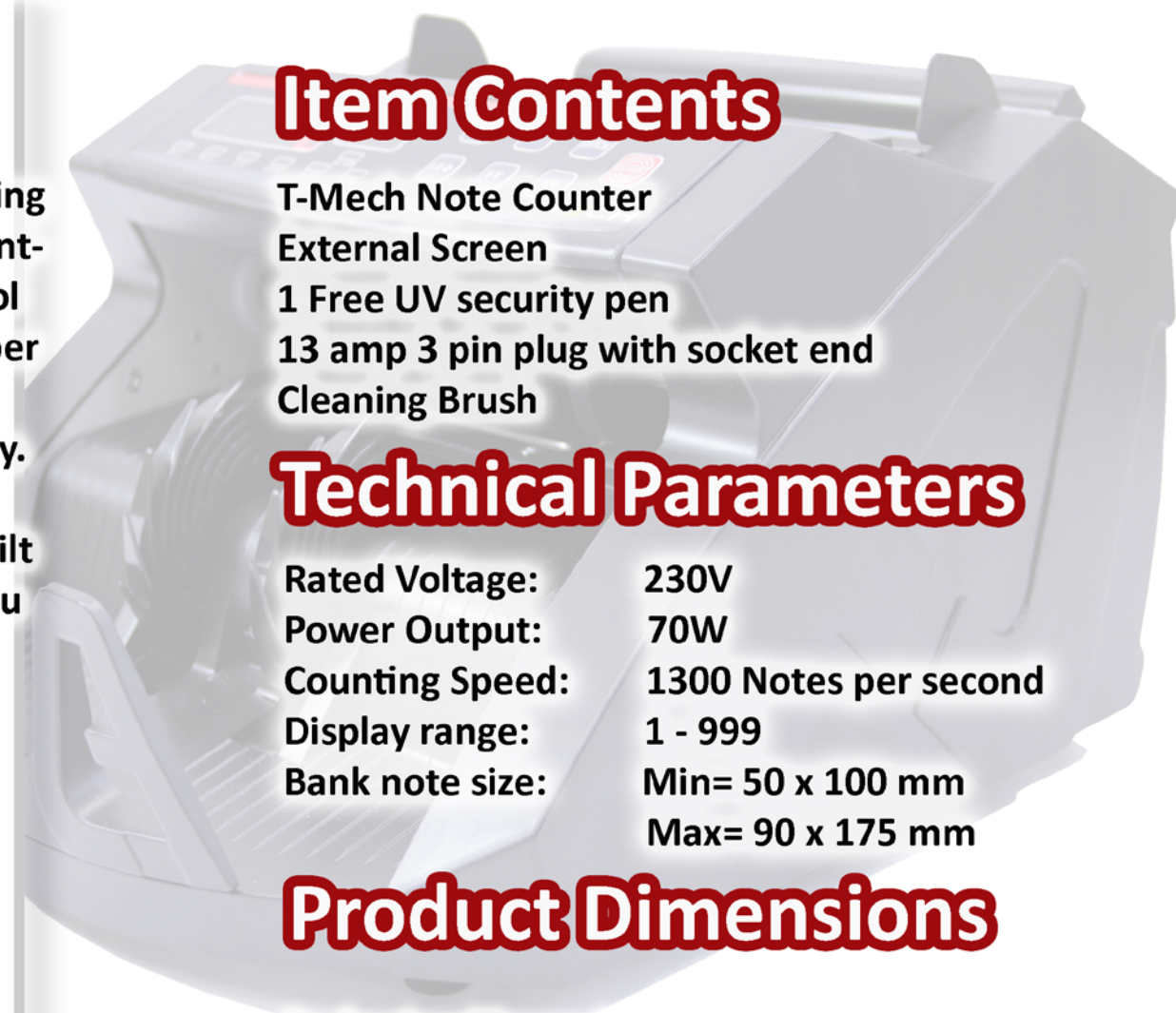
T-Mech Note Counter  
External Screen  
1 Free UV security pen  
13 amp 3 pin plug with socket end  
Cleaning Brush

## Technical Parameters

Rated Voltage:	230V
Power Output:	70W
Counting Speed:	1300 Notes per second
Display range:	1 - 999
Bank note size:	Min= 50 x 100 mm Max= 90 x 175 mm

## Product Dimensions

Packaging Dimensions:	86 x 39 x 28 cm
Product Dimensions:	29 x 24 x 15.5 cm
Product Weight:	5.7 Kg



# Specification



## Product Features

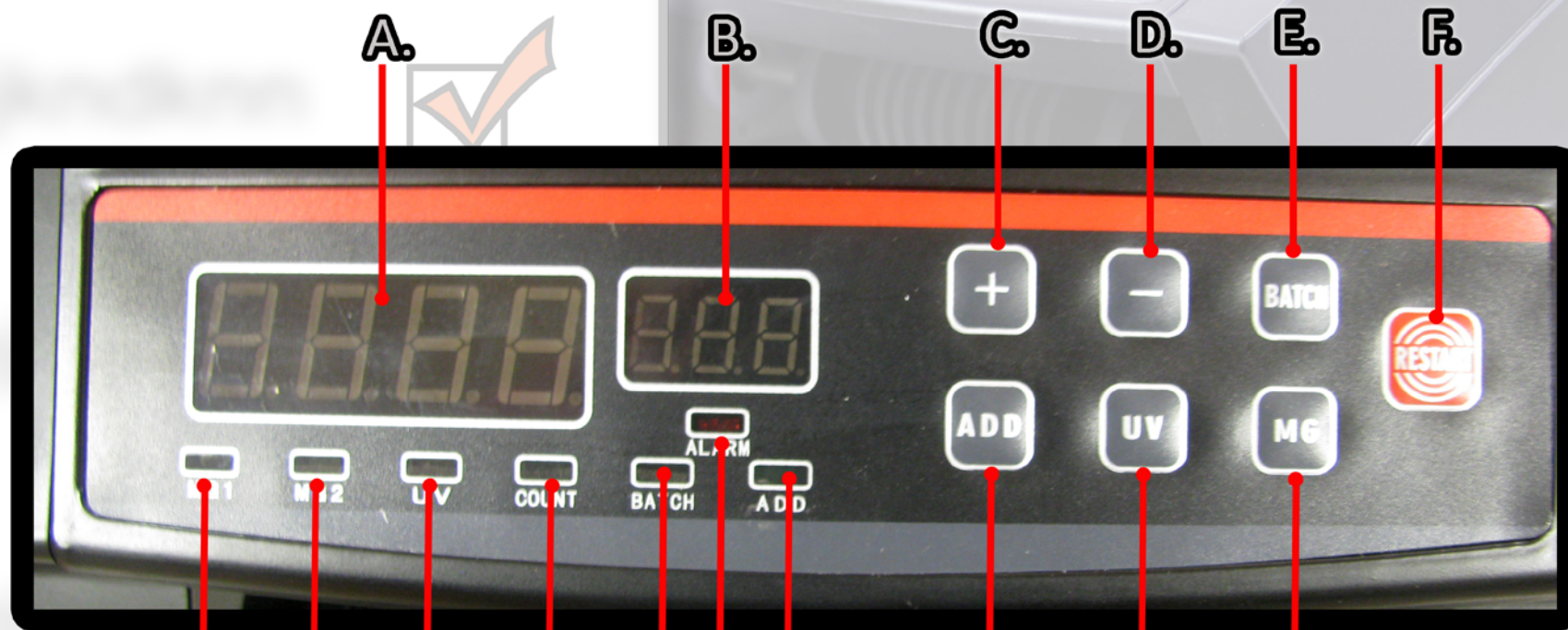
The relevant features of the note counter are all highlighted on this page.



# Specification

## Control Unit Display

The functions on the control display are highlighted below



A. Counter Display  
B. Batch Display  
C. '+' Button

D. '-' Button  
E. Batch Button  
F. Restart Button

G. Magnetic Sensor 1 Light  
H. Magnetic Sensor 2 Light  
I. UV sensor Light  
J. Count Light  
K. Batch Light  
L. Alarm Light

M. Add light  
N. Add Button  
O. UV Button  
P. MG Button

M. Add light  
N. Add Button  
O. UV Button  
P. MG Button

# User Guide

## Functions and settings

Instructions on how to use the note counter and the various in built functions that provide different counting options.

### Count Function

1. The count function allows bank notes to be counted in quantity and this is set as the default mode when you switch the counter on.
2. Ensure that the bank notes that require counting are separated in currency denominations and are all stacked facing the same way.
3. Take a stack of bank notes and insert them into the hopper at the top ensuring that they rest inbetween the size adjusters at either side.
4. When the notes are placed into the hopper the counter will automatically begin to feed them through and the count screen will show how many notes have been fed through.
5. When the notes have been removed from the stacker the count screen will clear and the amount will show in the batch screen.

### Denomination Count Function

1. To count note denominations and note denomination value press and hold the '+' button until the value '0' or '1' is shown on the batch display. Press the '+' button until it shows 1 and press add to confirm. The counter will now count the value of the banknotes in the counter display and record the quantity of bank notes in the batch display.

### Add Function

1. Bank notes can be counted separately and added together on the display.
2. By pressing the 'Add' button the counter will keep counting the notes that are fed through up to 999 or until the 'Add' button is pressed again which will clear the quantity shown on the display.
3. When in 'Add' mode the 'Add' indicator will show below the two screens.

### Batch Function

1. The batch function allow notes to be counted into pre-determined quantities of stacks.
2. By pressing the 'batch' button the counter will set to stack the notes into default amounts of 100.
3. By pressing the batch button it will cycle through the set amounts of 100, 50, 20, 10 and OFF. To adjust the batch amounts in increments of 1 hold or press the + or - button.
4. When the hopper has processed through the designated batch of notes it will stop counting. By removing the stack it will start counting the next batch automatically. If you wish to keep batching without removing the notes in the stacker press the reset button.
5. If the money counted does not match to the set batch amount the count screen will flash with the quantity counted.
6. When counting a batch number with the magnetic and/or UV sensor on the machine will automatically stop when detecting counterfeit notes. Remove the counterfeit note and press the restart button to resume.



Placing the notes and adjusting the size guide panels for counting

## Counterfeit Note Detection



Information regarding the built in counterfeit note detection settings.

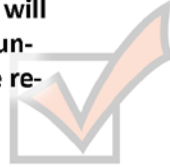
### UV (Ultraviolet) Detection Function

1. The UV function is used to check bank notes that contain UV features. When the counter is turned on the UV function will automatically switch on. The UV function can be switched on or off by pressing the UV button.
2. If the UV sensor detects a counterfeit note while counting the note counter will beep and the batch counter will show the message 'E04'. To continue counting the counterfeit note needs to be removed and by pressing the restart button the counter will continue to count.



### Double Detection Function

1. The Double Detection Function is activated by using the UV and MG detection functions simultaneously to increase the chance of detecting a counterfeit note. The note counter will be in double detection mode if both the UV and the MG lights are showing.

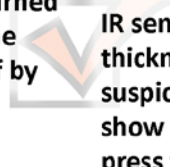


### Half-Note Detection

1. The 'half-note' detection function allows the counter to alert if a torn or folded note is sent through the sensors. If a folded or torn note is sent through the counter will emit a beep and the batch screen will show the message 'E01'. Remove the 'half-note' and re-arrange it so that it can pass through the sensors and press the restart button to continue.

### MG (Magnetic) Detection Function

1. The MG1 function is used to check bank notes that contain a low magnetism and the MG2 function checks bank notes with a high magnetism. When the counter is turned on the MG1 function will automatically switch on. The MG functions can be cycled through and switched off by pressing the MG button.
2. If the MG sensor detects a counterfeit note while counting the note counter will beep and the batch counter will show the message 'E20'. To continue counting the counterfeit note needs to be removed and by pressing the restart button the counter will continue to count.



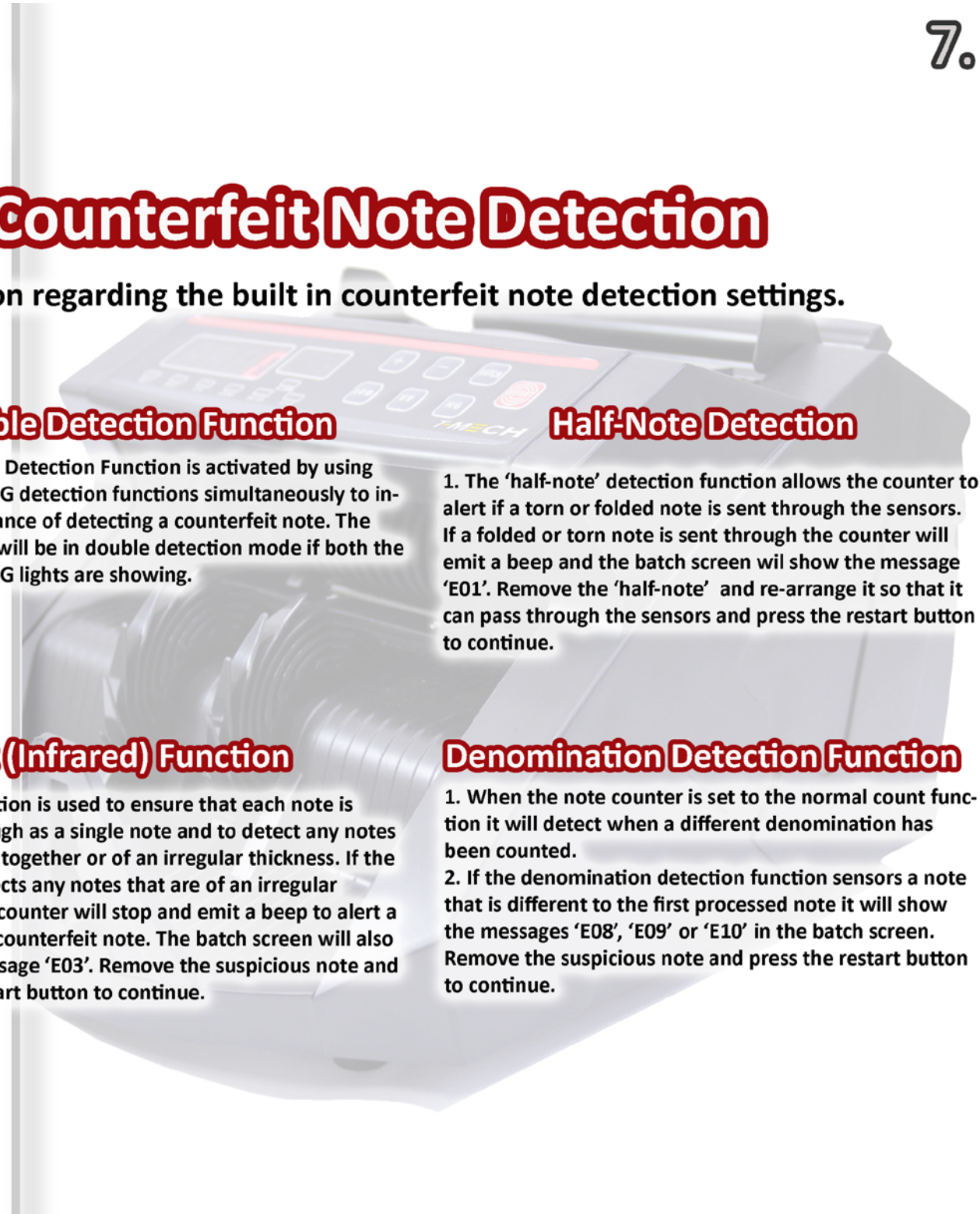
### IR (Infrared) Function

1. The IR function is used to ensure that each note is counted through as a single note and to detect any notes that are stuck together or of an irregular thickness. If the IR sensor detects any notes that are of an irregular thickness the counter will stop and emit a beep to alert a suspicious or counterfeit note. The batch screen will also show the message 'E03'. Remove the suspicious note and press the restart button to continue.



### Denomination Detection Function

1. When the note counter is set to the normal count function it will detect when a different denomination has been counted.
2. If the denomination detection function sensors a note that is different to the first processed note it will show the messages 'E08', 'E09' or 'E10' in the batch screen. Remove the suspicious note and press the restart button to continue.



# Troubleshooting

**Q:** The display is showing error message 'E04'.

**A:** If error message 'E04' is showing on the screen it means that the UV sensor has detected a suspicious note or that there is an issue with the UV sensor itself. This can be resolved by the following:

- Remove the suspicious note on the stacker and press the 'Restart' button to continue.

**Q:** The display is showing error message 'E20'.

**A:** If error message 'E20' is showing on the screen it means that the magnetic detection sensor has detected a suspicious note or that there is an issue with the sensor itself.

- Remove the suspicious note on the stacker and press the 'Restart' button to continue.

**Q:** The display is showing error message 'E03'.

**A:** If error message 'E03' is showing on the screen it means that the Infrared sensor has detected that a double thickness note has been detected or that there is an issue with the sensor itself.

- Remove the suspicious note(s) on the stacker and press the 'Restart' button to continue.

**Q:** The display is showing error message 'E08' or 'E12'.

**A:** If error message 'E08' or 'E12' is showing on the screen it means that the denominations cannot be identified.

- Remove the suspicious note on the stacker and press the 'Restart' button to continue.
- Ensure the counter is set to count mixed denominations. This can be done by holding '+' until 1 or 0 shows on the batch display. Press '+' to set the display to show '1' and press the add key to confirm.

**Q:** The display is showing error message 'E09' or 'E10'.

**A:** If error 'E09' or 'E10' is showing on the screen it means that a larger or smaller denomination has been detected and cannot be recognized.

- Remove the suspicious note on the stacker and press the 'restart' button.
- Ensure the counter is set to count mixed denominations. This can be done by holding '+' until 1 or 0 shows on the batch display. Press '+' to set the display to show '1' and press the add key to confirm.

## Resolution Guide

Please read through the troubleshooting guide below if you have any issues or faults with your note counter. The information covers and resolves the majority of frequently asked queries.

**Q:** The display is showing error message 'E01'.

**A:** If error message 'E01' is showing on the screen it means that the counter has detected a torn note or a note with irregular thickness.

- Remove the torn or irregular note from the stacker and press 'Restart' to continue.

**Q:** The display is showing 'CE 3' or 'CE4'.

**A:** If the error message 'CE3' or 'CE4' is showing on the screen it means that there is an issue with the left or right hand counting sensor.

- Clean the sensor using the brush provided or by using a damp cloth. If this does not resolve the issue please contact the customer service team using the details on the contact page.

**Q:** The display is showing 'CE8'.

**A:** If the error message 'CE8' is showing on the screen it means that there is an issue with the batch sensor.

- Clean the sensor using the brush provided or by using a damp cloth. If this does not resolve the issue please contact the customer service team using the details on the contact page.

**Q:** The display is showing 'CE5'.

**A:** If the error message 'CE5' is showing on the screen it means that there is an issue with the preset sensor.

- Clean the sensor using the brush provided or by using a damp cloth. If this does not resolve the issue please contact the customer service team using the details on the contact page.

**Q:** The display is showing 'CE2'.

**A:** If the error message 'CE2' is showing on the screen it means that there is an issue with the speed sensor.

- Clean the sensor using the brush provided or by using a damp cloth. If this does not resolve the issue please contact the customer service team using the details on the contact page.

**Please note:** Most of the issues listed above are caused by dust and dirt getting on to the surface or inside the sensors. By regularly maintaining and cleaning the machine all of these issues are highly preventable.



# Safety Advice



Do not operate the unit in areas of high temperature or humidity as the machine may not function correctly or count accurately.



When the note counter is not in use ensure that the power plug is removed from the socket. This will prevent damage through power surges.



Do not use the product in areas where it may be exposed to water or other liquids.

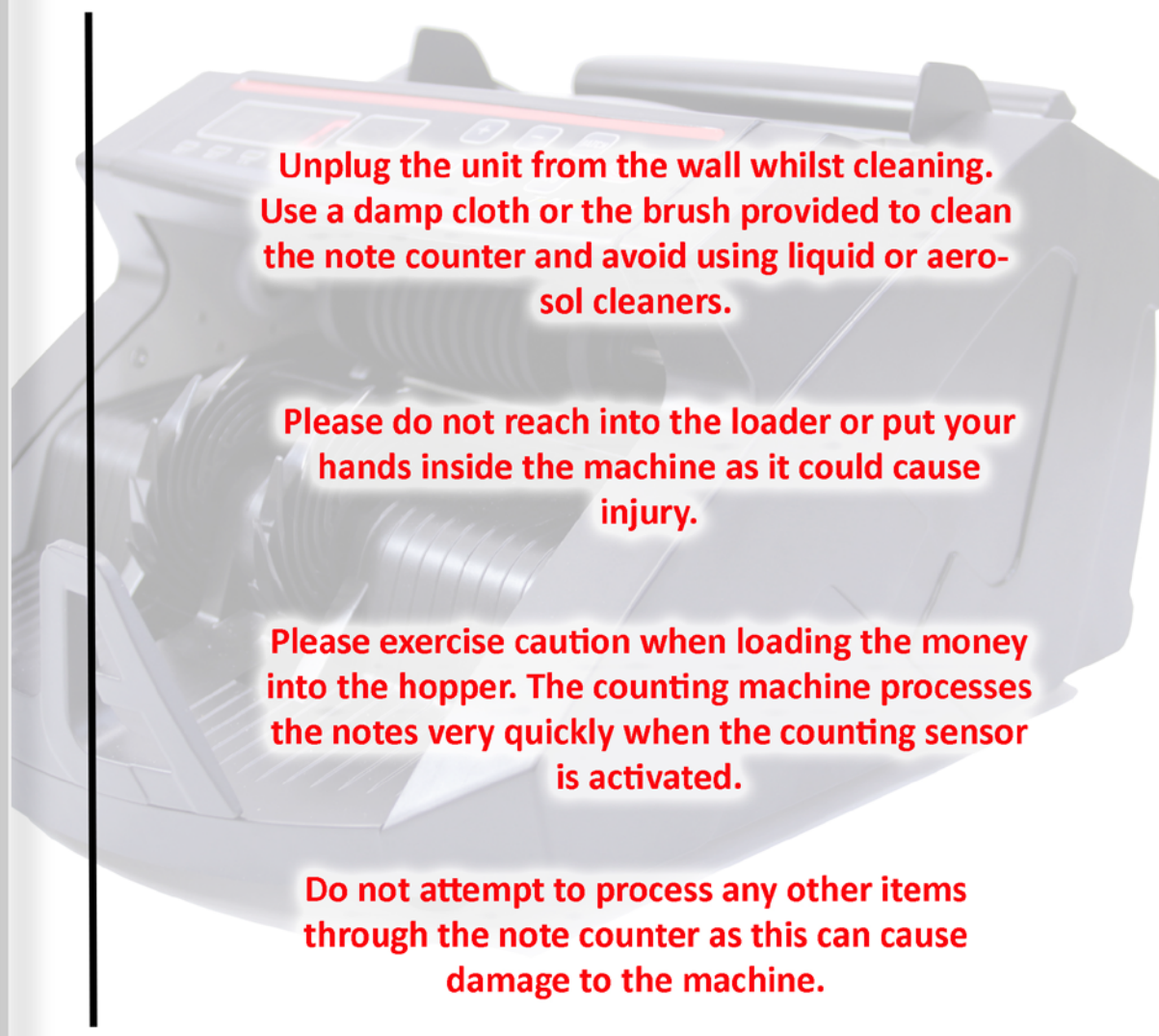


Never operate the machine under strong light.



## Safe Working Practice

Please read through the safe working practice to ensure prevention of injury or damage to the note counter.



Unplug the unit from the wall whilst cleaning. Use a damp cloth or the brush provided to clean the note counter and avoid using liquid or aerosol cleaners.

Please do not reach into the loader or put your hands inside the machine as it could cause injury.

Please exercise caution when loading the money into the hopper. The counting machine processes the notes very quickly when the counting sensor is activated.

Do not attempt to process any other items through the note counter as this can cause damage to the machine.

# Contact Us

10.

Our contact details for both our sales and support departments are provided below.

## Sales Department

For information regarding our consumables range and other products from our Monster Scales division please use the following details below.

**Tel: 01347 878888**

**Email: sales@monstergroupuk.co.uk**

## Support Department

For customer care queries, returns, reporting faults or for enquiries regarding warranty repairs please use the following details below.

**Tel: 01347 878887**

**Email: support@monstergroupuk.co.uk**

---

## Website

To view our consumables and product range and receive fantastic low price offers from our Monster Scales division please feel free to visit our website.

**[www.monsterscales.co.uk](http://www.monsterscales.co.uk)**

---

## Address

To visit our brand new offices 'Monster House' and view our product range, send postal correspondence or to return items our address is provided below.

**Monster House, Alan Farnaby Way, Sheriff Hutton Industrial Estate, Sheriff Hutton, York, YO60 6PG**