

# PixMax™ Elephant Airbrush Set

## Instruction Manual

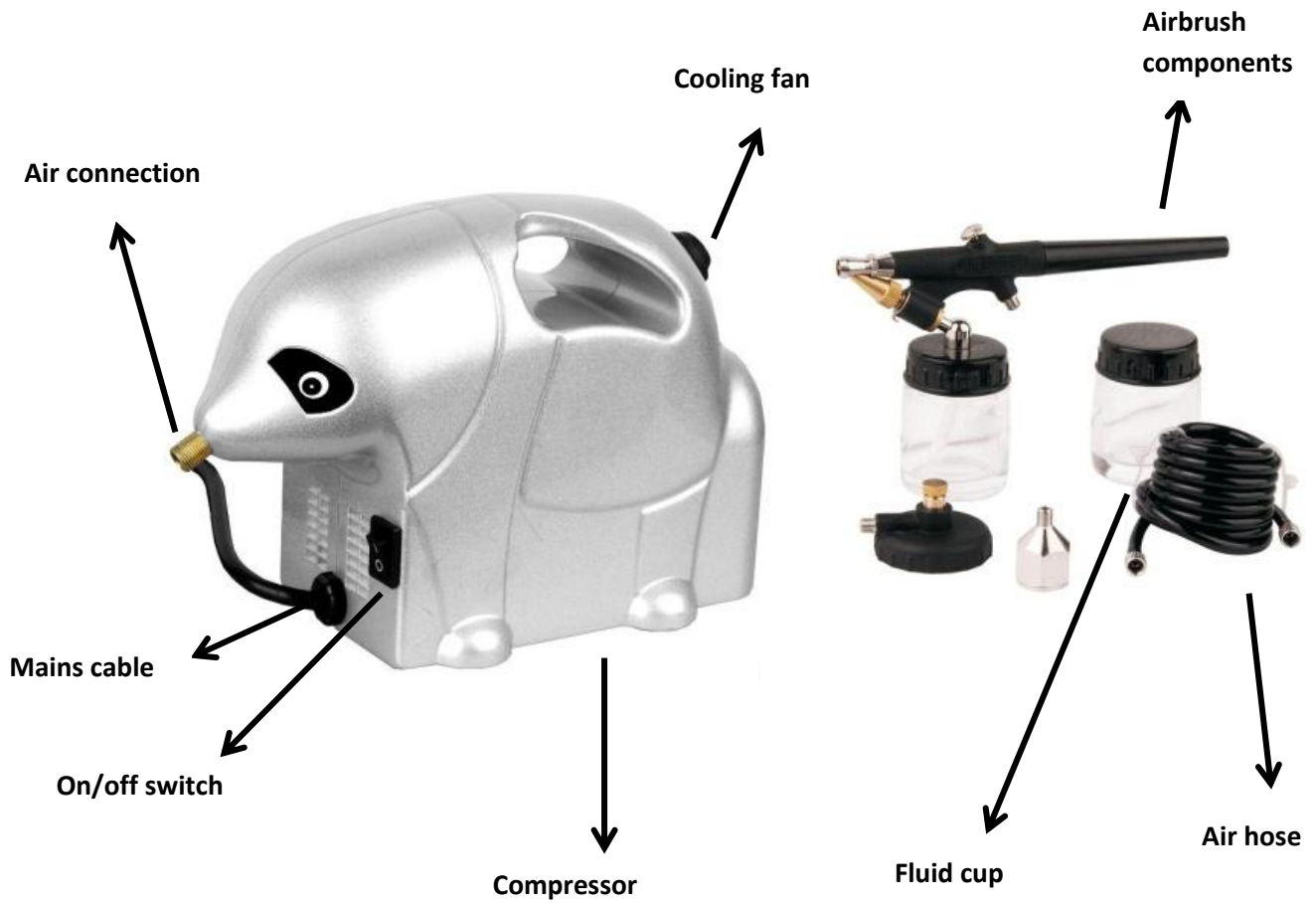


Figure 1: PixMax™ Elephant airbrush set components

# Operation Instructions

## Compressor operation:

1. Carefully unpack the machine onto a flat surface and check it over..
2. Connect one end of the air-hose to the air connector on the compressor and the other end to your airbrush.
3. Plug the compressor into a standard wall socket.
4. Turn the power switch on. The compressor will run continuously until you shut it off.
5. When restarting the compressor during operation, always release the air pressure first before turning it on again.

## Application:

Use for commercial arts, illustration, photo retouching, hobbies and craft, stencilling etc...

## Instructions for spraying

1. Ensure the hose is correctly connected between the air brush and the compressor. Mix the paint with the correct amount of **paint thinners** to ensure the paint obtains the correct consistency for spraying.
2. Hold the airbrush lightly in your hand. By gently pressing the lever a stream of air will emerge from the nozzle. Draw the lever back gradually to allow the paint to release into the air stream.
3. The spray pattern depends on the distance between the airbrush and the work surface. To get a fine line spray, remove the needle cover and hold the airbrush close to the work surface.

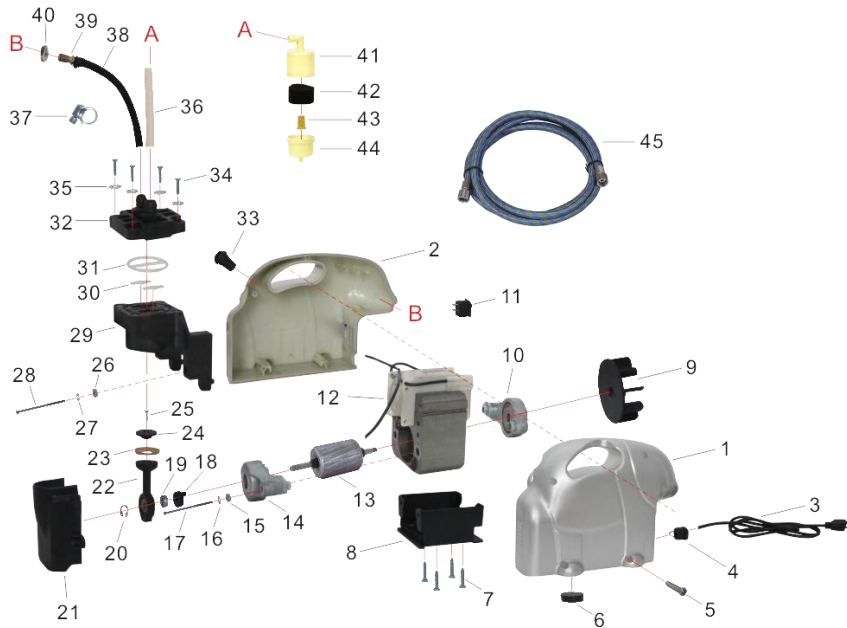
## Maintenance:

1. When finished with the air brush, remove and empty the fluid cup and wash it thoroughly with paint thinners to ensure that all paint is removed.
2. Fill the cup with paint thinners and re-attach to the air brush. Block the needle with one finger and press the lever to spray. The air will flow backwards through the nozzle and remove any remaining paint. **Note: This is important to prevent paint clotting and affecting the next use.**

## Caution

1. The user should select the correct air compression with suitable air flow and pressure according to the work being carried out.
2. Before plugging in the compressor, check the mains voltage is compatible with the machine.
3. Please follow local electrical and safety rules. Ensure the socket you use is earthed.
4. Never leave the appliance exposed to dust, acids, vapours, explosive or flammable gasses or left outdoors.
5. The vacuum pump must be used in suitable environments (well-ventilated, with an ambient temperature between +5°C and +40°C)
6. Do not allow children near the compressor.
7. Ensure the machine is operated correctly; misuse can cause injury.
8. Ensure the work area is well ventilated. It is recommended that a spray mask is worn to prevent breathing in any spray.

# Index of Parts



**Figure 2: Compressor parts breakdown**

PARTS NO	DESCRIPTTON	Q TY	PARTS NO	DESCRIPTTON	Q TY
AS-16 #01	LEFT COVER	1	AS-16 #24	PLASTIC BLOCK	1
AS-16 #02	RIGHT COVER	1	AS-16 #25	SCREW	1
AS-16 #03	WIRE	1	AS-16 #26	NUT	2
AS-16 #04	WIRE SNAP	1	AS-16 #27	PAD	2
AS-16 #05	SCREW	4	AS-16 #28	SCREW	2
AS-16 #06	AS-16 RUBBER PAD	4	AS-16 #29	CYLINDER BLOCK	1
AS-16 #07	SCREW	4	AS-16 #30	IN-OUT VALVE	2
AS-16 #08	MOTOR BRACKET	1	AS-16 #31	O-RING	1
AS-16 #09	COOLING FAN	1	AS-16 #32	CYLINDER HEAD	1
AS-16 #10	MOTOR PART 2	1	AS-16 #33	HOLDER	1
AS-16 #11	POWER SWITCH	1	AS-16 #34	SCREW	4
AS-16 #12	MOTOR PART 1	1	AS-16 #35	PAD	4
AS-16 #13	MOTOR PART 3	1	AS-16 #36	AIR HOSE	1
AS-16 #14	MOTOR PART 4	1	AS-16 #37	HOSE CLAMP	2
AS-16 #15	NUT	2	AS-16 #38	AIR HOSE	1
AS-16 #16	PAD	2	AS-16 #39	AS-16 OUTLET VALVE ROB	1

## Index of Parts

AS-16 #17	SCREW	2	AS-16 #40	COMPRESSION NUT	1
AS-16 #18	COUNTERWEIGHT	1	AS-16 #41	AIR FILTER HOUSING 1	1
AS-16 #19	BEARING	1	AS-16 #42	SPONGE	1
AS-16 #20	SNAP RING	1	AS-16 #43	FILTER CARTRIDGE	1
AS-16 #21	CONNECT PROTECTION COVER	1	AS-16 #44	AIR FILTER HOUSING 2	11
AS-16 #22	CONNECTING ROD	1	AS-16 #45	AIR HOSE	1
AS-16 #23	COMPRESSION RING	1	AS-16 #46		1