



10590

7.5m

Scaffold Tower



Try **Monster** - Buy **Monster** - Be **Monster**

Contents

Specification.....	Page 3
Safe Working Practice.....	Page 5
Scaffold Tower Parts.....	Page 7
Climbing your Scaffold Tower.....	Page 8
Moving the Platform.....	Page 9
Assembling your Scaffold Tower.....	Page 10
Moving your Scaffold Tower.....	Page 22
Dismantling your Scaffold Tower.....	Page 23
Contact and Help.....	Page 25

Specification

Product Description

The 7.5m Scaffold Tower can hold up to 300kg, be used at 3 different heights and comes with 2 trapdoor platforms.

The safe working load (SWL) of this scaffold tower is 300kg - SWL for each platform is 150KG, exceeding this weight limit can cause injury to the user and damage to the tower.

We at Monster Group UK understand this is a new and exciting purchase, and although it is tempting to get stuck in please carefully read these instructions before you start using the machine.

NOTE: The Monster Racking 7.5m Scaffold Tower is designed to be used by a competent person. Only competent personnel should undertake erection, dismantling and alteration, and consideration should be given to providing additional training beforehand, if required.

The Scaffold Tower requires a 2 man operation and should never be erected, dismantled, moved or used by a single person.

CAUTION: The Scaffold Tower MUST be constructed on a solid and level surface and in accordance with the instructions set out here. Failure to do so could significantly reduce the usability of the tower.

Please refer to and read Safety Advice, Safe Working Practice to ensure prevention of injury or damage to the unit before starting.

During assembly, ensure each piece of the tower is secure and all nuts and bolts are tight.

If any items are missing please get in touch with us within 7 days on receipt of your order, you can call or email us via the details on the Contact page.

Specification

Product Specifics

Dimensions: 6.2m h x 0.68m d x 1.8m w
Working Height: 7.5m
Material: Galvanised Steel
Capacity: 300kg (150kg per platform)

Monster Guarantee

If you wish to return a product in perfect working order, we provide a 14 day returns policy as long as the item is not assembled and in a resalable condition. A 12 month warranty applies to all of our electrical products, we will cover labour, parts and delivery charges. Our policy is to try and fix the item before arranging an exchange or refund. For full terms and conditions contact our Support department via the details on the 'Contact Us' page.

Safety Advice

Safe Working Practice

Please read through the safe working practice to ensure prevention of injury or damage to the device.

The tower classification of this Scaffold Tower is XXXD.

Ensure you have fully read and understood the safety advice and this instruction manual before beginning to construct the product.

This manual should be used in conjunction with a suitable risk assessment relative to the project to be undertaken. Please ensure you follow the manual content during assembly and that the scaffold tower is complete prior to use.

Safety Advice

Safe Working Practice

Ensure that all necessary components and safety equipment are available and operational.

You must wear Anti-Slip safety boots when working on the scaffold tower. We also strongly recommend wearing the following: gripper gloves and a safety helmet for personal protection.

Inspect all the tower components before each use:-

1. Look for any cracks or deep indents in the bars, connectors and ladders.
2. Ensure the wheel brakes work to lock the wheels correctly.
3. Check the outriggers are straight and the feet are flat.

If any component shows signs of damage or incorrect functioning prior to use, you must not use it.

Ensure the scaffolding is erected on a suitable foundation, capable of withstanding the loads imposed on it by the scaffolding.

Do not use the tower in adverse weather conditions. Under no circumstance should you use this scaffold tower in strong winds.

Two or more people are required to assemble the scaffold tower.

Ensure that the platforms are at 1.85m apart and the distance between them is no more than 4.2m. Do not affix the first platform any higher than 4.6m.

Do not commence assembly without having first purchased toeboards and brick guards. These greatly reduce the risk of falling. Clip on toeboards and brickguards are widely available through local and national suppliers.

During assembly, ensure each piece of the tower is secure and all nuts and bolts are tight.

The tower must always be climbed from within the structure, do not attempt to scale the tower from the outside.

When lifting materials and components, always use reliable lifting equipment and tying methods to ensure there is no possibility of the tower overturning. Always lift from within the tower base.

Always be aware of live electrical apparatus, cables or moving parts of machinery.

Care should be taken when using power tools, wash jets or other tools that cause lateral force. The maximum lateral force on a free-standing scaffold tower at platform level is 20kg.

Safety Advice

Safe Working Practice

Do not exceed the 300kg/ SWL for the tower. For each platform the SWL is 150KG

Additional items such as conventional ladders, boxes or steps should never be used to gain further height from the platform.

For your safety and that of others, take particular care not to allow components to fall to the ground when dismantling. This could not only result in damage to the components, but may cause serious injury.

Toeboard



Brick Guard



Do and Do not

- ✘ Do not bridge between a tower and a building.
- ✘ Do not jump on or onto platforms
- ✘ Do not use hoisting arrangements on a scaffold tower.
- ✘ Do not work on a platform without guard rails.
- ✘ Do not position the top platform any higher than 4 rungs from the top of the scaffold.
- ✘ Do not lean over the guard rails. Always work within reach.
- ✔ Do keep the platforms free from debris during work.
- ✔ Do ensure the outriggers are installed.
- ✔ Do ensure the platforms are at 2 metre intervals.
- ✔ Do check on a daily basis and after any significant weather, e.g. high winds or snow.
- ✔ Do Wear PPE at all times

Contents



Ladder x 2
Ladders with Connector x 4
GW 15 KG Each



Crossbar x 6
GW 3.5 KG Each



Guard Rail x 8
GW 3 KG Each



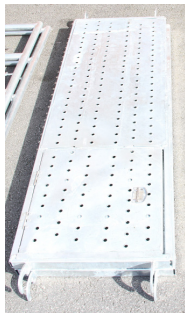
Bolt Pack
8 x Split Pin Bolts
4 x Wheel Bolts
GW 0.5 KG



Outrigger Support x 4
GW 2 KG Each



Outrigger x 4
GW 5 KG Each



Platform x 2
GW 23 KG Each



Wheel x 4
GW 3 KG Each

User Guide

Safely Climbing your Scaffold

Key Points

You must always climb on the inside of the ladders

Each platform has a safe working load of 150kg.

Always keep 3 points of contact with the tower when climbing



Use the rungs for your feet and hands



Always climb up the inside of the ladders and carefully manoeuvre through the trapdoor.



Always close the trapdoor once on the platform.



You can now safely stand on the platform

User Guide

Moving the Platforms



1- Place the platform in a near vertical position facing the ladders



2- Rest the end of the platform against the rung on which it will be placed



3- Lift and push the platform so the end protrudes from the ladders



4- Lift the platform to a level position

5- Pull the platform backwards until the hooks lock over the ladder rung. Both ends should now be locked into position.

Removal is the reverse



User Guide

Assembly Instructions

This manual should be used in conjunction with a suitable risk assessment relative to the project to be undertaken. Please ensure you follow the manual content during assembly and that the tower is complete prior to use.

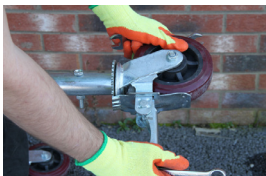
CAUTION: The Scaffold Tower MUST be constructed on a solid and level surface and in accordance with the instructions set out here. Failure to do so could significantly reduce the usability of the tower.

Step 1

Take 2 x ladders with connectors and 4 wheels. Lay the ladder flat and insert one wheel at a time. Align the bolt and secure with nut for each wheel using 2 x 17mm spanners. Ensure that the nut is tightened securely and lock the brake on the wheel before moving onto the next wheel.



Pic 1



Pic 2



Pic 3

Pic 1. Ensure that the nut is tightened securely.

Pic 2. Lock the brake horizontally on the wheel.

Pic 3. Repeat for all four wheels across both ladders.

FINAL CHECK - HAVE YOU TIGHTENED THE BOLTS ON EACH WHEEL SECURELY?

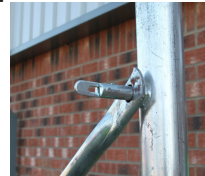
Step 2 - Add the first crossbars - 2 people required



Pic 1



Pic 2



Pic 3



Pic 4

Pic 1 - Take 2 x cross bar sets and attach to each of the 2 ladders that you have just added the wheels to. Ensure the cross bar latches are secure.

Pic 2- Ladders with both cross bar sets attached.

Pic 3- An unsecured latch

Pic 4- A secure latch

FINAL CHECK – ARE ALL THE LATCHES SECURE?

User Guide

Assembly Instructions

Step 3 – Add the outriggers to the tower

Important Notes:

Outriggers should be attached to the tower between the 5th & 6th rung.

Each Outrigger should always be resting on the ground.

They should be fitted with a 45 degree angle from the tower where possible in order to maximise the footprint of the tower.



Pic 1



Pic 2



Pic 3

Pic 1 - Use the clamp to fasten the outrigger to the tower. Tighten with 17mm spanner.

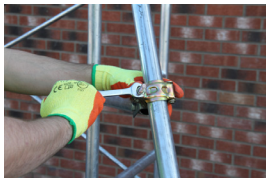
Pic 2 - Each outrigger should rest on the ground

Pic 3- Repeat for all 4 outriggers. When all 4 are fitted you can adjust them to the required 45 degree angle from the tower.

FINAL CHECK - HAVE YOU FIRMLY TIGHTENED THE CLAMPS?

Step 4 – Attach the outrigger supports

Each support should attach from the Outrigger to just above the 3rd rung on the ladder. Attached in the correct way this ensures the support cannot slip further down the tower.



Pic 1



Pic 2



Pic 3

Pic 1- Using the clamp fasten the support to the ladder and outrigger. Use a 17mm spanner to tighten the bolt on the clamp securely.

Pic 2 - Each outrigger support should sit above the third rung on the ladder and then horizontally across to the Outrigger.

Pic 3- Repeat for all 4 outrigger supports.

FINAL CHECKS – HAVE YOU FIRMLY TIGHTENED THE CLAMPS ON THE SUPPORTS?

User Guide

Assembly Instructions

Step 5 – Add the first platform

The first platform should be added on the 5th rung up.



Pic 1



Pic 2



Pic 3

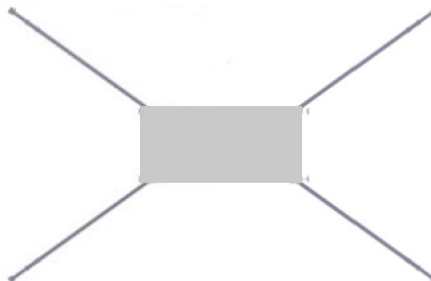
Pic 1 - **Slide in the ladder from one end between the 5th and 6th rung up.**

Pic 2 - One person needs to move into the middle of the tower, whilst the other keeps hold of the platform at one end, until it is fed across both ladders.

Pic 3 - Ensure that the hooks securely sit on the ladders

**FINAL CHECKS – ARE THE BRAKES SET ON THE WHEELS?
HAVE YOU FIRMLY TIGHTENED THE CLAMPS?
ARE ALL FOUR OUTRIGGERS RESTING ON THE GROUND?
IS THE PLATFORM SECURELY FIXED ON THE LADDERS?**

The outriggers should be positioned so that they create the largest footprint possible. This is usually by placing them at a 45 degree angle as per the below image.



User Guide

Assembly Instructions

Step 6 - Add the next 2 sets of ladders with connectors

REMINDER – ALL PERSONS INVOLVED WITH THE ASSEMBLY OF THE SCAFFOLD TOWER MUST WEAR THE CORRECT PPE, ESPECIALLY HARD HATS.



Pic 1



Pic 2



Pic 3

One person should climb up on the inside of the tower at the trapdoor end and climb through the trap door. Please refer to step by step instructions on how to move up the tower, which are located on Page 8 of the manual.

Pic 1- One set of ladders with connectors should be passed from the person on the ground to the person on the platform at the side of the tower.

Pic 2- The ladders should be fitted in with the connectors at the top, as the bottom ladders will already have the connectors facing up.

Pic 3- Repeat on the other side with the second set of ladders with connectors.



Pic 4



Pic 5

Pic 4- Use split pins to secure.

Pic 5- A secure split pin.

FINAL CHECKS – ARE ALL SPLIT PINS ACROSS BOTH SETS OF LADDERS SECURED?

User Guide

Assembly Instructions

Step 7 – Add the Guard rails

The guard rails should be added to the ladders at both sides, 950mm from the platform.



Pic 1



Pic 2



Pic 3

Pic 1 & 2- Add the guard rails just under the 3rd rung of the ladders from the bottom of the platform. This will be approx. 950mm from the platform.

Pic 3- Always tighten the clamps firmly using the 17mm spanner.

FINAL CHECKS – HAVE YOU TIGHTENED ALL CLAMPS ACROSS BOTH GUARD RAILS?

Step 8 – Affix the next cross bars

Add crossbars to both sides of the second set of ladders.



Pic 1



Pic 2



Pic 3

Pic 1- Use the latches on the ladders to place the cross bars in the correct position on the inside of the tower.

Pic 2- Repeat for the second crossbar. Have the person on the ground carefully pass the crossbars up to the person on the platform.

Pic 3- Use the latches on the ladders to place the cross bars in the correct position on the inside of the tower.

For correct operation of the latches refer to page 10 for guidance

FINAL CHECKS – ARE ALL LATCHES ACROSS BOTH CROSS BAR SETS SECURE?

User Guide

Assembly Instructions

Step 9 – Adjust the Guard rails

Now that the additional cross bars have been added you can move the guard rails lower down.



Pic 1



Pic 2



Pic 3

Pic 1- The guard rails from the first platform should now be lowered so that they sit between the **6th and 7th rung** from the ground. It will be just above the split pins.

Pic 2- Repeat for the second guard rail.

Pic 3- Always tighten the clamps firmly using the 17mm spanner.

FINAL CHECKS – HAVE THE CLAMPS BEEN TIGHTENED SECURELY?

User Guide

Assembly Instructions

Step 10 – Add the next pair of guard rails

These guard rails should be added just below the top rung (12th from the floor) at both sides.



Pic 1



Pic 2

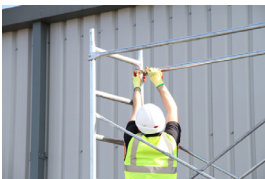


Pic 3

Pic 1- The person on the ground should carefully pass each guard rail through the ladders to the person on the platform.

Pic 2- The guard rail should be attached to the ladders just underneath the top/12th rung from the ground.

Pic 3- Always tighten the clamps firmly using the 17mm spanner.



Pic 4



Pic 5



Pic 6

Pic 4- Repeat for the second guard rail ensuring that it is attached to the ladders just underneath the top/12th rung from the ground.

Pic 5- Always tighten the clamps firmly using the 17mm spanner.

Pic 6- At this point your scaffold will look like this.

FINAL CHECKS – HAVE THE CLAMPS BEEN TIGHTENED SECURELY?

User Guide

Assembly Instructions

Step 11 – Add the second platform

The second platform should sit on the 9th rung from the ground.

IMPORTANT – MAKE SURE THAT THE TRAPDOOR IS AT THE OPPOSITE END TO THAT OF THE FIRST PLATFORM



Pic 1



Pic 2



Pic 3

Pic 1. & Pic. 2. The person on the ground should carefully pass the platform up at the front of the tower and thread through in between the cross bars and guard rails to the person on the platform.

Pic 3- The person on the platform should now stand the second platform on its end.



Pic 4



Pic 5

Pic 4- The platform should be threaded through the 9th and 10th rung, using the lower rung to bear some of the weight, remembering that the trapdoor on this platform must be at the opposite end to the one the person is standing on.

Pic 5 - Slide the platform out so that it becomes level and then manoeuvre across so that it can rest on the 9th rung. Use the ladders to bear some of the weight. Ensure that the hooks securely sit on the ladders at both ends and that the platform firmly rests in place.

FINAL CHECK - IS THE PLATFORM SECURELY FIXED ON THE LADDERS?

ARE THE TRAPDOORS ON THE PLATFORMS AT OPPOSITE ENDS?

User Guide

Assembly Instructions

Step 12– Move up to the 2nd platform and check the height of the guard rails

Standing on the second platform ensure the guard rails are 950mm from the platform

Step 13 – Add the final sets of ladders without connectors



Pic 1



Pic 2



Pic 3

Pic 1. & Pic. 2. With the person on the platform the ladders should be carefully passed up from the person on the ground through the middle of the tower.

Pic 3- The ladders should be fitted on top of the ladders with connectors.



Pic 4



Pic 5

Pic 4- Use split pins to secure.

Pic 5- A secure split pin.

FINAL CHECKS – ARE ALL SPLIT PINS ACROSS BOTH SETS OF LADDERS SECURED?

User Guide

Assembly Instructions

Step 14– Affix the final sets of crossbars

Add crossbars to both sides of the third set of ladders.

You will need a long enough tool to be able to reach the latches on the ladders.

You must never climb the ladder frame before the cross bars are secured. Risk of death or serious injury.



Pic 1



Pic 2



Pic 3

Pic 1- Use the long tool to open the latches on the highest ladders.

Pic 2- Place the cross bars on the lower latches on the inside of the tower, whilst still taking some weight to help direct the higher crossbar pieces onto the highest latches. Then using the long reach tool, close the latches into the secured position.

For correct operation of the latches refer to page 10 for guidance

FINAL CHECKS – ARE ALL LATCHES ACROSS BOTH CROSS BAR SETS SECURE?

Step 15 – Move the lower platform up the tower.

The person at ground level removes the lowest platform and passes it up to the person on the highest platform.



Pic 1



Pic 2



Pic 3

Pic 1- The person on the ground should carefully pass the platform up at the front of the tower.

Pic 2- The platform should be threaded through the 13th and 14th rung, using the lower rung to bear some of the weight.

Pic 3- Ensure that the hooks securely sit on the ladders at both ends.

FINAL CHECK - IS THE PLATFORM SECURELY FIXED ON THE LADDERS?

User Guide

Assembly Instructions

Step 16– Adding the highest guard rails

The person on the ground should pass the 2 x guard rails to the other person when they are on the lower of the two platforms.



Pic 1



Pic 2



Pic 3

Pic 1- Fix each guard rail to just under the highest rung.

Pic 2- Repeat for the second guard rail ensuring that it is attached to the ladders just underneath the top rung

Pic 3- Always tighten the clamps firmly using the 17mm spanner.

FINAL CHECK - HAVE YOU SECURELY TIGHTENED ALL CLAMPS ON THE GUARD RAILS?

Step 17– Move the highest platform in to its final position

The platform will move to 6th rung from the top to the 4th rung from the top. This will mean that the highest guard rails will be now sat 950mm above the highest platform.



Pic 1



Pic 2



Pic 3

Pic 1- Move down to the lower platform and push the platform above your head up off the ladder rungs

Pic 2- Using an end rung to bear most of the weight slide the platform out and move up 2 rungs

Pic 3- The platform will now sit on the 4th rung from the top. Ensure that the hooks securely sit on the ladders at both ends and that the platform firmly rests in place.

FINAL CHECK - IS THE PLATFORM SECURELY FIXED ON THE LADDERS?

ARE THE TRAPDOORS ON THE PLATFORMS AT OPPOSITE ENDS?

User Guide

Assembly Instructions

Step 18– Adding the final guard rails.

The person on the ground should pass the final 2 x guard rails to the other person when they are on the lower of the two platforms.



The guard rails should be fitted with the clamp just above the top crossbar latches. Secure the clamps using the 17mm spanner.

FINAL CHECK - HAVE YOU SECURELY TIGHTENED ALL CLAMPS ON THE GUARD RAILS?



Your Tower is now complete



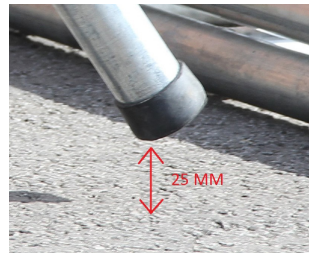
User Guide

Safely moving your Tower

In order to safely move your scaffold tower it should be reduced down to one set of ladders high. The outriggers should be raised off the ground by 25mm and locked into position. The tower should always be moved by two people.



Loosen the outrigger supports and push them upwards on the outriggers; this will lift the outriggers off the floor.



The outriggers should be locked 25mm from the ground.



Release the brakes on all 4 wheels.



2 people should be used to move the tower as per the positions in the picture.

Always apply the brakes when the tower is not being moved

User Guide

Dismantling Instructions

Dismantling of the tower is largely the reversal of erection. Please ensure you follow this manual to ensure the correct steps are taken.



Remove the middle guard rails from the top platform using the 17mm spanner.



Lower the top platform 2 rungs down to the 6th rung from the top.



Remove the top guard rails using the 17 mm spanner.



Standing on the lower platform, remove the top platform and place on the 6th rung from the bottom .



Using a tool remove the crossbars from the top ladder section. Refer to page 10 for latch guidance.



Remove the split pins of the top ladder sections and pull the ladders upwards to free them.



Standing on the lower platform, remove the top platform.



Remove the top guardrails using the 17mm spanner.



Remove the lower guardrails using the 17mm spanner.

User Guide

Dismantling Instructions



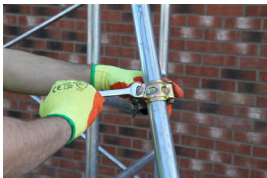
Remove the crossbars from the top ladder section. Refer to page 10 for latch guidance



Remove the split pins of the top ladder sections and pull the ladders upwards to free them.



Remove the platform from the tower



Remove the Outrigger Supports using the 17mm spanner



Remove the Outriggers using the 17mm spanner



With assistance, remove the crossbars from the ladders. The ladders will fall without support



Finally use the 17mm spanner to remove the wheel bolts. The wheels can now be removed

Contact Us

Sales Department

For information regarding this device or other products from our Monster divisions please use the following details below.

Tel: 01347 878888

Email: sales@monstergroupuk.co.uk

Support Department

For queries about this device, warranty, returns or reporting faults please use the following details below.

Tel: 01347 878887

Email: support@monstergroupuk.co.uk

Website

To view our product range and fantastic offers please visit our website

www.monstershop.co.uk

Address

To visit our office Monster House and view our products, send postal correspondence or return items our address is provided below.

Monster House, Alan Farnaby Way, Sheriff Hutton Industrial Estate, Sheriff Hutton, York YO60 6PG



Monster Group (UK) is one of the UK's fastest growing online retailers. We supply a diverse range of products which offer exceptional value for money. We strive to provide the best possible customer experience with free UK delivery across all our products and a Monster Guarantee for 100% satisfaction.

Our dedicated customer service team will be more than happy to help with any questions you may have.

Monster Chef
Monster Racking
Monster Doodles
Monster Scales
Monster Retail

Check out all our Monster brands at www.monstershop.co.uk
