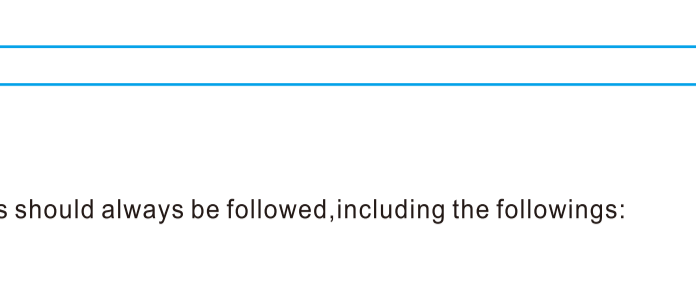


OWNERS MANUAL English



MODEL NO. : WCS-F1

INTELLIGENT AUTOMATIC DESKTOP CUP SEALING MACHINE



EN IMPORTANT SAFEGUARDS

When using electrical appliances, basic safety precautions should always be followed, including the following:

⚠ WARNING

- Read all instructions.
- To protect against risk of electric shock, do not immerse cord, plug or base in water or other liquid.
- Close supervision is necessary when any appliance is used by or near children. Never leave an appliance unattended when in use.
- Unplug as not in use, before putting on or taking off parts, and before cleaning. To unplug, grasp plug and pull straight out from outlet. Never pull cord.
- Avoid contacting moving parts, heating plate and blade.
- Do not operate any appliance with a damaged cord or plug or after the appliance malfunctions or is dropped or damaged in any manner. Return appliance to the nearest authorized service facility for examination, repair, or adjustment.
- The use of attachments not recommended or sold by the appliance manufacturer may cause fire, electric shock, or injury.
- Do not operate or place any part of this appliance on or near any hot surfaces (such as gas or electric burner or in a heated oven.)
- Do not let cord hang over edge of table or counter, or touch hot surfaces.
- Always be sure the Machines securely clamped in place before operating appliance.
- Be sure to power OFF after each use. Make sure the motor stops completely before disassembling.
- Do not operate this appliance in the presence of explosive and/or flammable fumes.
- Do not hold on the cup after put it into cup pallet, hands off immediately.
- Do not use empty cup to seal, the film will bring up this sealed empty cup during moving.
- Do not use appliance for other than intended use.

EN SAFETY AND INSTRUCTIONS

⚠ DANGER

- Plug the cord into a standard 110V or 220V outlet.
- Before starting the machine, please turn off the power and take off the power cord out.
- Before start the machine, be sure the sealing film fixed in right condition, there is no sundries on cup pallet.
- Never put hand inside the sealing space unless unplugged power cord, never contact heating part and blade any hard things.

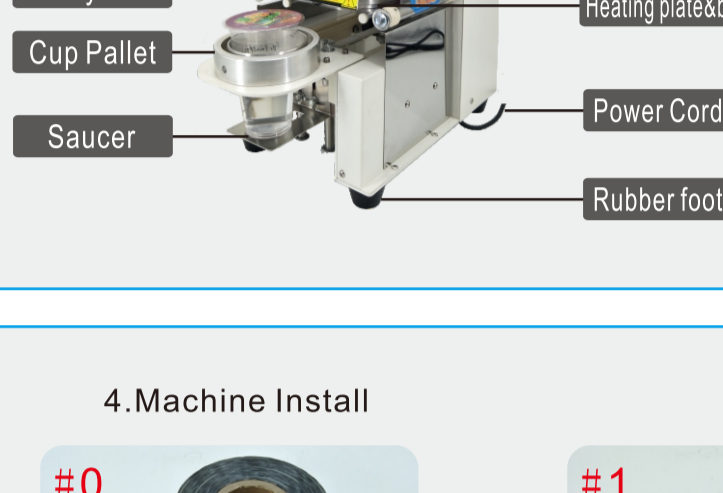
Please save this user manual.

EN YOUR CUP SEALING MACHINE

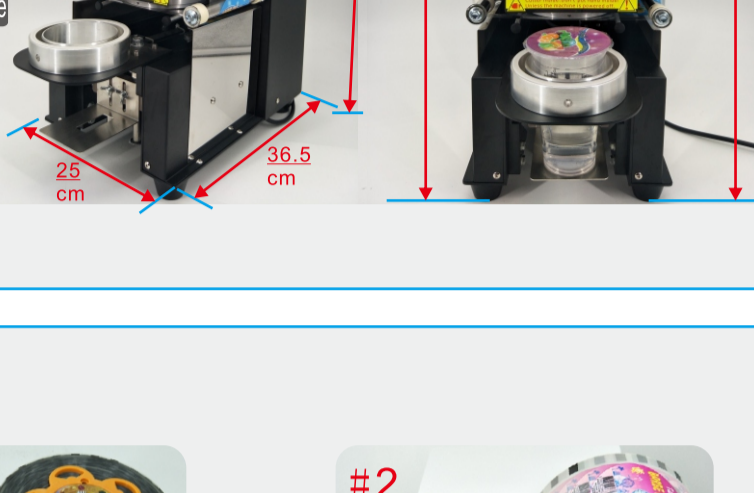
1. Specifications

Model No.	Machine Dimension(L/W/H)	Horsepower	Power Supply	Product Weight	Capacity
WCS-F1	36/36/63cm	420W	110V or 220V	23kgs/51LBS	500-650cups/H

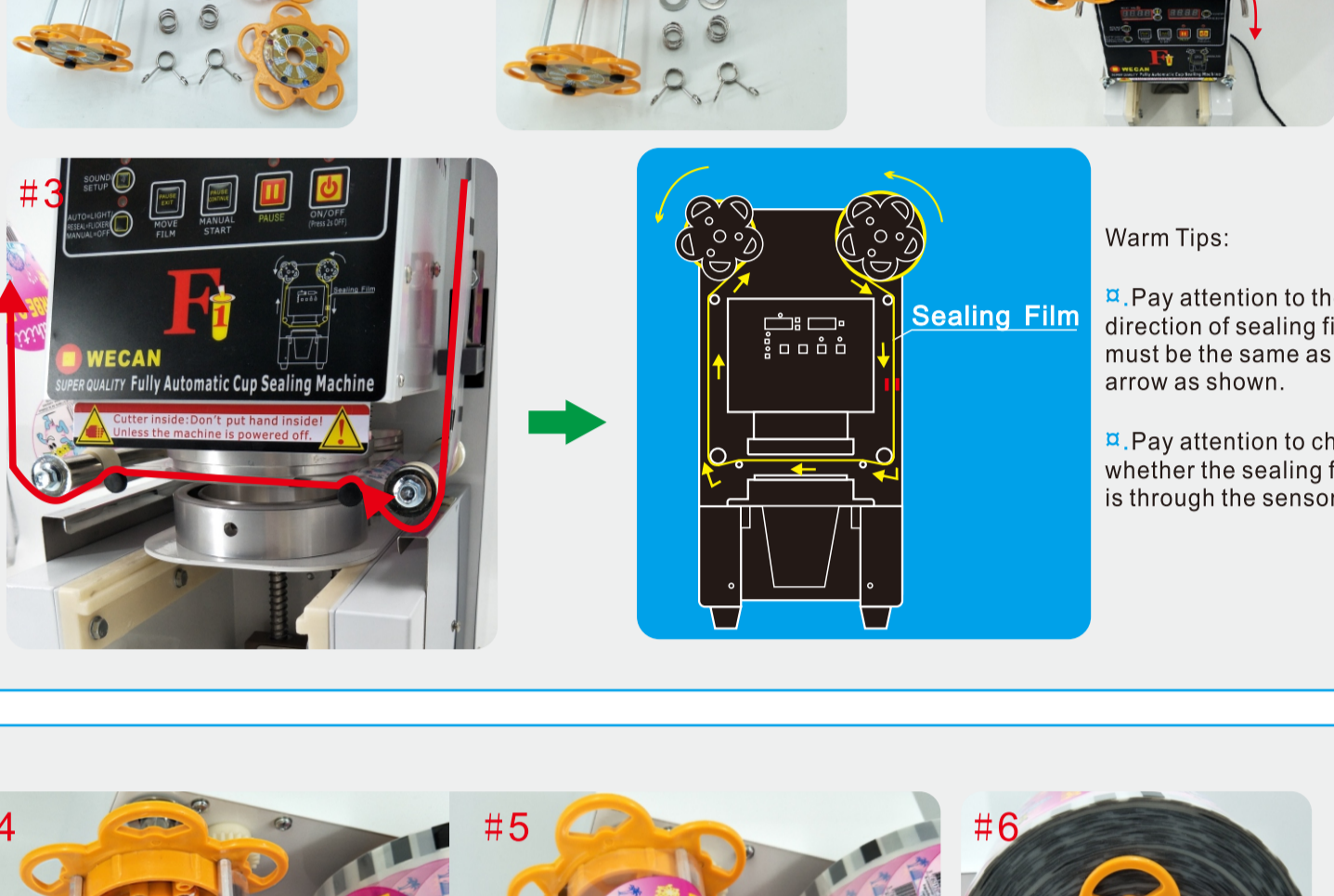
2. Parts Description



3. Machine Size



4. Machine Install



- Warm Tips:
- Pay attention to the direction of sealing film must be the same as the arrow as shown.
 - Pay attention to check whether the sealing film is through the sensor.

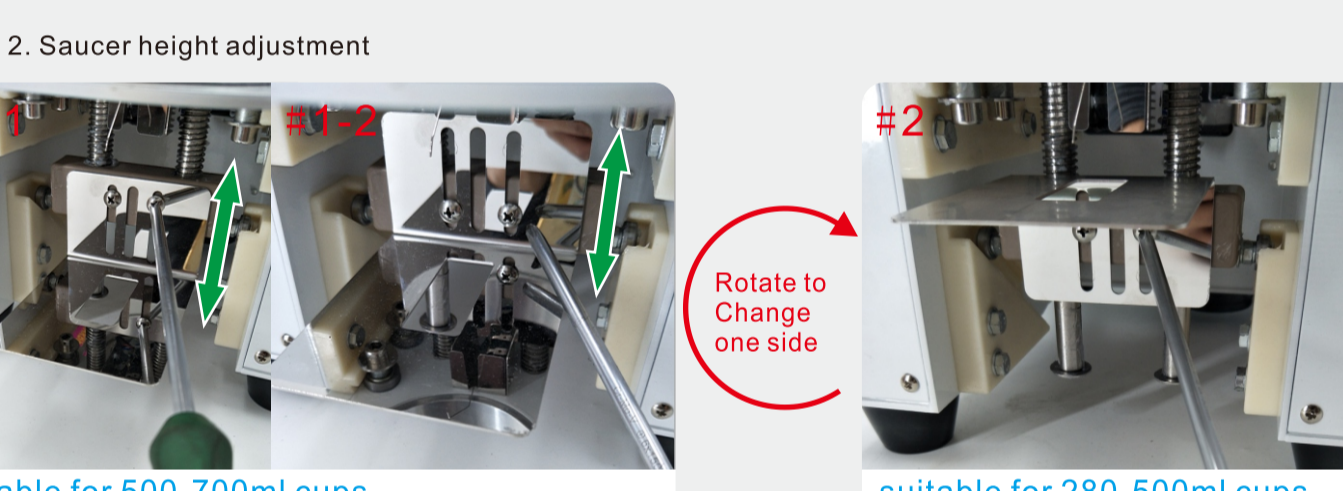


EN OPERATION STEPS

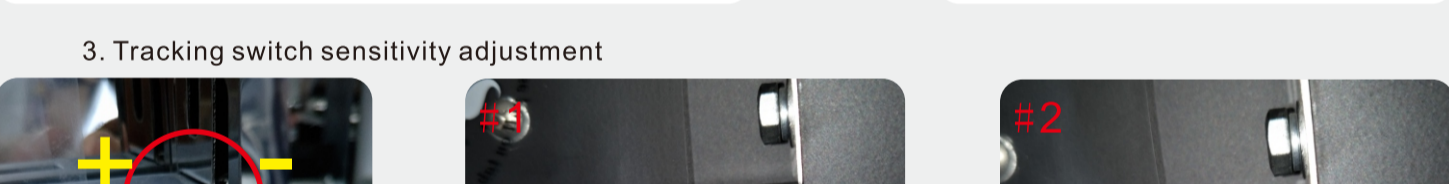
1. Install sealing film and check if it's correct. (Warm tips: sealing film must go across the tracking sensor.)
2. Plug in and turn on the machine, the cup pallet will slide out automatically, heating light will be on.
3. The first heating will be finished after about 2minutes, heating light will be off.
4. Press **AUTO/RESEAL/MANUAL** button, to select working mode: AUTO, MANUAL or RESEAL.
 - #1 Light on=AUTO mode, Light off=MANUAL mode, Long press this button(3S) to switch these two modes;
 - #2 Shot press this button to do once RESEAL operation(film do not move), Light flicker = RESEAL;
5. Put a filled cup into cup pallet(Warm tips: confirm the size of cup is consistent with the cup mold):
 - #1 the cup will enter to seal automatically in "AUTO" working mode;
 - #2 Press "**MANUAL START**" button, the cup will enter to seal in "MANUAL" working mode, but the film does not move during this operation.
 - #3 Press "**MANUAL START**" button, the cup will enter to seal in "RESEAL" working mode, but the film does not move during this operation.
6. The cup will slide out automatically after sealing completion, take away the sealed cup, end.

EN FILM AND SAUCER ADJUSTMENT

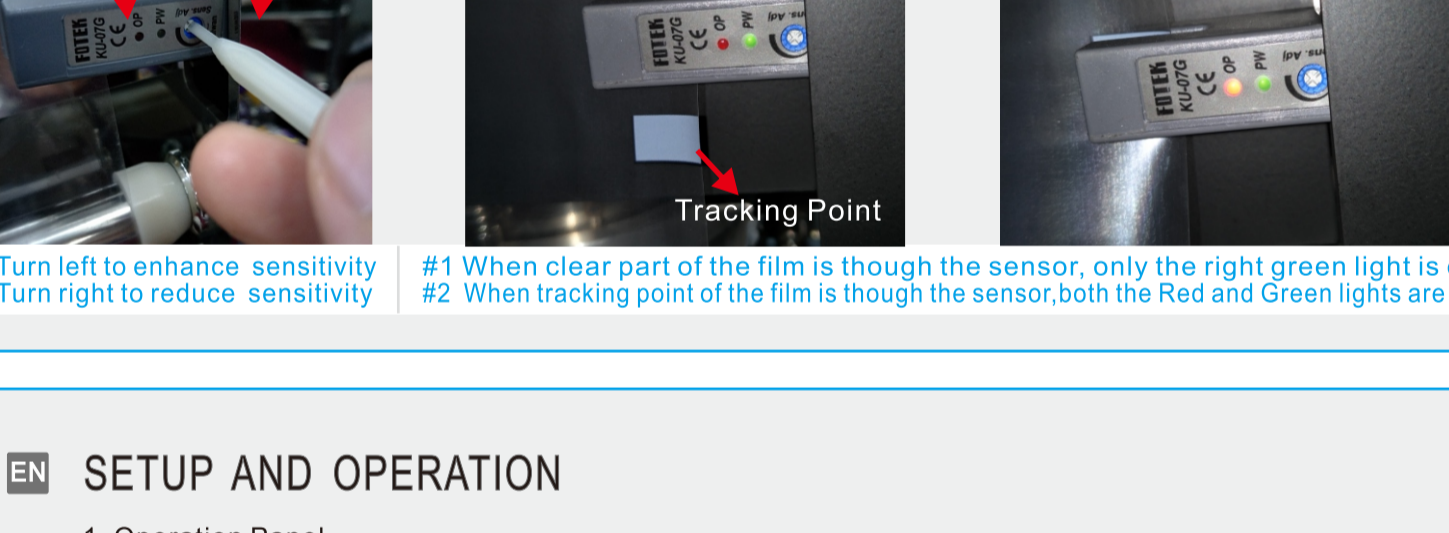
1. Sealed Film pattern center position adjustment



2. Saucer height adjustment



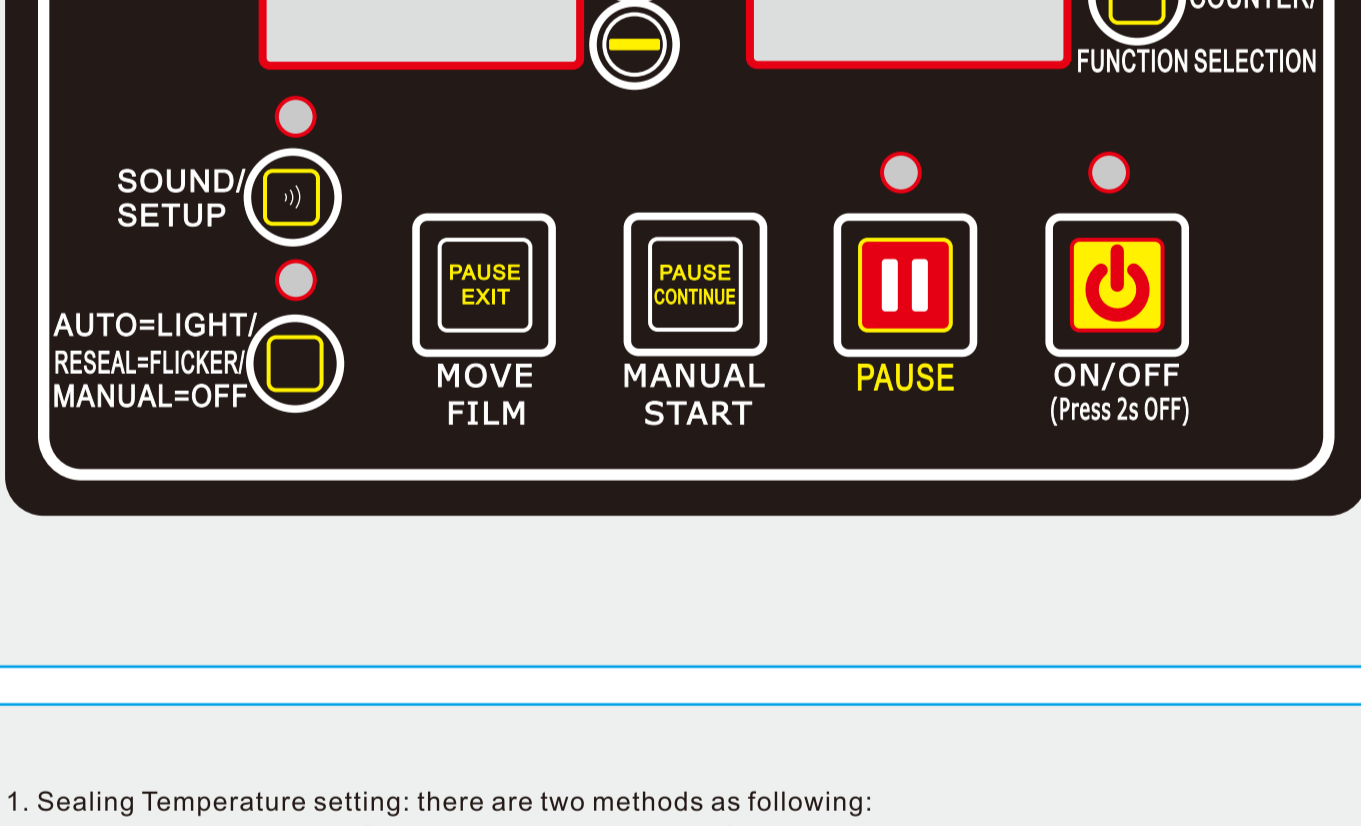
3. Tracking switch sensitivity adjustment



- Turn left to enhance sensitivity, Turn right to reduce sensitivity
- #1 When clear part of the film is though the sensor, only the right green light is on.
- #2 When tracking point of the film is though the sensor, both the Red and Green lights are on.

EN SETUP AND OPERATION

1. Operation Panel



1. Sealing Temperature setting: there are two methods as following:
 - #1. Quick setting: press **+** button to increase, press **-** button to reduce directly in work, the date will be saved automatically, the left screen will show set temperature date by interval flashing.
 - #2. Enter **P1** function to set, see details in the function descriptions as following.
2. Counter setting:
 - #1. Counter clear permission setting: **Allow** or **NOT allow** to clear sealed cups number, Enter **P2** function to set, see details in the function descriptions as following.
 - #2. If set as **Allow** to counter counter, Long press **COUNTER** button for 4Seconds, the current number will be cleared to **0000**. If set as **NOT allow** to clear counter, the counter will be hidden after long or shot press.
 - #3. Shot press **COUNTER** button 1 time, the counter will be hidden, it will reappear when shot press again.
3. Sealing time setting: Enter **P3** function to set, see details in the function descriptions as following.
4. Feeding cup time setting: Enter **P4** function to set, see details in the function description as following.
5. Do not use tracking sensor setting: Enter **P5** function to set, see details in the function description as following.
6. **PAUSE** operation: Press **PAUSE** button in work, the machine will stop immediately and **PAUSE** light will flash. Then we can do:
 - #1. **Cancel this cup sealing operation:** press **PAUSE** button, the cup pallet will slide out to cancel this operation;
 - #2. **Continue this cup sealing operation:** press **PAUSE** button, the machine will continue this sealing operation.

7. **RESEAL** operation: Shot press **RESEAL=FLICKER/MANUAL=OFF** button, the light will flash, then press **MANUAL START** button, the cup pallet will enter to seal one time, while the film does not move, this operation can be used for:
 - #1 Seal a sealed cup one more time, if this cup was not sealed well.
 - #2 Clean heating plate. (if melted film adhered to heating plate, put a piece of paper on cup pallet, do this reseal operation, then use bamboo sticker to take away this paper from heating plate, repeat these steps about 3-5times, can finish this reseal operation.)
 It will back to previous working mode after cleaned this reseal operation.
8. **Washing blade** operation: Put a wet sponge in the blade groove firstly, then Long press **PAUSE** button for 4Seconds, the cup pallet will slide inside then the blade will come down to cut and stay for 3Seconds, then go up, the blade will repeat down and up five times, then the cup pallet will slide out to finish this operation. If need to stop halfway, Press this **PAUSE** button again, will stop this operation and the cup pallet will slide out.

EN FUNCTIONS DESCRIPTIONS

- #1 **Enter to functions setup:** Plug in but don't turn on the machine, under this condition, Long press **SOUND/SETUP** button for 4Seconds, the left screen will show the preset sealing temperature, the right screen will show its function setting No. **P1**;
- #2 **Choose and set functions date:** Short Press **COUNTER** button to select setting's No. from **P1** to **P5**, the left screen will show its "setting date" accordingly. Press **+** or **-** key to adjust setting date, these adjustment will be saved automatically.
- #3 **Exit function setup:** Long press **SOUND/SETUP** button for 4Seconds, to EXIT setting, all the setting dates has been saved automatically.

	FUNCTIONS SETTING No. DESCRIPTION
P1	Sealing Temperature , from 100°C to 250°C, press "+" or "-" key to adjust. Sealing Temperature also can adjust directly during working time.
P2	Counter clear function Lock , can choose "open" or "close"; "ON"=open, allow to clear the counter; "OFF"=close, can't clear the counter.
P3	Sealing Time , from 1 to 50, 1=0.1S,50=5Seconds; Means when the heating part pressed the cup, it will keep a time to seal. This time is sealing time, can use this function to adjust.
P4	Feeding cup time , 1 to 30, 1=0.1S,30=3Seconds; Means when put a cup into the cup mould, it will slide into machine to seal after a delayed time. This time is Feeding cup time, we can use this function to adjust, refer to automatic style only.
P5	Film motor rolling time , from 000 to 099, 000=decided by Tracking switch, 001=0.1Seconds, 099=9.9Seconds; Means when the cup start to slide into seal, the sealing film motor will roll at the same time, to move the film a time, then start to seal and cut. This time is Film motor rolling time, we can use this function to adjust. Attention: this function is seldom used! Keep it on "000" normally , only when we use a tracking switch which is not transparent or has no tracking point, because the tracking switch can't track these kinds of sealing film, so we can use this function to set the rolling time.

EN ERROR ALARM REASONS AND SOLUTIONS

1. **E52 or E51:** Reason: The tracking sensor did not sense the black tracking point of the sealing film. Solution: #1 check if the sealing film crossed the tracking switch or not. #2 Adjust the dust covered with the tracking sensor. when the clear part of sealing film crossed the sensor, only the green light is on and the red light is off; when the black tracking point of sealing film is crossing the sensor, the red light will be on.
2. **E1, E2, E3, E4:** Reason #1: Motor controlling switch was not touched correctly which showed as following. Solution: Check the corresponding Error switch if it can be touched correctly in work. Reason #2: The switch is broken. Solution: Replace a new switch which can get from in the back of the machine.
3. Heating Temperature shows **1023**: Reason: Temperature sensor is loosen connection or broken. Solution: #1. Check the temperature sensor connection. #2. Change new temperature sensor. (the red terminal connect "+", The blue terminal connect "-".)

EN MAINTENANCE AND CLEANING

1. Unplug as not in use or cleanliness.
2. The appliance is easier to clean if you do so immediately after use.
3. Do not use abrasive cleaning agents, scourers, acetone, alcohol etc.
4. Do not clean any of the parts in a dishwasher.
5. Do not wash the top electrical part.
6. Apply oil into both sides of the sliding rail per month, ensure the cup pallet slide smoothly.

EN STERILIZATION

1. Filled a container with antiseptic liquid (add 15ml household bleach into 3.8L 10-21°C water. Let the cup pallet slide out then unplug, Use clean rags to wipe cup pallet with above liquid.