

casals



180mm Sander Polisher



COMPLIES WITH
INTERNATIONAL
IEC60745
SAFETY SPECIFICATIONS



1200W

2 YEAR
WARRANTY

Model:
SP1200

PLEASE READ ALL INSTRUCTIONS BEFORE USE

IMPORTANT:

Thank you for purchasing a Casals Sander Polisher Set (hereinafter referred to as the "power tool").

This manual will assist you in operating and maintaining your power tool. This manual is the latest version. With the continuous improvement and upgrading of this product, the manufacturer reserves the right to modify this manual without notice. The manufacturer shall assume no liability for incorrect information contained in this manual.

This manual is an integral part of the power tool. When the power tool is transferred to others, this manual should be handed over to the new owner.

Some important information in this manual will be indicated in the following way (please see below). The users should pay special attention to these instructions.

The range of CASALS POWER TOOLS is safe and reliable, but incorrect use of these products may cause personal injury and or damage to your machine. Please read this manual thoroughly before operation as this product is required to operate strictly in accordance with this manual.

IMPORTANT NOTICES:

WARNING: When using the power tool, basic safety precautions including the following safety instructions should always be followed to reduce the risk of fire, electric shock and personal injury. Read all these instructions before operating this product and retain these instructions for future reference.

1. GENERAL SAFETY PRECAUTIONS:

1.1. This power tool is not intended for use by persons (including children) with reduced physical, sensory or mental capabilities, or lack of experience and knowledge, unless they have been given supervision or instruction concerning use of the power tool by a person responsible for their safety.

1.2. The power tool may only be operated observing the regulations of the operation documentation and under permanent supervision.

1.3. Do not operate this product in an explosive atmosphere, such as in the presence of flammable liquids, gases or dust.

1.4. Keep children and bystanders away while operating the power tool. Distractions can cause you to lose control.

1.5. The power tool's plug must match the outlet. Never modify the plug in any way. Do not use any adapter plugs with earthed (grounded) power tools.

Unmodified plugs and matching outlets will reduce risk of electric shock

1.6. Avoid body contact with earthed or grounded surfaces such as tubes, radiators and refrigerators. There is an increased risk of electric shock if your body is earthed or grounded. (If applicable)

1.7. Do not expose the power tool to rain or wet conditions. Water entering the power tool will increase the risk of electric shock.

1.8. Do not modify or change the cord. Never use the cord for carrying, pulling or unplugging the power tool. Keep the cord away from heat, oil and sharp edges or moving parts. Damaged or entangled cords increase the risk of electric shock.

1.9. When operating this power tool outdoors, use an extension cord suitable for outdoor use. Use of a cord suitable for outdoor use reduces the risk of electric shock.

1.10. Stay alert. Watch what you are doing and use common sense when operating the power tool.

1.11. Do not operate the power tool when you are tired or under the influence of drugs, alcohol or medication.

1.12. Use safety equipment. Always wear eye protection. Safety equipment such as dust mask, non-skid safety shoes, hardhat, or hearing protection used for appropriate conditions will reduce personal injuries.

1.13. Remove any adjusting key or wrench before turning the power tool on. A wrench or a key left attached to a rotating part of the power tool may result in personal injury.

1.14. Do not over reach. Keep proper footing and balance at all times. This enables better control of the power tool in unexpected situations.

1.15. Dress properly. Do not wear loose clothing or jewellery; Keep your hair, clothing and gloves away from moving parts. Loose clothes, jewellery or long hair can be caught in moving parts.

1.16. Do not force the power tool.

1.17. Do not use the power tool if the switch does not turn it on and off. If the power tool cannot be controlled by the ON/OFF switch, disconnect from power source and send for service.

1.18. Disconnect the plug from the power source before making any adjustments, changing accessories, or storing the power tool. Such preventive safety measures reduce the risk of starting the power tool accidentally.

1.19. Store out of the reach of children and do not allow persons unfamiliar with the power tool or these instructions to operate the power tool. The power tool is dangerous in the hands of untrained users.

1.20. Use the power tool in accordance with these instructions and in the manner intended for the power tool, taking into account the working conditions and

the work to be performed.

1.21. Use of the power tool for operations different from intended could result in a hazardous situation.

1.22. Have your power tool serviced by a qualified repair person using only identical replacement parts. This will ensure that the safety of the power tool is maintained.

1.23. This machine is designed for sanding and polishing only.

1.24. This machine is not suitable for operations such as grinding, cutting, wire brush, etc.

1.25. Inspect the machine and the accessories before each use. Do not use accessories which are bent, cracked, or otherwise damaged. If the machine or one of the accessories is dropped, inspect the machine or the accessory for damage. If necessary, replace the accessory.

1.26. Let the machine run with no load for no less than 1 minute in a safe area after mounting the accessories. If the machine vibrates strongly, immediately switch off the machine, remove the plug from the mains, and try to solve the problem.

1.27. Ensure that the polisher disk is properly tightened before operating the machine. Check that the work-piece is properly supported or fixed.

1.28. Do not attempt to bring the polisher disk to a standstill with your hand.

1.29. Never put the power tool down until it has come to a complete stop and is switched off.

2. SAFETY STICKERS AND EXPLANATIONS:

A Class II or double insulated electrical appliance is one which has been designed in such a way that it does not require a safety connection to electrical earth. The basic requirement is that no single failure can result in dangerous voltage becoming exposed so that it might cause an electric shock and that this is achieved without relying on an earthed metal casing. This is usually achieved at least in part by having two layers of insulating material surrounding live parts or by using reinforced insulation



Risk of personal injury.



Risk of electric shock.



Immediately remove the mains plug from the mains if the mains cable becomes damaged and during cleaning and maintenance



Risk of flying objects. Keep bystanders away from the work area.



Wear ear and eye protection



Wear protective gloves

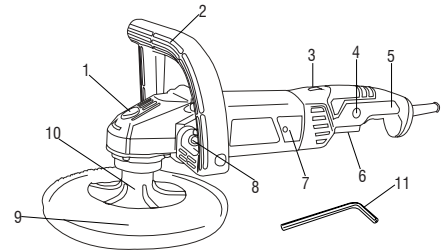


Do not press the spindle lock button while the motor is running.



Risk of fire.

3. COMPONENTS:



- 1 Spindle lock
- 2 D shape auxiliary handle
- 3 Speed control toggle
- 4 Triggler lock
- 5 Rotating rear handle
- 6 ON/OFF Trigger switch
- 7 Carbon brush cover
- 8 Allen screw
- 9 Woolen fabric cover
- 10 Polishing disk with velcro
- 11 Allen key

4. Use and care:

4.1. Before use:

Note: Although this discussion deals with polishing a car, your polisher is capable of polishing a wide array of flat surfaces such as hardwood floors, furniture, boats and other surfaces that could use an occasional shine.

4.1.1. Before you begin, make sure the car is clean and dry. The work area should be dry also. If necessary, remove road tar with a general cleaner before polishing. Also remove excess grease spots, bug stains, etc.

4.2. Assembly:

4.2.1. Lock the spindle by pushing in the spindle lock.

4.2.2. Place the polisher disk on the spindle, mounting the concave recess side of the locking nut over the spindle and tighten by turning the polisher disk clockwise (right). To tighten the turn anticlockwise (left).

4.2.3. Install the woolen fabric cover by simply stretching the string and slipping it over the outside of the polishing disk. Ensure that you have properly tightened the string.

4.2.4. The polishing disk is velcro and is only compatible with 180mm velcro sanding paper.

To use the sanding function you need to remove the woolen fabric cover and stick the velcro sanding disk to the polishing disk.

NB: Ensure that the sanding disk is properly aligned to the polishing disk to avoid damage to the polishing disk and the item you are sanding.

4.2.5. The "D" shaped auxiliary handle is supplied with 2 hex screws and a hex key. Place the "D" shaped auxiliary handle over the head of the polisher and align the holes to the holes on the sides of the polisher head. Insert the screws and tighten with the hex key.

NB: The auxiliary handle is designed for left or right handed uses.

4.3. Selecting the correct operating speed:

4.3.1: The work speed of the rotating part is controlled by the speed selector and is allocated at the top of the rotating rear handle.

4.3.2. Speed option ranges from 1 – 6 speeds selections. The higher the selection, the faster the rotating part spins.

4.3.3. Ensure that you use the correct speed for the job intended.

4.4. Rear rotating handle:

4.4.1. The rear handle is designed to rotate 90 degrees to the left and right. This enables the user to have a comfortable polishing position.

4.5. Operation:

4.5.1. To switch your polisher on, press the trigger on the rear handle.

4.5.2. To switch your polisher off, release the trigger on the rear handle.

4.5.3. ALWAYS START AND STOP THE POLISHER ON OR AGAINST THE SURFACE. Place the cord over your shoulder and do flat surfaces first - hood, trunk and roof. Cover areas quickly with broad, sweeping strokes in a criss-cross pattern.

4.5.4. DO NOT press down on the polisher. The machine's action, not pressure, does the best job.

4.5.5. After flat surfaces are covered with wax, do sides of the car. Let the cord hang free. It is not necessary to use a criss-cross motion on doors and fenders.

4.5.6. Put a clean polishing pad on the polisher.

4.5.7. Polish the wax. Use long, sweeping strokes in a criss-cross pattern. Do not press hard. Let the polisher do the work.

4.6. Handy hints:

4.6.1. For best results, use light pressure only, letting the polisher do the work.

4.6.2. Exercise caution around edges, corners or small surface areas. Prolonged polishing on edges and corners can damage these areas.

4.6.3. The wool fabric cover can be hand washed in warm water and mild detergent. Let it air dry. Do not machine wash or machine dry.

4.6.4. DO NOT USE ABRASIVE COMPOUNDS. Liquid wax is recommended to use with this polisher.

4.6.5. The wool fabric cover is only to be used for the final buff, do not use it to apply wax.

4.6.6. Do not use the polisher with the "D" shaped auxiliary handle as this can lead to instability and cause serious harm.

5. Cleaning and maintenance:

5.1. Always ensure that the machine is unplugged from the power source when carrying out any maintenance on it.

5.2. Regularly check that all the fixing screws are properly tightened.

5.3. Check for misalignment or binding of moving parts, breaking parts, and any other condition that may affect

the power tools operation.

5.4. If damaged, have the power tool serviced before using. Many accidents are caused by poorly maintained tools.

5.5. Only use accessories that are recommended by the manufacturer for this model. Accessories that may be suitable for one tool may become hazardous when used on another.

5.6. Only use mild soap and a damp cloth to clean the tool. Never let any liquid get inside the tool; never immerse any part of the tool into a liquid.

5.7. The brushes should be checked periodically and worn-out brushes should be replaced in time.

After replacing, inspect whether the new brushes can move freely in the brush holder. Keep running the motor for 15 minutes on no load.

5.8. Keep the vent passage clear from dirt, clean off the accumulated dust and oil dirt periodically

5.9. During normal operation, if anything happens, the power supply should be cut off at once and the tool should be checked and repaired

Technical Data

Input Power: 1200W

No-load speed: 800-4200/min

Diameter of Wheel: 180mm

casals

2 YEAR WARRANTY

Casals guarantees that this product has been thoroughly inspected and tested before being dispatched and is free from mechanical and electrical defects and complies with the applicable safety standards. However, should defects due to faulty material or workmanship develop, under normal domestic use, within 6 months from the date of purchase please return the product to the store from where it was purchased for a full refund or replacement.

The following conditions apply:

1. Please ensure you retain your receipt as this must be presented when making a claim under the terms of the warranty. It is impossible to determine the warranty period without proof of purchase, so please keep this in a safe place.
2. If a refund or exchange is required the product must be complete with all accessories, parts and packaging.
3. Missing parts will render the warranty void.
4. Upon receipt of your appliance check it for any transport damage to ensure it is safe for use. Return it to the store as soon as possible for exchange if damaged. The warranty is void if products are damaged after use, so please do not use the damaged product.
5. Your product is designed for normal domestic household use. Failure to read and comply with the instructions for use, cleaning and maintenance will render your warranty void, so please read these instructions carefully to ensure your safety, and get the most effective use from the product.
6. **Any abuse, negligent, improper use will render the warranty void and Creative Housewares (Pty) Ltd will not be liable for any loss or damage.**
7. This Guarantee will not apply if this tool is damaged by accident or from normal wear and tear.
8. Any attempted repair, or replacement of unauthorised parts will render the warranty void, so please contact an authorised service centre or agent for any service or repair requirements.
9. **Accessories such as bits, blades, sanding disc, cutting lines, etc are excluded from this guarantee.**
10. **Normal consumables parts, such as carbon brushes, bearings, chucks, cord assembly's, spark plugs, recoil pulleys and bump head assembly's are specifically excluded from this guarantee.**

Extended 24 Month Limited Warranty

Casals takes pride in their product quality and therefore offer an extended 24 month limited warranty from the original date of purchase to offer the consumer peace of mind on their purchase.

- Should defects due to faulty material or workmanship develop, under normal domestic use, within 24 months from the original date of purchase, please return the product to the store from where it was purchased for repair free of charge.
- Casals will however replace a product, if the cost of the repair is not commercially viable or if their ability to conduct repair effectively cannot be guaranteed.
- **NB:** The warranty on replaced products will be from the original date of purchase.
- All repairs carry a 3 month warranty even if this falls outside of the 2 year warranty period. Casals will attempt to conduct repairs within reasonable industry standards but cannot be held responsible or liable for any circumstances not under their control.

Before returning your product, check for the following:

1. Your household mains supply socket is working and switched on.
2. The mains supply circuit is not overloaded (White trip switch on your DB board is off).
3. You have read the trouble shooting guide in your Instructions for Use.
4. All accessories and parts are present.

If service or repair becomes necessary outside the guarantee period, this service is still available however all transport/postage, spares and labour costs will be paid by the consumer. All chargeable repairs will require the consumers' approval in writing once the quote is accepted. Once the go-ahead has been received Casals will undertake to conduct the repair within a reasonable time and maintain the condition of the product as received.

For any assistance, service, queries and complaints please contact our Customer Care on 086 111 5006 or e-mail help@creativehousewares.co.za.

Durban

35 Adrain Road, Windermere, Durban,
South Africa, 4001
Tel: +27 31 303 3465
Fax: +27 31 303 8259

Cape Town

20 Tekstiel Street, Parow, Cape Town,
7493, South Africa • P.O. Box 6156 Parow
East, 7501, South Africa Tel: +27 21 931
8117
Fax: +27 21 931 4058

Johannesburg

Unit 25 & 26 San Croy Office park
Die Agora Road, Croydon, 1619
Tel: +27 11 392 5652
Fax: +27 11 392 1694

Be on the look-out for these Casals products at your local outlet:



CS480RE



CS1200RE



IDR600REA



ID710REA



RHD1050



MFS180



BS76-710



OS150



PL82-710



HAG2000A



AG115-500



AG115-710



AG230-710



SP1200



JS55A



DBS900



MFS400



R1200RE



CS184L



creative housewares

🏠 20 Tekstiel Street, Parow, Cape Town, 7493, South Africa

📧 P.O. Box 6156 Parow East, 7501, South Africa

☎️ +27 21 931 8117 📠 +27 21 931 4058

Service Centre Helpline: 086 111 5006

🌐 www.creativehousewares.co.za