

## WARNING:

1. For pets only.
2. Do not leave pet in stroller unattended.
3. Always apply the brake whenever the stroller is stationary.
4. The maximum weight capacity is 33lbs.

## Cleaning and maintenance:

1. Unsnap button on stroller;
2. Take apart the canopy;
3. Take out the cushion;
4. Wipe stroller slightly.

## Executive standard:

This pet stroller meets "PTSM-09726-NA" standard.

## Quality certificate:

This manufacturer has passed ISO9001:2015 certificate.

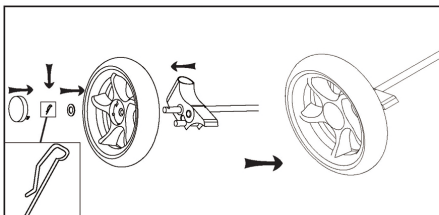
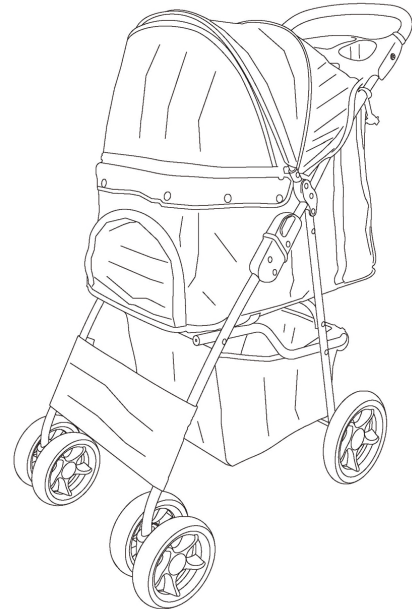
MADE IN CHINA

**PAWS & PALS**  
just for them

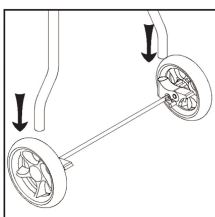
**PAWS & PALS**  
just for them

# Pet Stroller PTST-02

## Instruction Manual

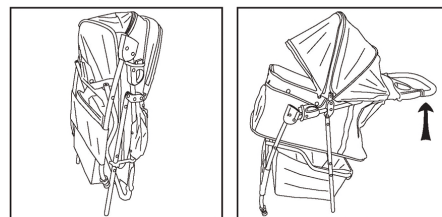


**3.** Insert each rear wheel onto the axle first, attach the gasket and insert clip pin through the hole on the axle as picture shown and then cover the wheel cap.

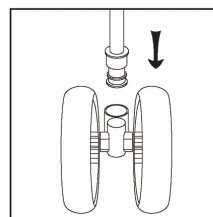


**4.** Now attach the rear wheels on the rear legs and hear the "click" to secure.

## Open and Assemble:



**1.** Release the red locking latch, unfold the stroller upwards and make sure both locks nap into place.

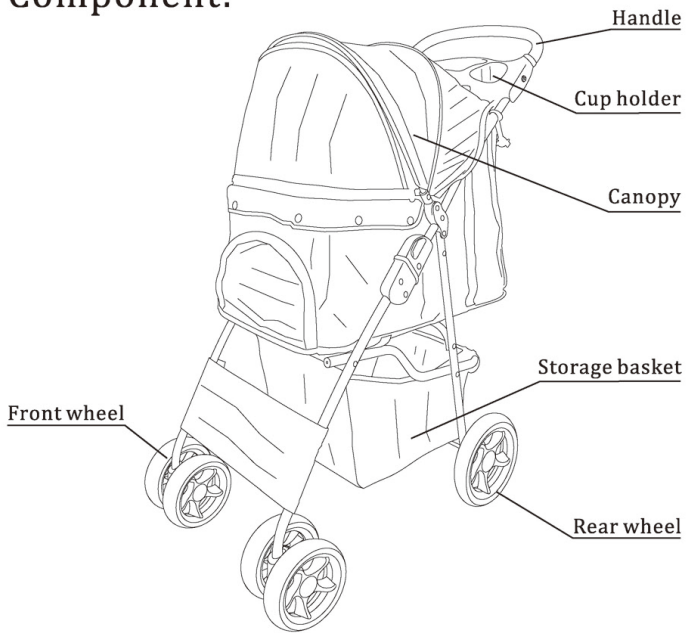


**2.** To install the front wheel, insert wheel onto the leg until a "click" is heard.

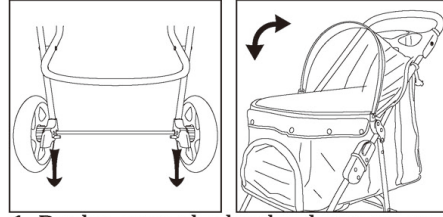
## Warning:

Please make sure the stroller assemble correctly according to installation manual.

## Component:

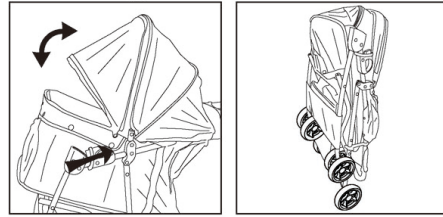


## Function:



1. Brake: step the brake down to stop the stroller.
2. Canopy: open and fold canopy as picture shown.

## Folding:



1. Unzip the canopy mesh.
2. Pull up the both side joints connection and push the stroller downwards to fold the stroller.
3. Fasten the folding hook.